

Figure S1. Knockdown of WBSCR22 enhances the proliferation and invasion of BXPC-3 cells. (A) Proliferation assay of the BXPC-3 cells expressing shWBSCR22 and shCtrl. The data were analyzed using a two-way ANOVA, followed by Bonferroni corrections. (B) Transwell assays of the BXPC-3 cells expressing shWBSCR22 and shCtrl. The data were analyzed using a two-tailed, unpaired t-test. P-values are indicated. The data are presented as the mean value \pm standard deviation; n=3 biologically independent repeats. WBSCR22, Williams-Beuren syndrome chromosomal region 22; sh, small hairpin.

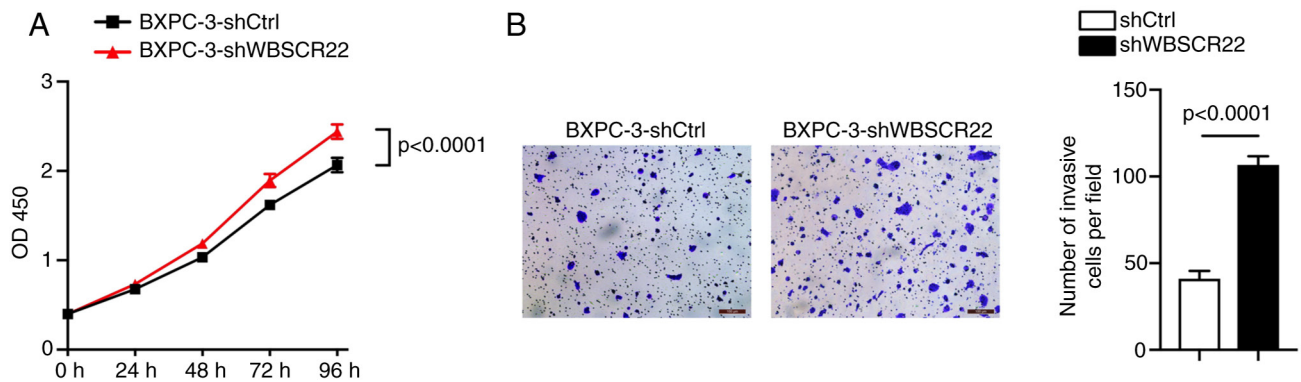


Figure S2. ISG15 overexpression partially rescues the tumor-inhibiting capacity of WBSCR22-OE + TRMT112-OE cells. (A and B) ISG15 overexpression rescued the inhibition of cell (A) proliferation and (B) invasion caused by synergistically over-expressed WBSCR22 and TRMT112. The data are presented as the mean value \pm standard deviation; $n=3$ biologically independent repeats. The data in A were analyzed using a two-way ANOVA, followed by Bonferroni corrections. The data in B were analyzed using a two-tailed, unpaired t-test. P-values are indicated. ISG15, interferon-stimulated gene 15; WBSCR22, Williams-Beuren syndrome chromosomal region 22; OE, overexpression; TRMT112, tRNA methyltransferase activator subunit 11-2.

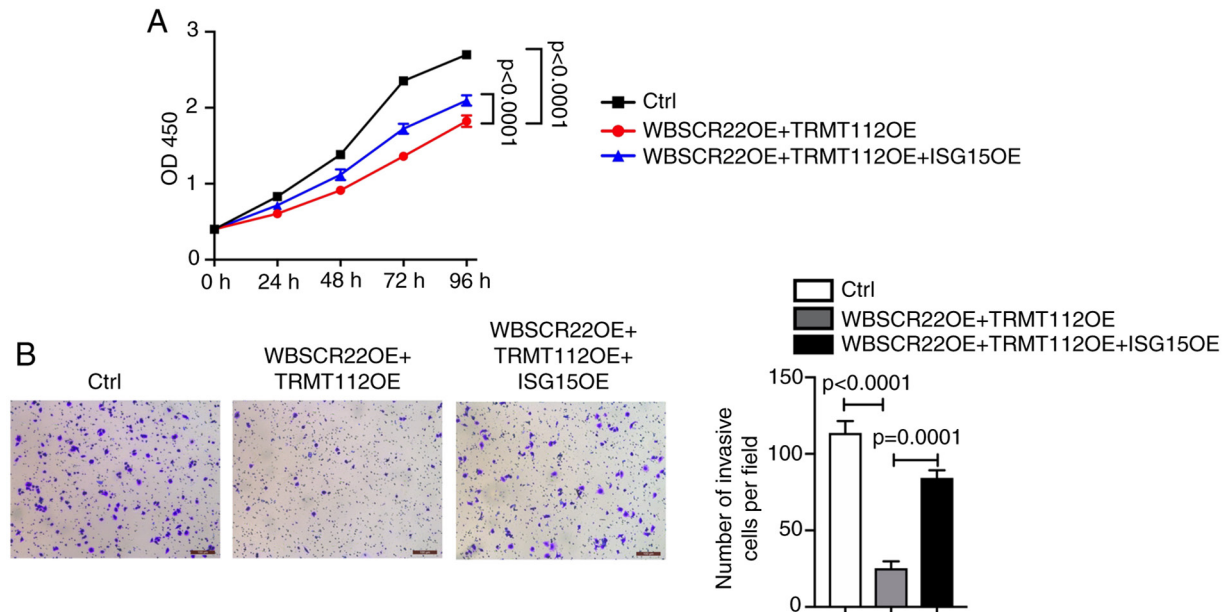


Table SI. STR authentication of cell lines.

Cells	D5S818	D13S317	D7S820	D16S539	vWA	TH01	AM	TPOX	CSF1PO
HPDE6	10,12	11,12	9,10	11,13	14,17	9,3	X, X	8,10	11,12
PANC-1	11,13	11,11	8,10	11,11	15,15	7,8	X, X	8,11	10,12
AsPC-1	12,12	9,12	12,13	11,11	17,17	7,9,3	X, X	8,10	10,13
BxPC-3	12,12	11,11	10,13	9,11	14,18	9,9	X, X	8,8	13,13

All cell lines used in the present study have been previously authenticated, stored and confirmed at the beginning of the current study by RADIL [Research Animal Diagnostic Laboratory (Columbia, USA)/Chinese Academy of Sciences (CAS), China] by species-specific PCR evaluation.