

Figure S1. Levels of YAP expression are associated with migration and invasion of CRC cells. (A) The migrated cells of Caco-2, LoVo, Colo-205, and DLD-1 were measured in Falcon cell culture inserts. Representative images of migration assay of Caco-2, LoVo, Colo-205, and DLD-1 cells. Magnification, x20. Scale bar, 50 μ m. (B) The migrated cells of Caco-2, LoVo, Colo-205, and DLD-1 were measured in Falcon cell culture inserts with Matrigel. Representative images of invasion assay of Caco-2, LoVo, Colo-205, and DLD-1 cells. Magnification, x20. Scale bar, 50 μ m. YAP, yes-associated protein; CRC, colorectal cancer.

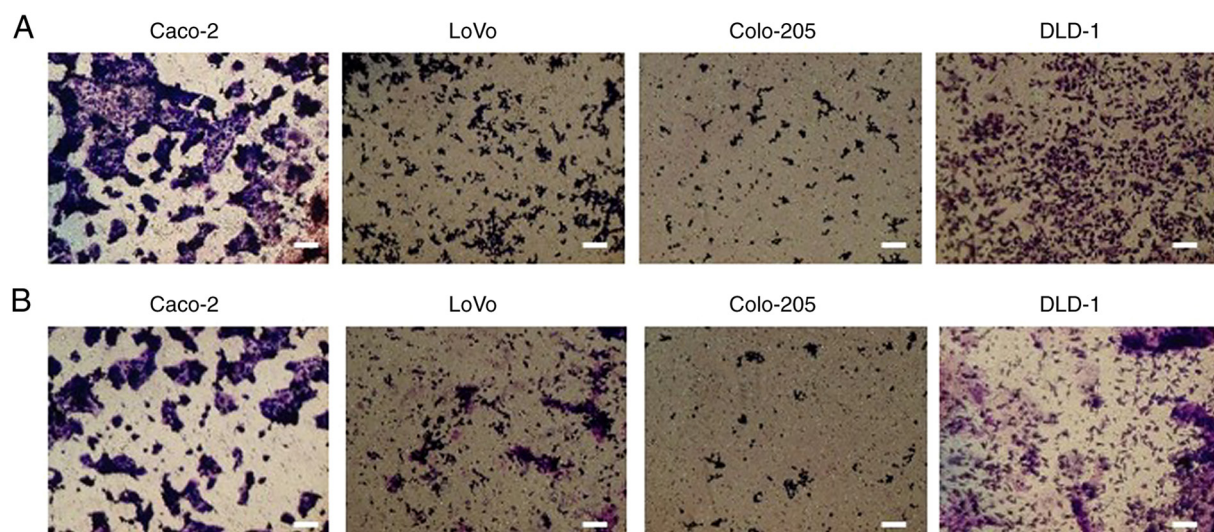


Figure S2. YAP siRNA decreases migration and invasion of DLD-1 cells. (A) DLD-1 cells were treated with YAP siRNA (10 and 20 nM), and the migrated cells were measured in Falcon cell culture inserts. Representative images of migration assay of DLD-1 cells. Magnification, x20. Scale bar, 50 μ m. (B) DLD-1 cells were treated with YAP siRNA (10 and 20 nM), and the migrated cells were measured in Falcon cell culture inserts with Matrigel. Representative images of invasion assay of DLD-1 cells. Magnification, x20. Scale bar, 50 μ m. YAP, yes-associated protein; siRNA, small interfering RNA.

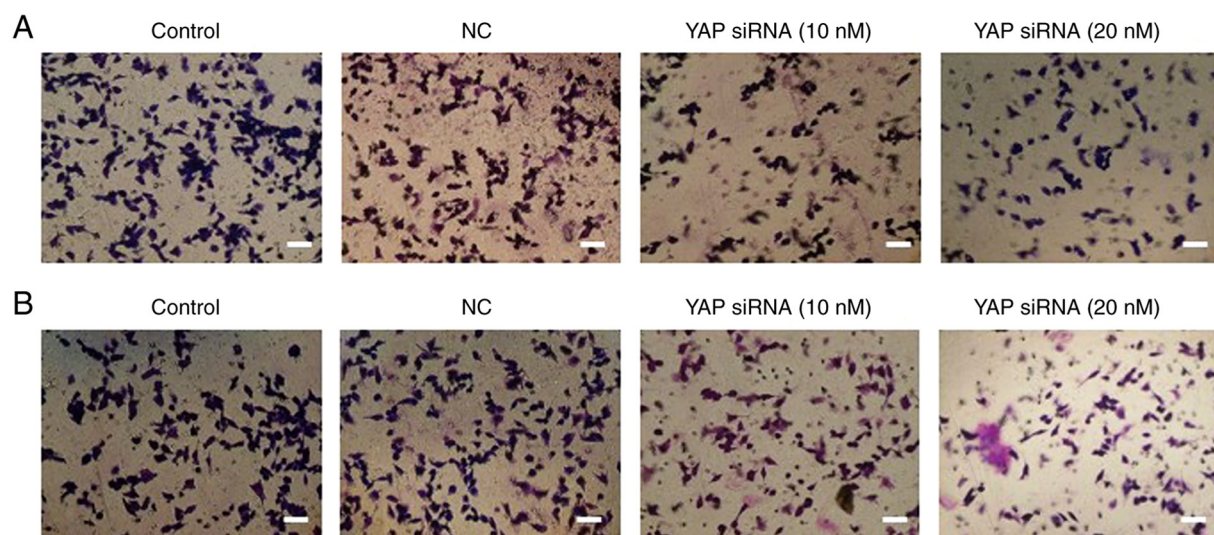


Figure S3. LY294002 decreases migration and invasion of DLD-1 cells. (A) DLD-1 cells were treated with LY294002 (1 and 5 μ M), and the migrated cells were measured in Falcon cell culture inserts. Representative images of migration assay of DLD-1 cells. Magnification, x20. Scale bar, 50 μ m. (B) DLD-1 cells were treated with LY294002 (1 and 5 μ M), and the migrated cells were measured in Falcon cell culture inserts with Matrigel. Representative images of invasion assay of DLD-1 cells. Magnification, x20. Scale bar, 50 μ m.

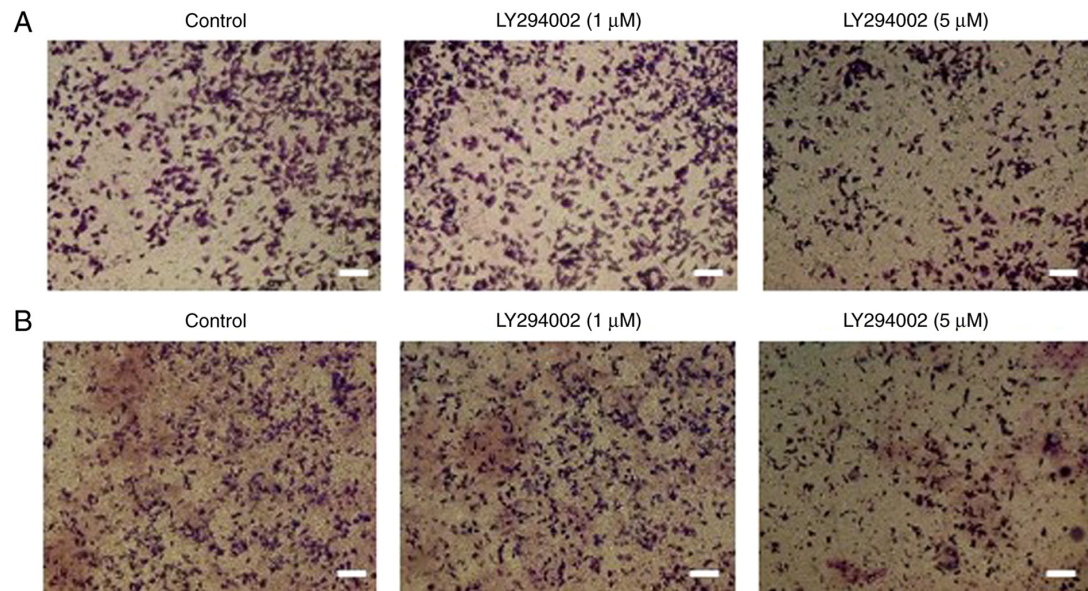


Figure S4. Verteporfin decreases migration and invasion of DLD-1 cells. (A) DLD-1 cells were treated with verteporfin (10, 50, and 100 nM), and the migrated cells were measured in Falcon cell culture inserts. Representative images of migration assay of DLD-1 cells. Magnification, x20. Scale bar, 50 μ m. (B) DLD-1 cells were treated with verteporfin (10, 50, and 100 nM), and the migrated cells were measured in Falcon cell culture inserts with Matrigel. Representative images of invasion assay of DLD-1 cells. Magnification, x20. Scale bar, 50 μ m.

