

Figure S1. BCECF-AM in each group was examined using flow cytometry. The different pH ranged from 6.4 to 7.8 (displayed above each histogram). The abscissa represents the green channel; the ordinate represents the emission wavelength, which is positively correlated with the fluorescence intensity. BCECF-AM, 2,7-bis-(2-carboxyethyl)-5-(and-6)-carboxyfluorescein, acetoxymethyl ester.

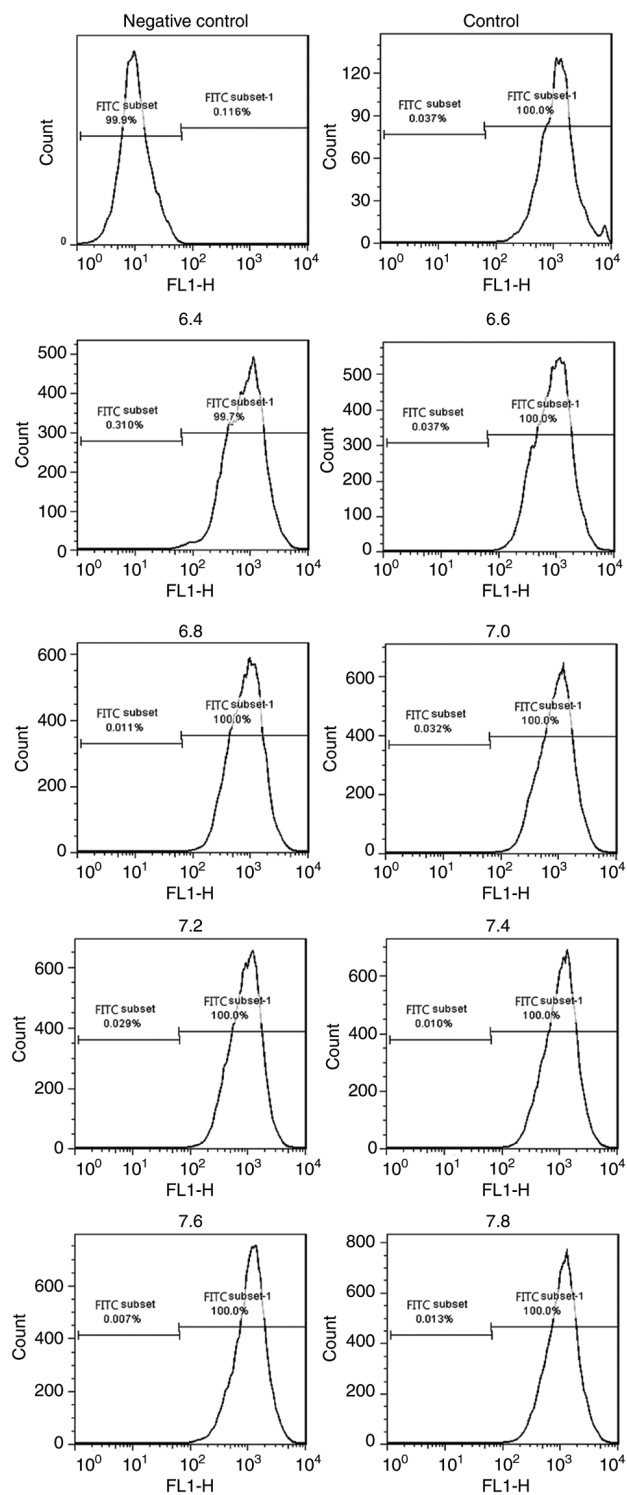


Table SI. Sequences of RNA primers (human species).

Gene	Primer sequences (5'→3')
VEGFA	F: TTAAACGAACGTACTTGCAGATG R: GAGAGATCTGGTTCCCGAAA
ANG1	F: GTGCTGGGTCTGGGTCTGAC R: GGCCTTGATGCTGCGCTTG
CD31	F: CAACGAGAAAATGTCAGA R: GGAGCCTTCCGTTCTAGAGT
GAPDH	F: CGGAGTCAACGGATTTGGTTCGTAT R: AGCCTTCTCCATGGTGGTGAAGAC

F, forward; R, reverse; ANG1, angiopoietin 1.