

Figure S1. *TMPRSS2* expression in different pathological tumor stages. Relative expression values ( $\Delta Ct$ ) of *TMPRSS2* gene expression in regards to tumor stage and histology. Please note that higher values represent a lower gene expression. *TMPRSS2*, transmembrane serine protease 2.

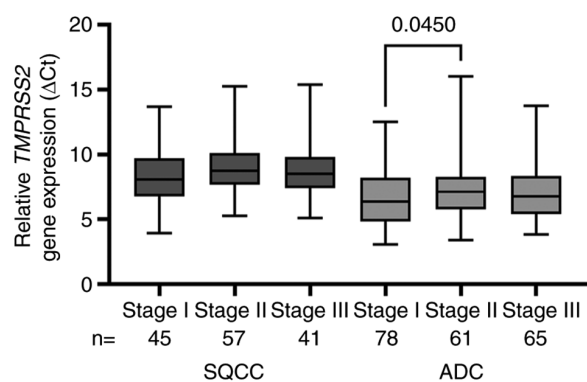


Figure S2. TMPRSS2 and AAT IHC correlation analyses. Scorings of TMPRSS2 and AAT were correlated in ADC (A) and SQCC (B). TMPRSS2, transmembrane serine protease 2; AAT, alpha-1-antitrypsin; IHC, immunohistochemistry; ADC, adenocarcinoma; SQCC, squamous cell carcinoma.

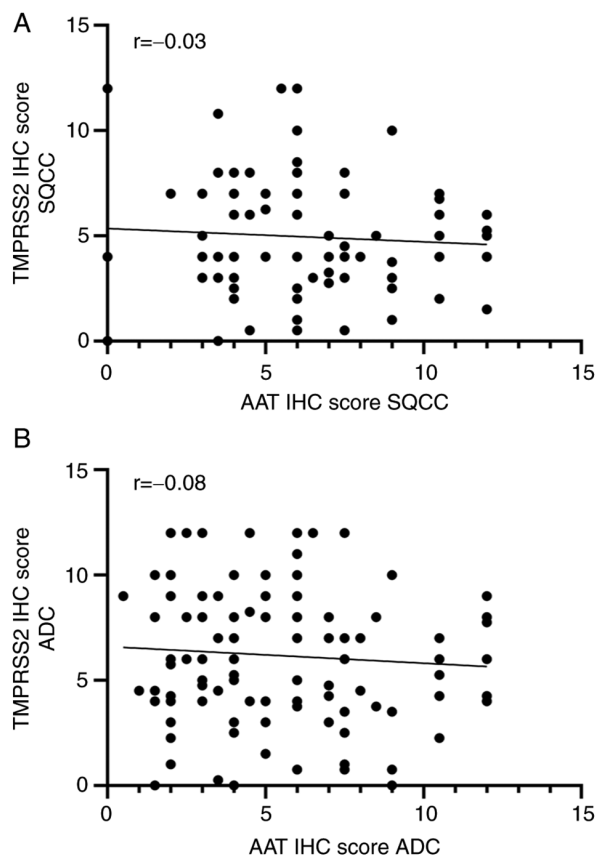


Figure S3. Densitometric analyses of TMPRSS2 cleaved fragment expression. Frames indicate the counted areas. \*Empty frames were set as reference area and subtracted. TMPRSS2, transmembrane serine protease 2.

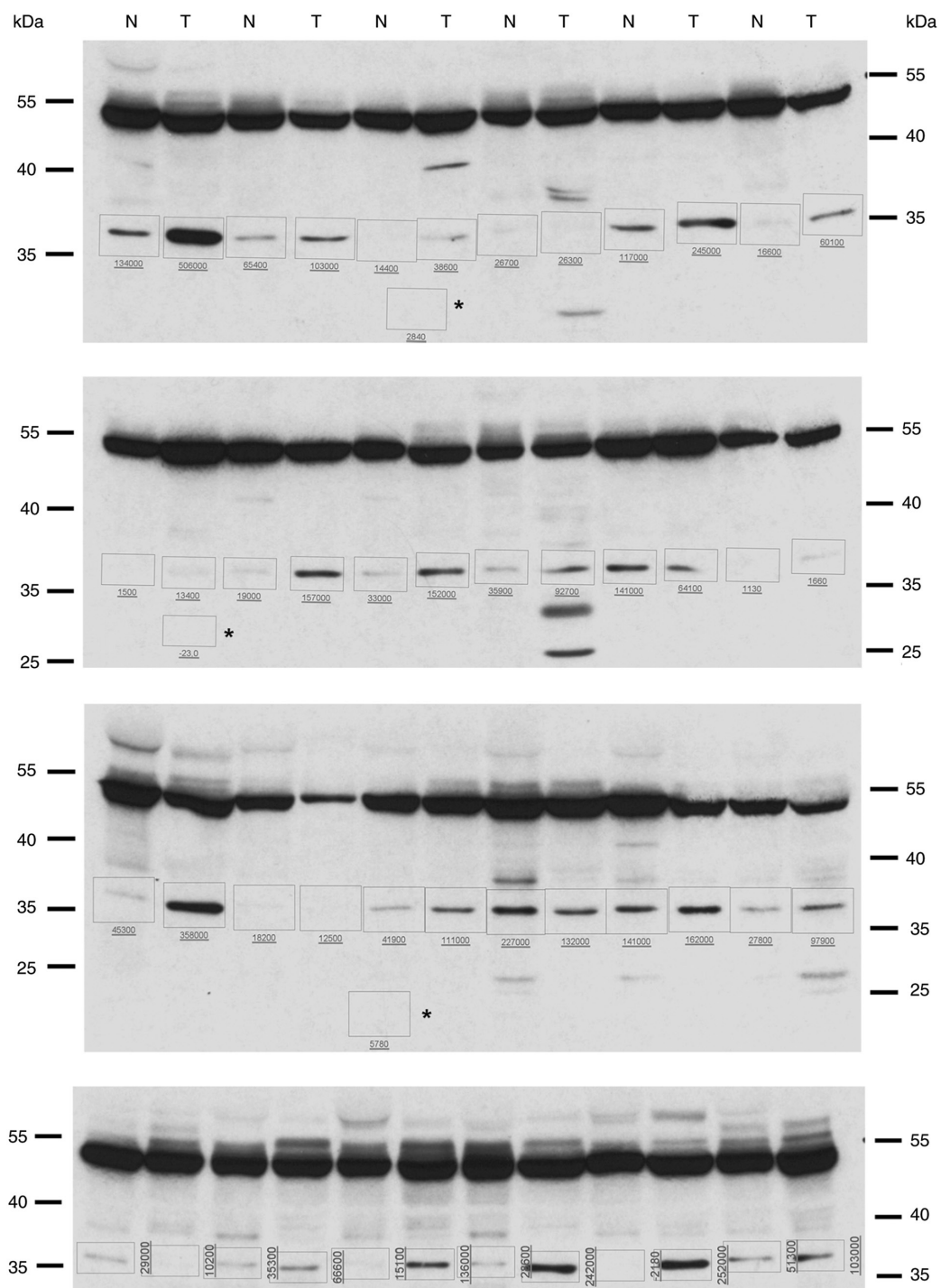


Figure S4. Densitometric analyses of TMPRSS2 full-length protein expression. Frames indicate the counted areas. \*Empty frame was set as reference area and subtracted. TMPRSS2, transmembrane serine protease 2.

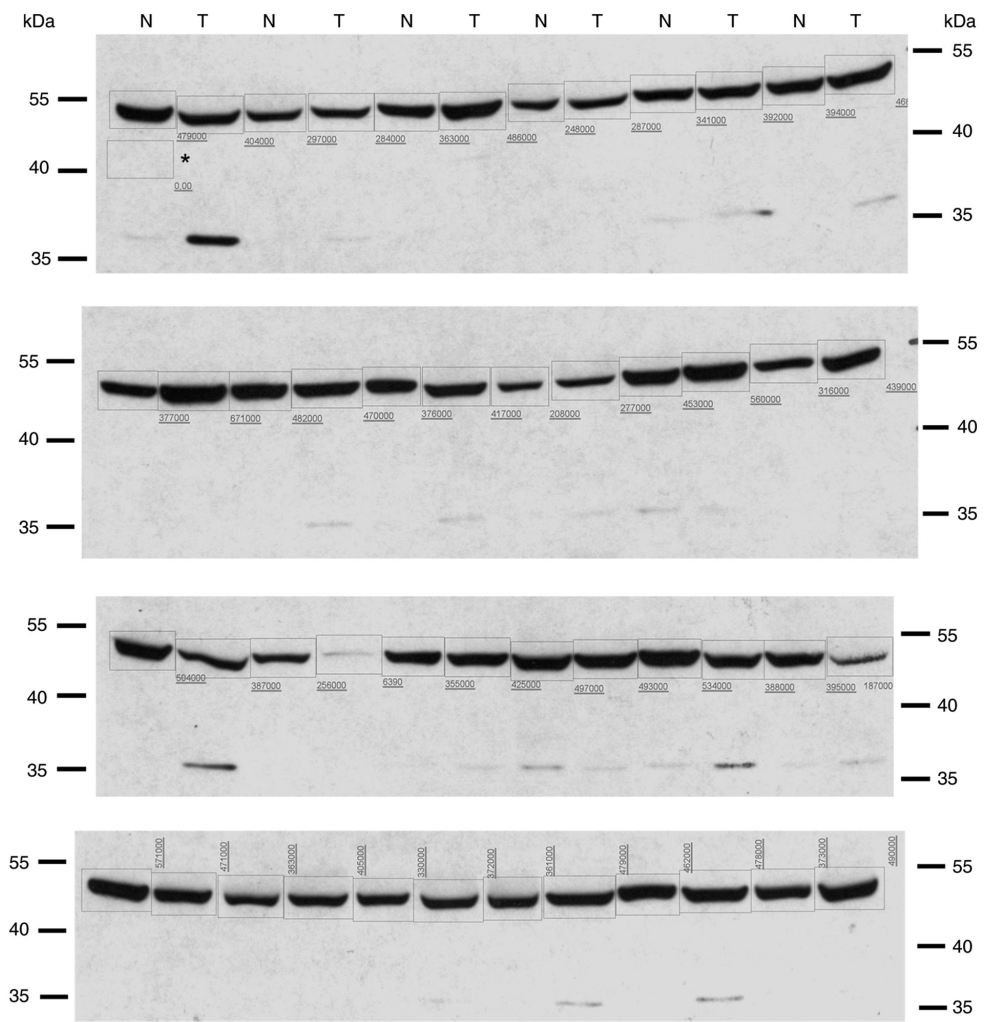


Figure S5. Densitometric analyses of AAT expression. Frames indicate the counted areas. \*Empty frame was set as reference area and subtracted. AAT, alpha-1-antitrypsin.

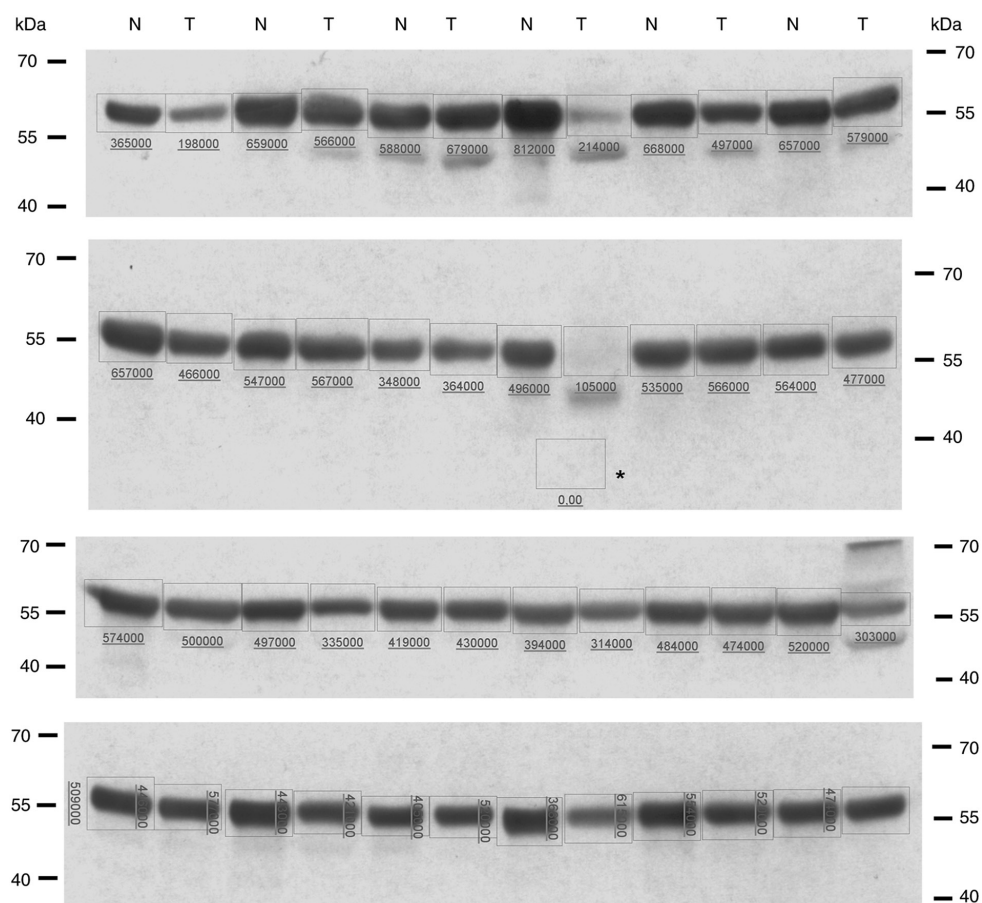


Figure S6. Densitometric analyses of  $\beta$ -actin expression. Frames indicate the counted areas. \*Empty frames were set as reference area and subtracted.

