

Figure S1. Toxic effects of spermine treatment alone on macrophages. (A) CCK-8, (B and C) the protein level of GSDMD and cleaved-caspase-1. GSDMD, gasdermin D; NS, no statistical significance. * $P < 0.05$, *** $P < 0.001$ vs. 24 h; # $P < 0.05$, ### $P < 0.001$ vs. 48 h.

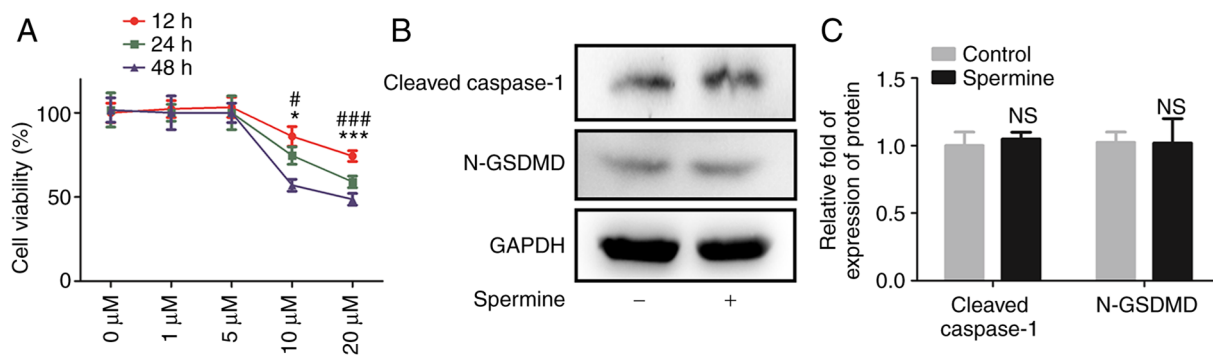


Figure S2. The mRNA level of caspase-1 and GSDMD. (A) Caspase-1, (B) GSDMD. GSDMD, gasdermin D; HG, high glucose; ox-LDL, oxidized low-density lipoprotein; NS, no statistical significance.

