

Figure S1. Correlation analysis of SPC25 and genes associated with ECM-integrin interactions based on the TCGA data. Correlation of SPC25 with (A) LAMA1, (B) LAMA3, (C) LAMA4 and (D) LAMA4 is shown. SPC25, spindle pole body component 25 homolog; ECM, extracellular matrix; TCGA, The Cancer Genome Atlas; LAMA1, laminin subunit $\alpha 1$; LAMA3, laminin subunit $\alpha 3$; LAMA4, laminin subunit $\alpha 4$; LAMC3, laminin subunit $\gamma 3$.

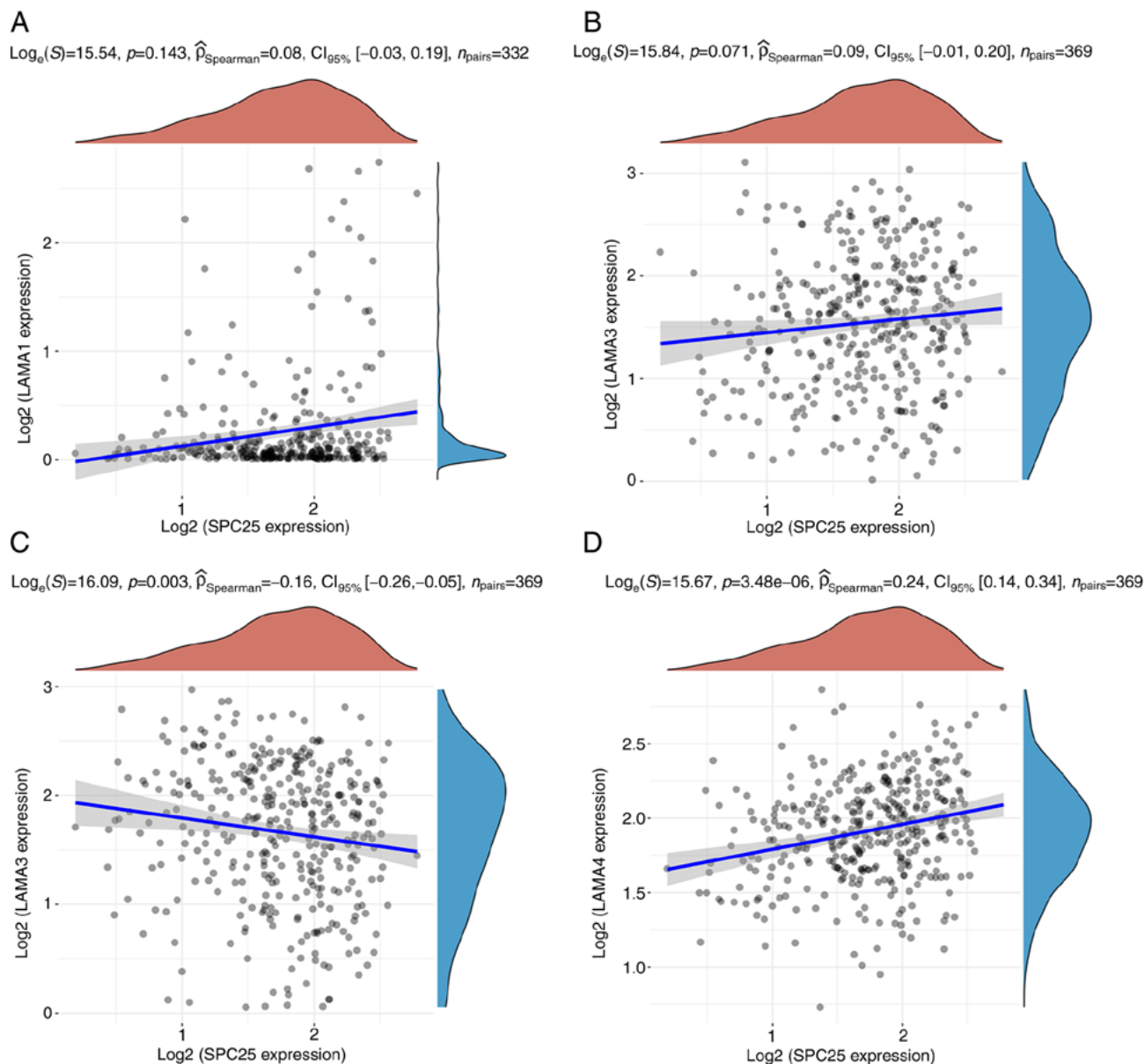


Figure S2. The ratios of phosphorylated versus total protein based on the results of Fig. 7A and B. (A) The ratios of phosphorylated versus total protein (PI3K, FAK and AKT) after SPC25 or ITGB4 silencing in Huh7 and HCCLM3 cells (independent-samples T test). (B) The ratios of phosphorylated versus total protein (PI3K, FAK and AKT) of the rescue experiment on proteins associated with the FAK-PI3K/AKT signaling pathway (one-way ANOVA). * $P < 0.05$, ** $P < 0.01$. SPC25, spindle pole body component 25 homolog; FAK, focal adhesion kinase; PI3K, phosphoinositide 3-kinase.

