

Figure S1. Gene Ontology analysis of proteins simultaneously expressed in T-AMEVs and B-AMEVs. (A) Biological process analysis. (B) Cellular component analysis. (C) Molecular function analysis. T-AMEV, tissue adenomyosis-derived extracellular vesicle; B-AMEV, blood adenomyosis-derived extracellular vesicle. Blue bars show background gene count, and the orange bars show  $-\log_{10}$  of false discovery rate.

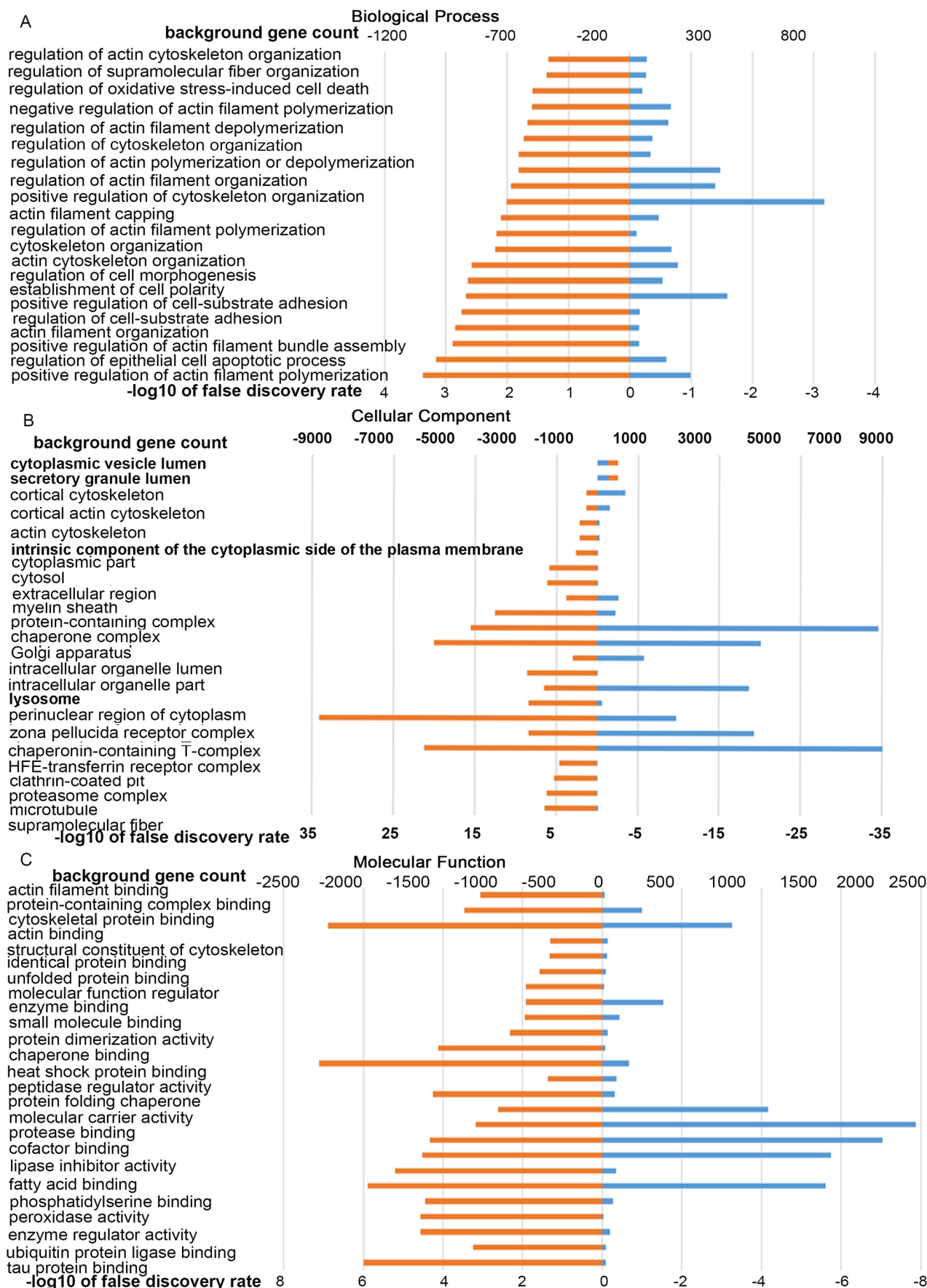
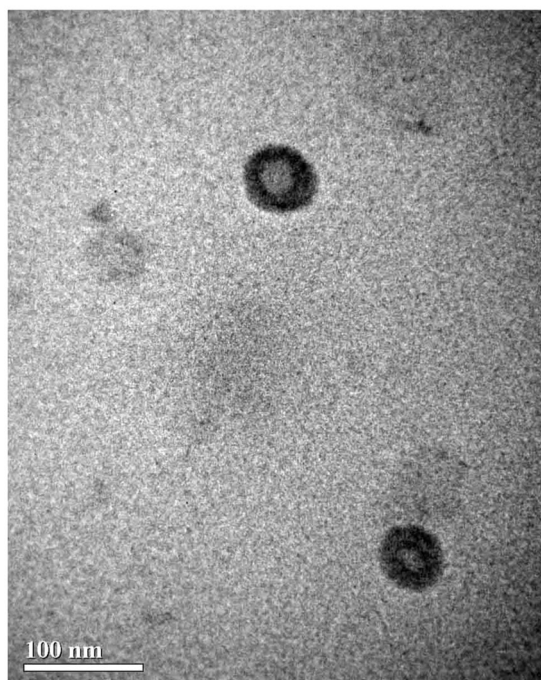


Figure S2. Characterization of serum extracellular vesicles in women without adenomyosis or endometriosis (d, diameter; nm, nanometre). (A) Transmission electron microscopy images with negative staining. (B) Nanoparticle tracking analysis of serum extracellular vesicles from women without adenomyosis/endometriosis.

A



B

