

Data S1. Live time-lapse video for 3D cultures of M1102 ovarian epithelial cells overexpressing PAX2 and tagged with GFP. Single and dissociated cells of M1102-PAX2 were plated

in 3D cultures and subsequently rearranged and elongated to form vascular-like channels within 48 h incubation. PAX2, paired box 2.

Figure S1. Western blotting and densitometric analysis. Results demonstrate high expression of PAX2 in M1102-PAX2 (M1102 with PAX2 overexpression) compared with M1102, M1102-WPI (parental cells infected with empty viral vector) and M1102-PAX2-AdCre (M1102-PAX2 cells in which PAX2 was knocked out). PAX2, paired box 2.

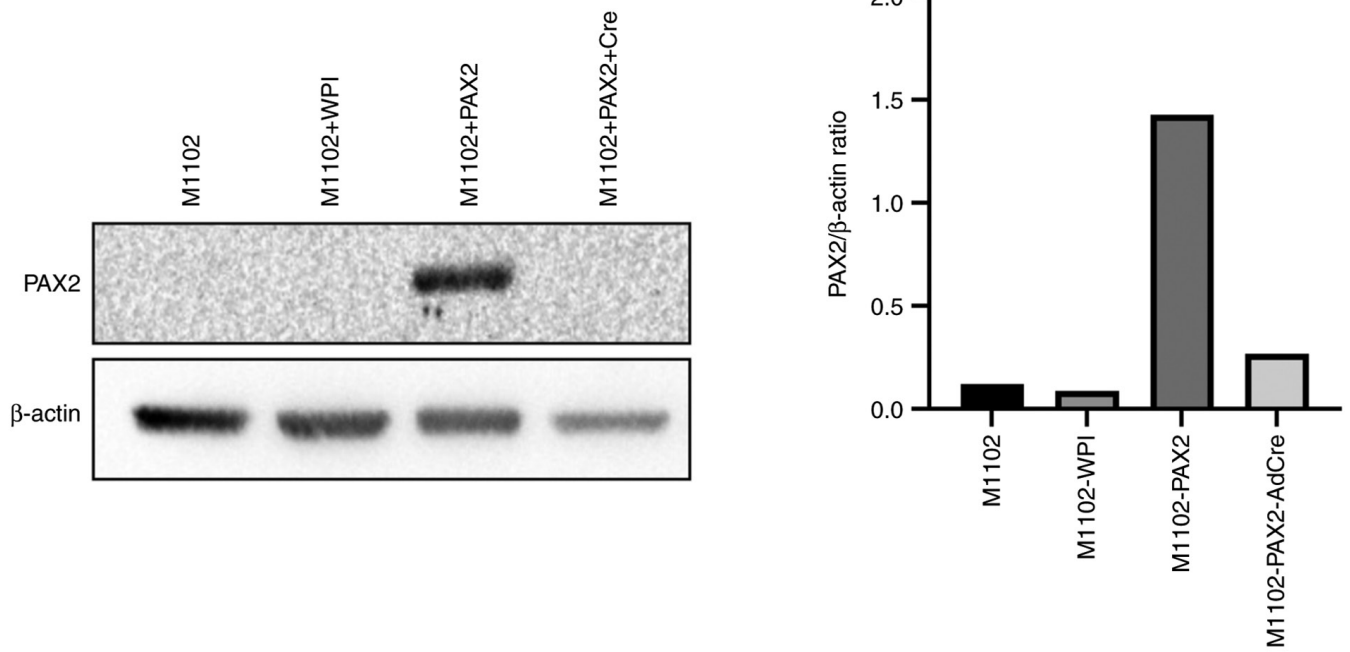


Figure S2. Human serous ovarian cancer tissue sections showed tubule-like structures lined with cells expressing PAX2 and basement membrane stained with PAS. Red arrow, vessels positive for CD31 and PAS, indicating regular angiogenesis; black arrow, CD31-negative blood vessels, indicating vasculogenesis and VM. Scale bar, 200 (original) and 50 μ m (magnified). PAX2, paired box 2; PAS, periodic acid-Schiff.

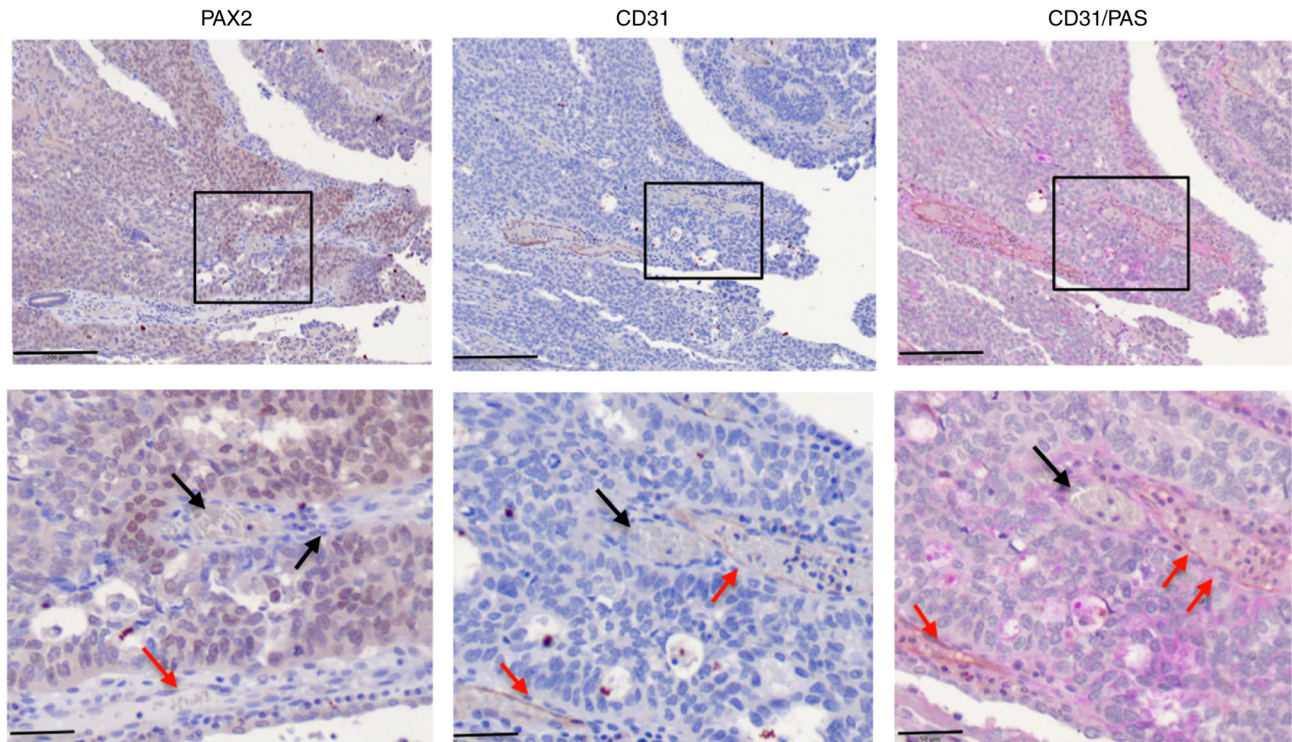


Figure S3. PAX2 and CD31 immunohistochemistry and PAS staining for the detection of blood vessels in human endometrioid ovarian cancer tissue. Red arrow, vessels positive for CD31 and PAS; black arrow, CD31-negative vessels. Scale bar, 200 μ m. PAS, periodic acid-Schiff; PAX2, paired box 2.

