

Figure S1. Cellular glycolytic activity of Hep2G and Huh7 cells. Hep2G and Huh7 cells were either treated with solvent (Ctrl), bb at IC_{50} ($0.6 \mu M$), bb at two-fold IC_{50} ($1.2 \mu M$) or vs at two-fold IC_{50} ($4.0 \mu M$). Quantification of western blot results for GLUT2 expression in (A) Hep2G and (B) Huh7 cells. Corresponding representative western blotting images are shown in Fig. S2C-F. (C-F) Estimation of glycolytic activity. Estimation of glucose in the cell culture supernatant of (C) HepG2 and (D) Huh7 cells following 24 h of treatment. Estimation of lactate in the cell culture supernatant of (E) HepG2 and (F) Huh7 cells following 24 h of treatment. Values were normalized to cell number. $n=3$ per group. One-way ANOVA with Tukey's post hoc test was used to test for significance. bb, broxham; vs, vorinostat; ctrl, control; GLUT, glucose transporter. * $P<0.05$ and ** $P<0.01$ vs. ctrl.

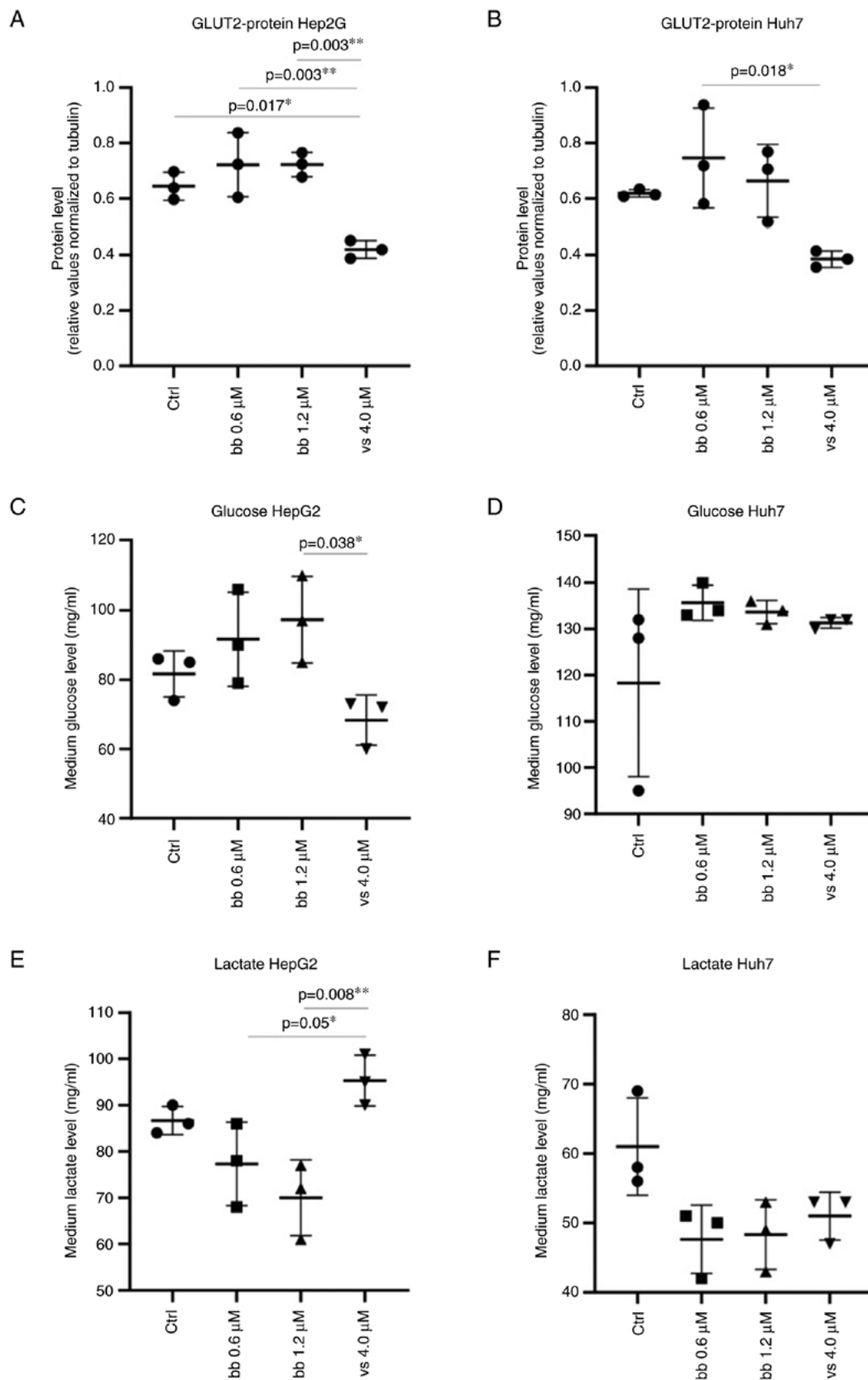


Figure S2. Representative images of the western blots in the present study. (A) Representative p53 and tubulin western blotting images of Hep2G and Huh7 cells for Fig. 5C and D. (B) Representative p-p53 and tubulin western blotting of Hep2G and Huh7 cells Fig. 5E and F. (C) Representative HDAC1 and tubulin western blotting images of Hep2G and Huh7 cells for Fig. 7A and B. (D) Representative HDAC2 and tubulin western blotting images of Hep2G and Huh7 cells for Fig. 7C and D. (E) Representative HDAC4 and tubulin western blotting images of Hep2G and Huh7 cells for Fig. 7E and F. For the detection of HDAC2 (55-60 kDa) and HDAC4 (140 kDa), the membranes were cut horizontally since their molecular weights are highly distinct. Therefore, HDAC2 and HDAC4 shared the same tubulin loading control in (D) and (E). (F) Representative HDAC6 and tubulin western blotting images of Hep2G and Huh7 cells for Fig. 7G and H. For the detection of p53 (53 kDa) and HDAC6 (160 kDa), the membranes were cut horizontally as molecular weights are highly distinct. Therefore, p53 and HDAC6 shared the same tubulin loading control in (A) and (F). (G) Representative HDAC6 and tubulin western blotting images of Huh7 cells after HDAC6 knock-down for Fig. 8D. (H) Representative GLUT2 and tubulin western blotting images of Hep2G and Huh7 cells for Fig. S1. Ctrl, control; bb, broxbam; ac, animacroxam; vs, vorinostat; p-, phosphorylated; HDAC, histone deacetylase; siRNA, small interfering RNA; GLUT, glucose transporter.

