

Figure S1. Quantitative analysis for the protein expression of PDCD4 and TRIM27 in endometrial cancer cell lines (Ishikawa and HEC-1-A) and ovarian cancer cell lines (A2780 and SKOV3) detected by western blotting. (A and B) The quantitative analysis for the protein expression of (A) PDCD4 and (B) TRIM27 in Ishikawa, HEC-1-A, A2780 and SKOV3 cells. PDCD4, programmed cell death 4; TRIM27, tripartite motif-containing 27.

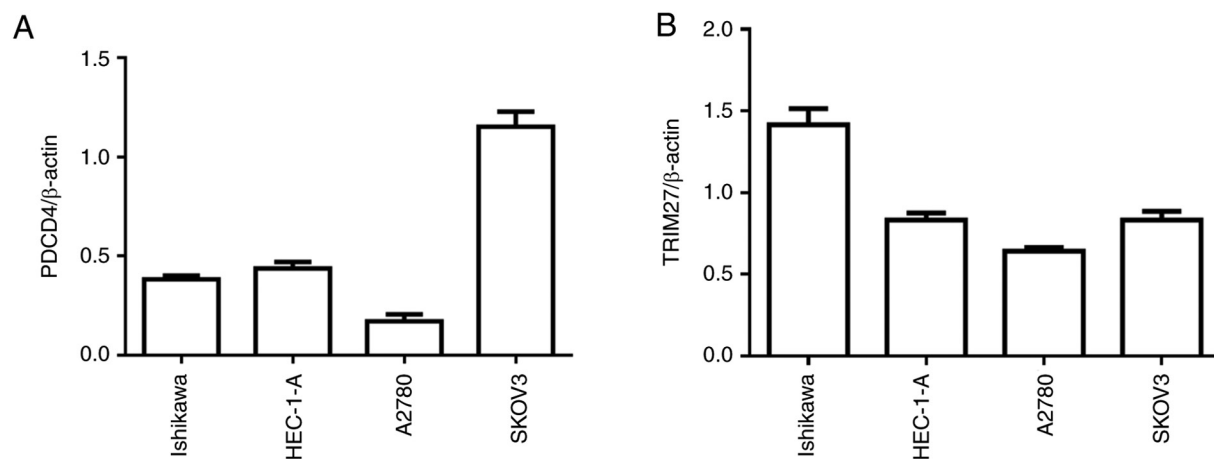


Figure S2. Protein expression of PDCD4 and TRIM27 detected by immunohistochemistry in the tumors from a xenograft nude mouse model of ovarian cancer (magnification, x200). (A and B) The protein expression of (A) PDCD4 and (B) TRIM27 in the group of shControl. (C and D) The protein expression of (C) PDCD4 and (D) TRIM27 in the group of shTRIM27. PDCD4, programmed cell death 4; TRIM27, tripartite motif-containing 27; sh-, short hairpin.

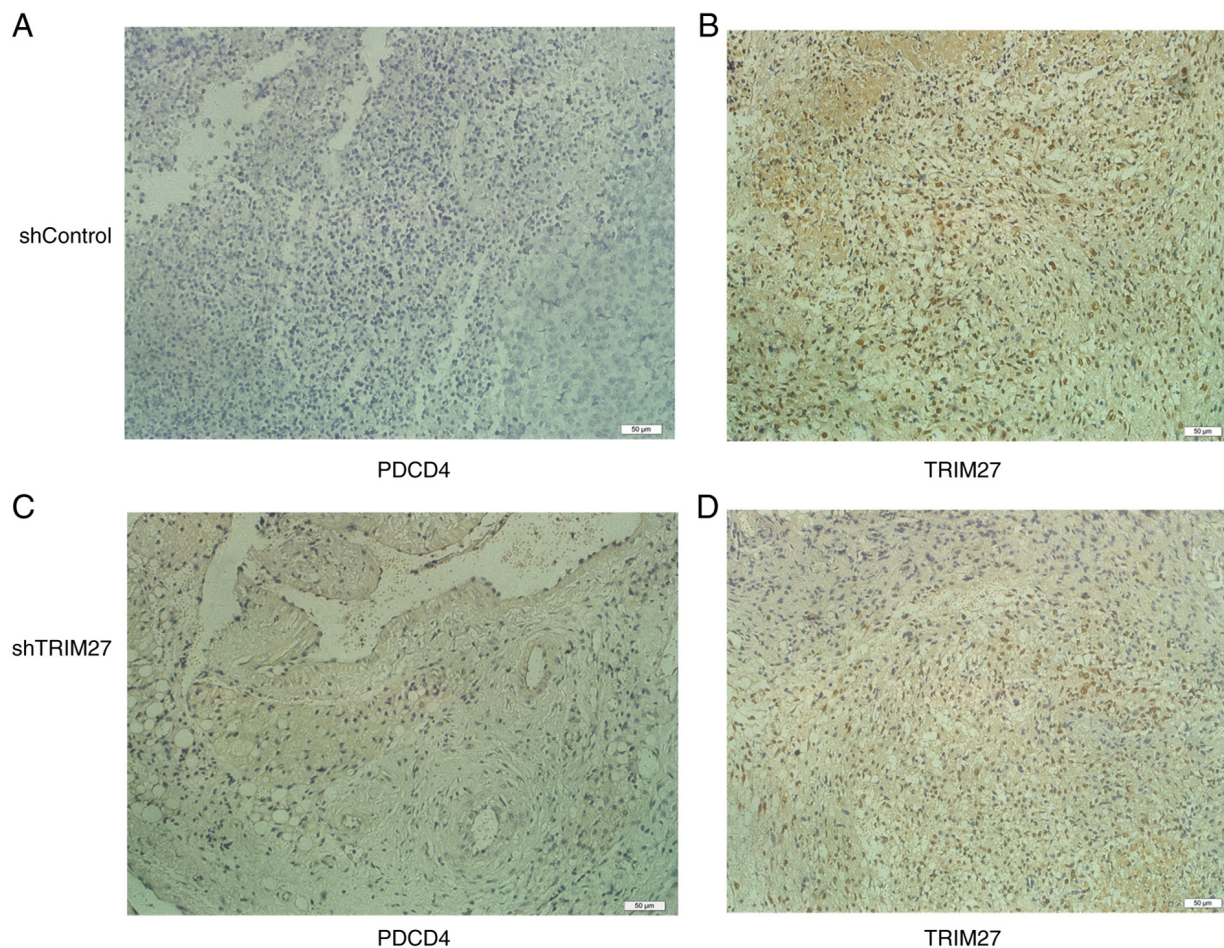


Figure S3. Quantitative analysis for the protein expression of PDCD4 and TRIM27 detected by western blot analysis after TRIM27 knockdown/overexpression and CHX treatment. (A and B) The quantitative analysis for (A) PDCD4 and (B) TRIM27 protein expression after TRIM27 knockdown and CHX treatment in A2780 cells. (C and D) The quantitative analysis for (C) PDCD4 and (D) TRIM27 protein expression after TRIM27 overexpression and CHX treatment in Ishikawa cells. \* $P < 0.05$ , \*\* $P < 0.01$ , \*\*\* $P < 0.001$  and \*\*\*\* $P < 0.0001$ . PDCD4, programmed cell death 4; TRIM27, tripartite motif-containing 27; CHX, cycloheximide; si-, small interfering; ns, no significance.

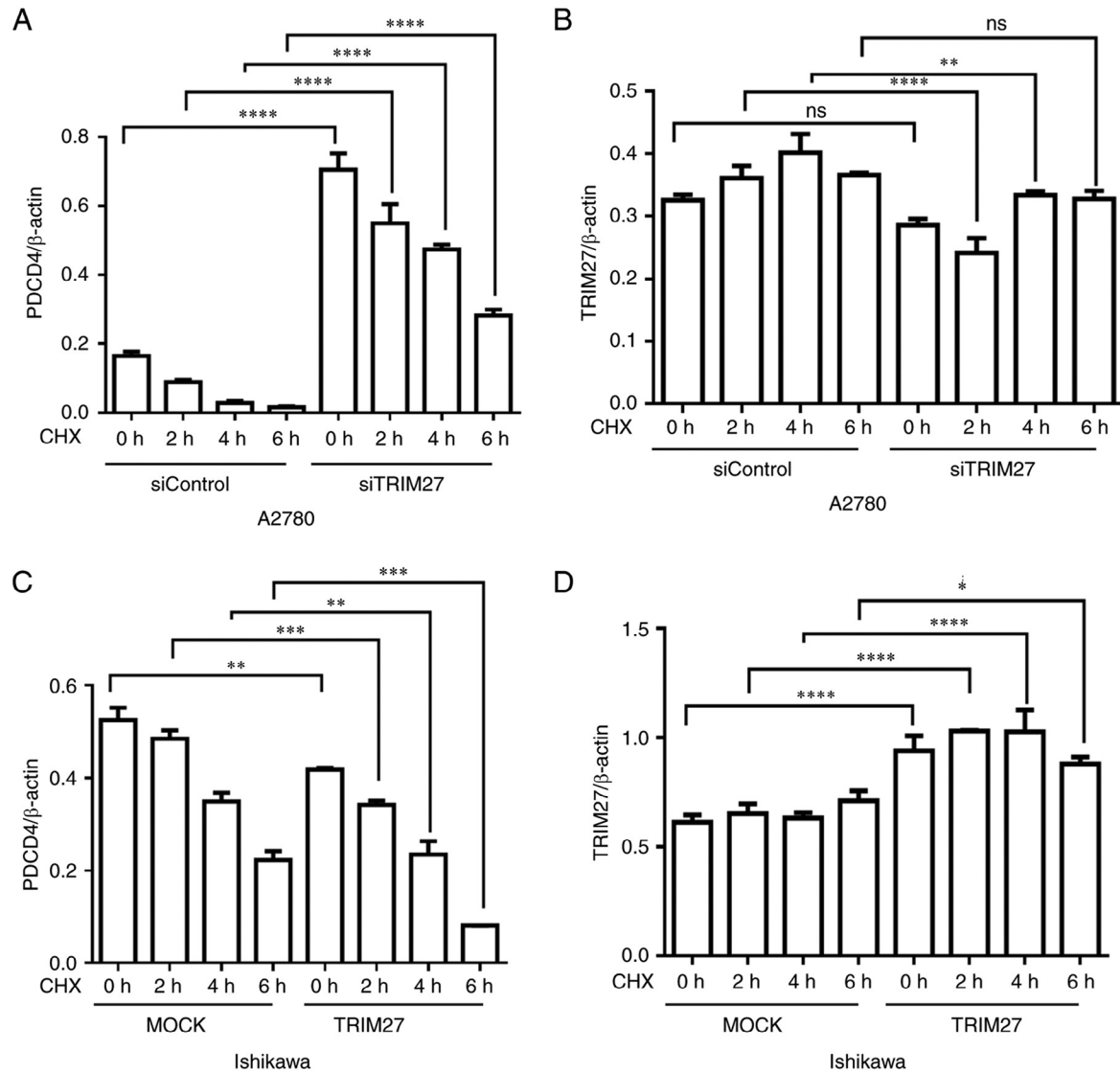


Figure S4. Quantitative analysis for the protein expression of PDCD4 and TRIM27 detected by western blotting after TRIM27 knockdown/overexpression and MG132 treatment. (A and B) The quantitative analysis for (A) PDCD4 and (B) TRIM27 protein expression after TRIM27 knockdown and MG132 treatment in A2780 cells. (C and D) The quantitative analysis for (C) PDCD4 and (B) TRIM27 protein expression after TRIM27 overexpression and MG132 treatment in Ishikawa cells. \* $P < 0.05$ , \*\* $P < 0.01$ , \*\*\* $P < 0.001$  and \*\*\*\* $P < 0.0001$ . PDCD4, programmed cell death 4; TRIM27, tripartite motif-containing 27; si-, small interfering; ns, no significance.

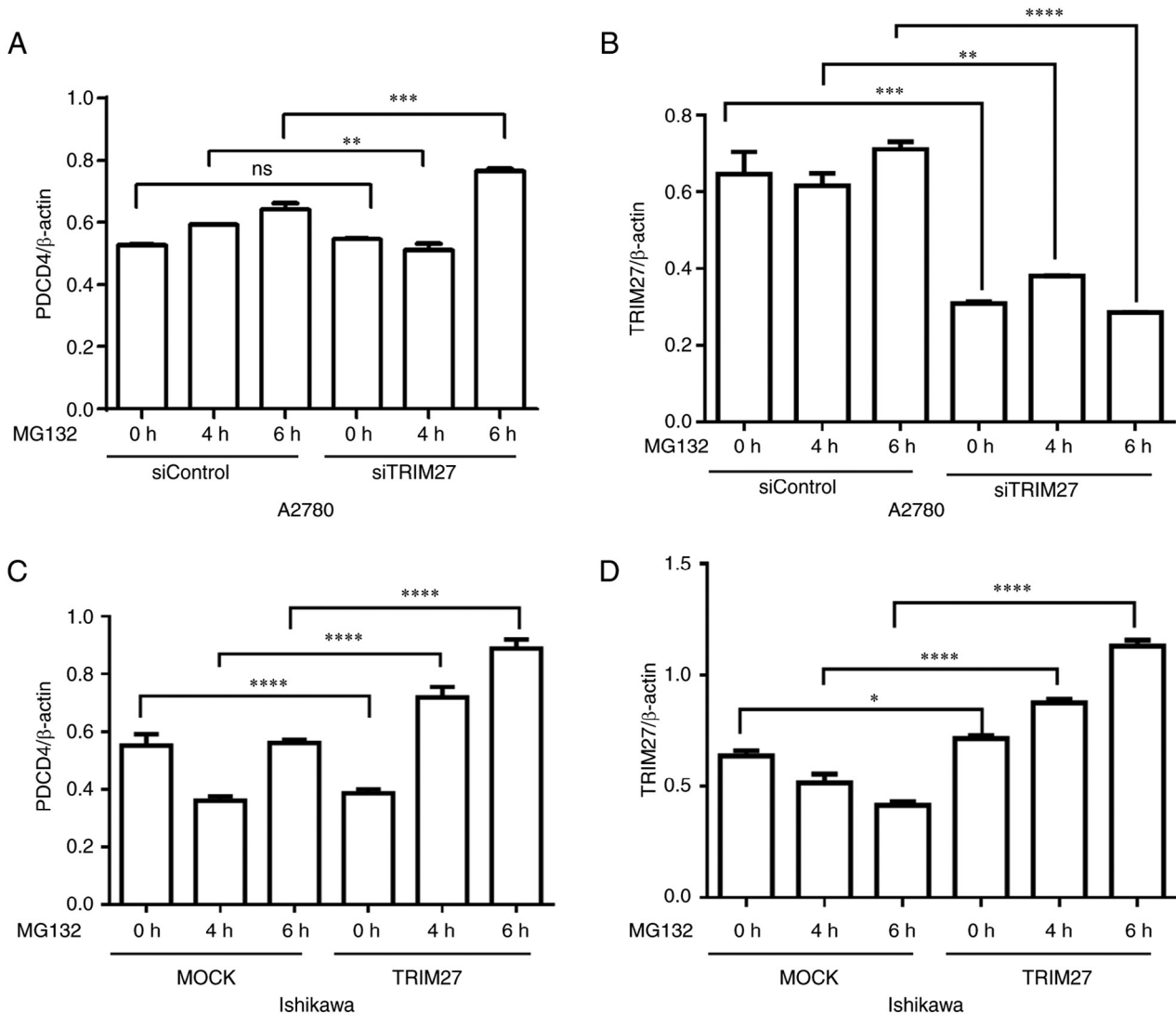


Figure S5. Quantitative analysis for the protein expression of TRIM27 detected by western blot analysis after TRIM27 knock-down/overexpression. (A and B) The quantitative analysis for TRIM27 protein expression after (A) TRIM27 knockdown and (B) TRIM27 overexpression. \*\*\*\* $P < 0.0001$ . TRIM27, tripartite motif-containing 27; si-, small interfering; sh-, short hairpin.

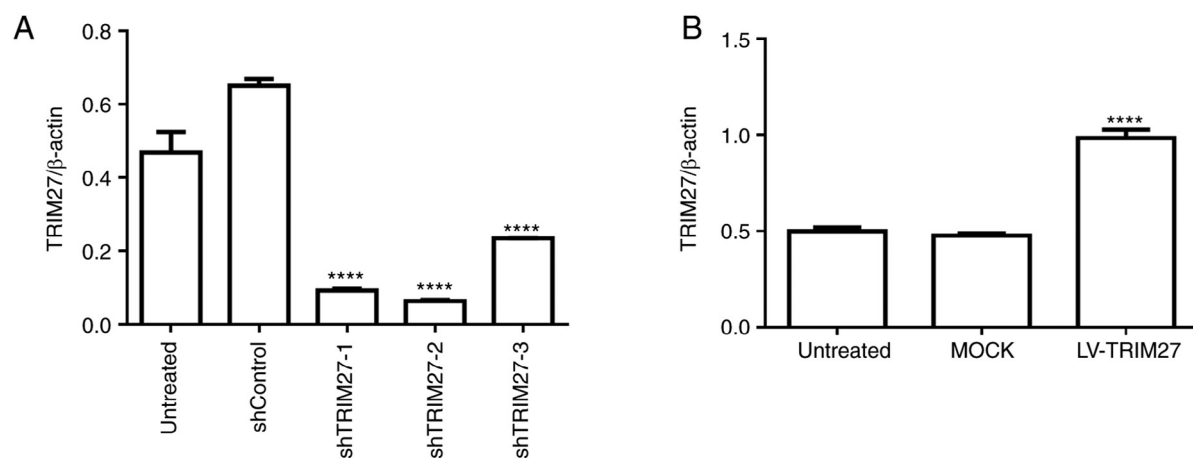


Figure S6. Quantitative analysis for the protein expression of PDCD4 detected by western blotting after PDCD4 knockdown/overexpression. (A and B) The quantitative analysis for PDCD4 protein expression after (A) PDCD4 knockdown and (B) PDCD4 overexpression. \*\*\*\*P<0.0001. PDCD4, programmed cell death 4; si-, small interfering.

