

Figure S1. Glucose consumption of cells in the mixed lymphocyte culture after 48 h. Glucose consumption was measured using a Glucose (HK) Assay Kit. Cells without any drug treatment was used as control and the corresponding obtained value was set as 100%. \* $P < 0.05$ , \*\* $P < 0.005$ , \*\*\* $P < 0.001$ , \*\*\*\* $P < 0.0001$ . @ $P < 0.0001$  vs. combination treatment group with 20  $\mu\text{M}$  3-BrPA. aGVHD, acute graft vs. host disease; TBI, total body irradiation; BMT, bone marrow transplantation; RAPA, rapamycin; 3-BrPA, 3-bromopyruvate.

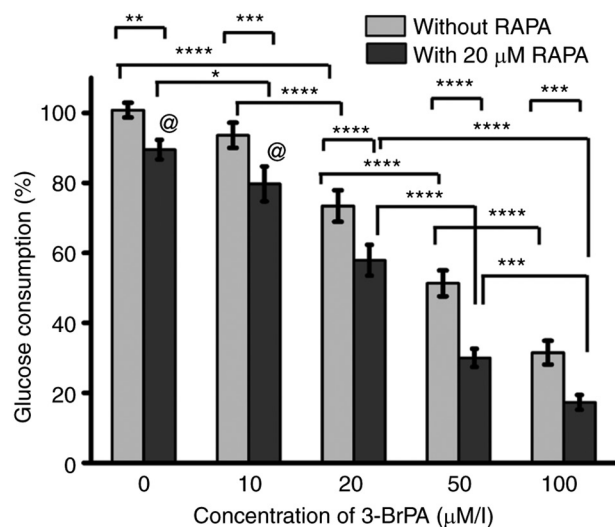


Figure S2. Representative flow cytometry images of cell apoptosis after the combination treatment of 3-BrPA and RAPA on the mixed lymphocyte culture for 48 h. RAPA, rapamycin; 3-BrPA, 3-bromopyruvate.

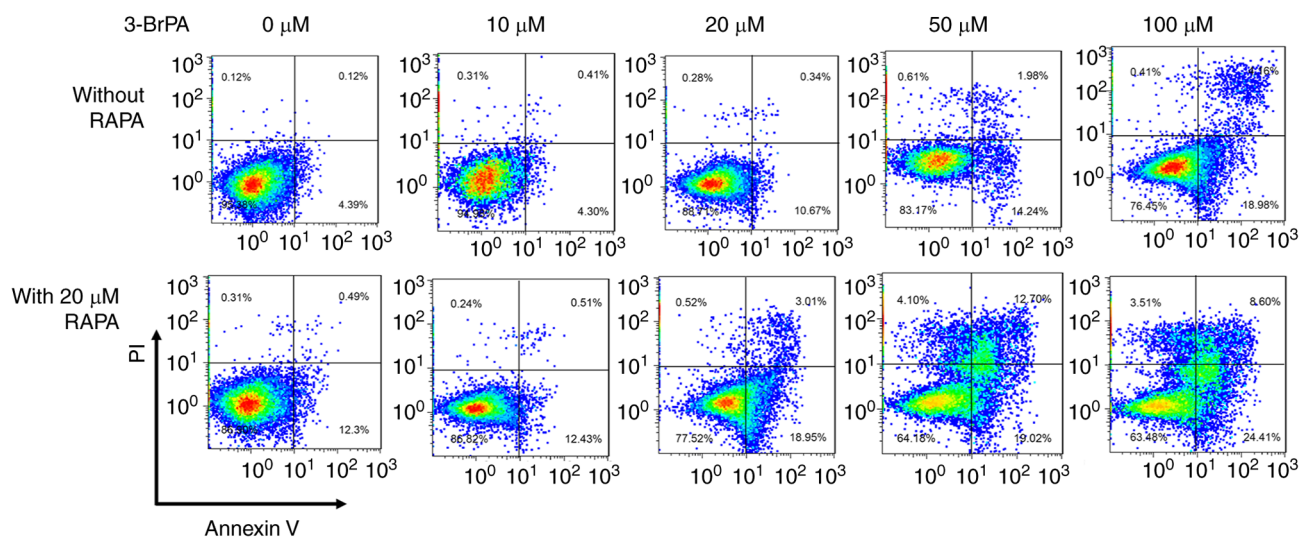


Figure S3. Representative flow cytometry diagrams showing the chimeric ratios of aGVHD, 3-BrPA, RAPA-2.5 mg, RAPA-5 mg, RAPA-plus 3-BrPA treatment and BMT groups. aGVHD, acute graft versus host disease; RAPA, rapamycin; 3-BrPA, 3-bromopyruvate; BMT, bone marrow transplantation; FSC, forward scatter.

