

Figure S1. Composition of the fecal microbiota of healthy controls and patients with CRC of stages I, II, III and IV at the phylum level. (A) The relative abundance of microorganisms comprising the fecal microbiota was determined. Each column represented one fecal sample and the ordinate indicated the relative abundance of taxa. Patients were presented according to disease status, including stages I-IV CRC and O for healthy controls. (B) The relative abundance of phylum top 20 between healthy controls and patients with CRC of stages I-IV. CRC, colorectal cancer.

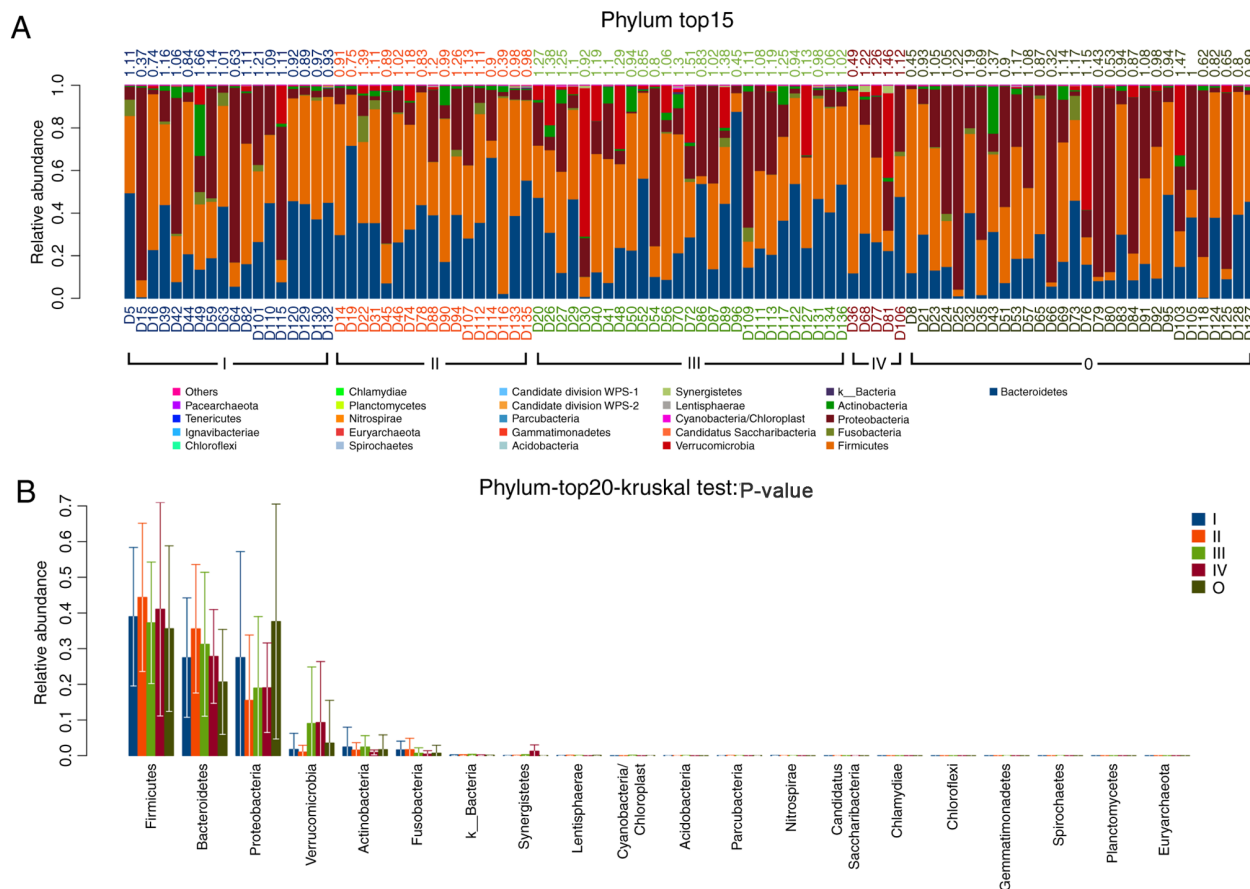


Figure S2. Relative abundance of phyla in fecal samples of healthy controls and patients with CRC of stages I-III. CRC, colorectal cancer.

