

Figure S1. CTBP1-AS localizes in the nucleus of primary granulosa cell. The expression levels of CTBP1-AS in separated cytoplasm and nucleus were analyzed by reverse transcription-quantitative PCR. Data are presented as the mean \pm SEM. ***P<0.01. CTBP1-AS, C-terminal-binding protein 1 antisense.

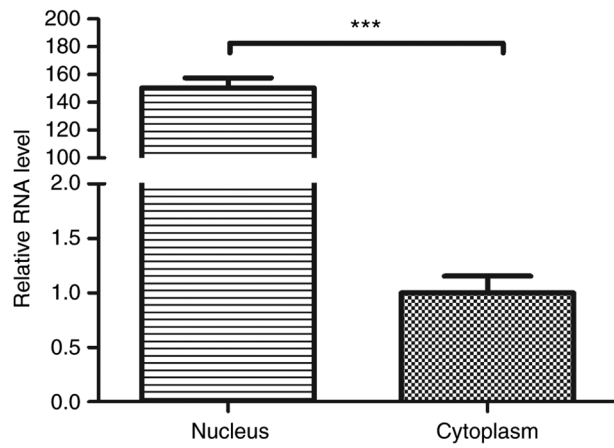


Figure S2. CTBP1-AS knockdown inhibits the proliferation of granulosa cells. Colony formation assays were conducted using primary granulosa cells transfected with siCTBP1-AS #1, siCTBP1-AS #2 or siControl. Representative images for colony growth are shown along with quantification of the number of colonies. Data are presented as the mean \pm SEM of three independent experiments. ** $P < 0.01$, *** $P < 0.001$. CTBP1-AS, C-terminal-binding protein 1 antisense.

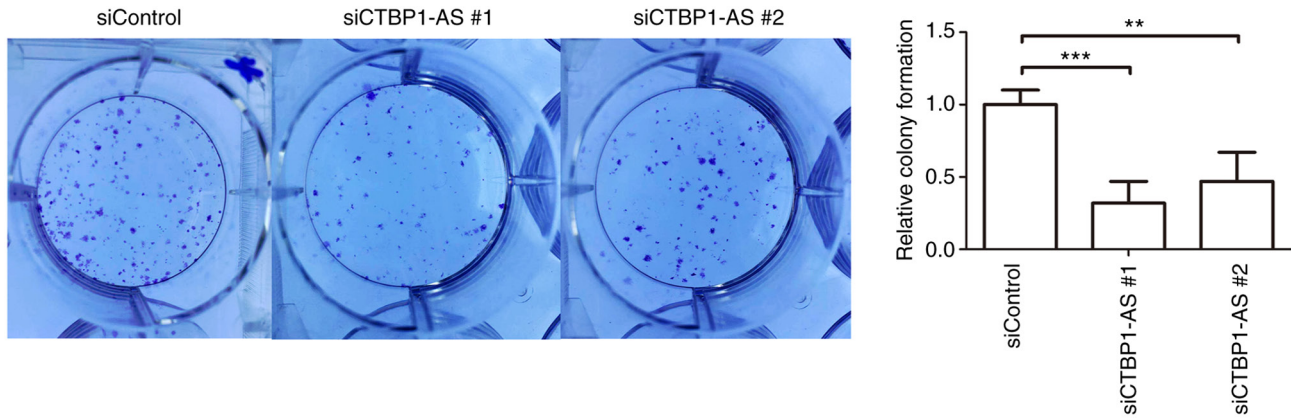


Figure S3. Cryptotanshinone promotes the methylation of the whole genome of KGN cells. (A) KGN cells were treated with different concentrations of cryptotanshinone for 24 h and the methylation status was examined by 5mC staining. (B) Intensity of 5mC-labeled KGN cells were counted and shown. Data are presented as the mean \pm SEM. * P <0.05 and ** P <0.01. 5mC, 5-methylcytosine.

