

Figure S1. Representative images for each score of staining intensity and density in the IHC results (scale bar, 50  $\mu\text{m}$ ). IHC, immunohistochemistry.

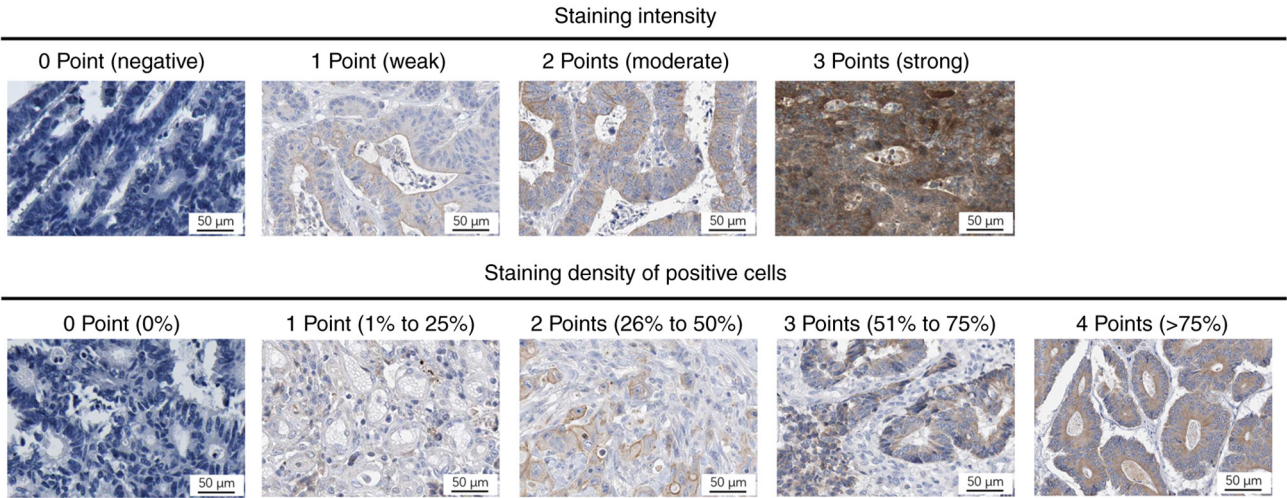


Figure S2. Knockdown efficiency of PLK4-siRNA in CRC cell lines. (A) Detection of PLK4 using western blotting. (B) Comparison of PLK4 protein level among groups. One-way ANOVA followed by Tukey's multiple comparisons test was applied. PLK4, polo-like kinase 4; CRC, colorectal cancer; siRNA, short interfering RNA; NC, negative control.

