

Figure S1. Negative control section without primary MELK antibody. MELK, maternal embryonic leucine zipper kinase.

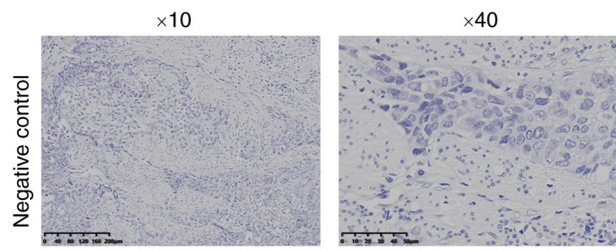
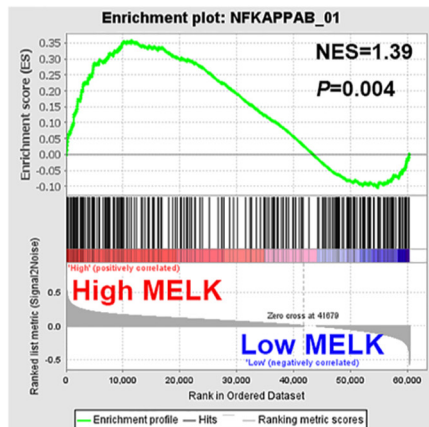


Figure S2. (A) GSEA plot showing that MELK expression was positively correlated with NF- $\kappa$ B-activated gene signature. (B) Western blot analysis of  $\beta$ -catenin, p-SMAD2 and p-AKT in ESCC cells with MELK knockdown. GSEA, gene set enrichment analysis; MELK, maternal embryonic leucine zipper kinase; NES, normalized enrichment score; sh, short hairpin RNA; NC, negative control; p-, phosphorylated.

A



B

