

Figure S1. ROC curves by stage. ROC curves for IL-8, IL-10, IFN- γ , ICAM-1, IL-22 and MMP-7 in TNM stages I (A-F), II (G-L) and III-IV (M-R). IL-8 had discriminative potential for each stage of CRC; ICAM-1 showed some biomarker potential for stage II, with a sensitivity of 0.86, specificity of 0.63 and an AUC of 0.724. AUC, area under the curve; ICAM-1, intercellular adhesion molecule 1; IFN, interferon; IL, interleukin; CRC, colorectal cancer; ROC, receiver operating characteristic.

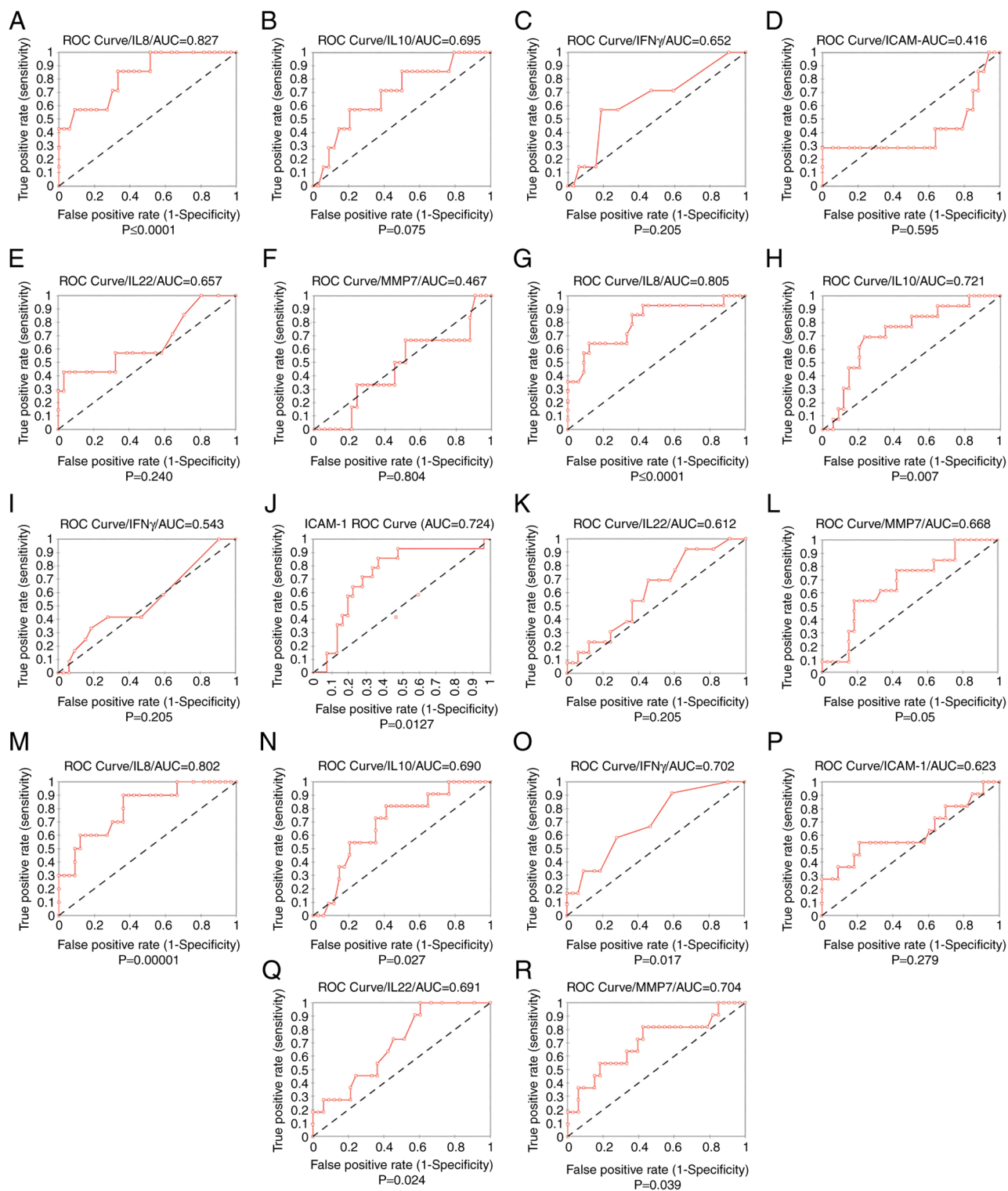


Figure S2. Logistic regression curves for the combinations of molecules in TNM stage I. (A) IL4 + IL6 + IL8 + IFN- γ , (B) IL4 + IL6 + IL8, (C) IL6 + IL8, (D) IL4 + IL8 and (E) IL6 + IL8 + IL22. The combination IL6 + IL8 + IL22 had a good performance, with a sensitivity of 0.85, specificity of 0.89 and an AUC of 0.927. (F) Logistic regression for the same combination (IL6 + IL8 + IL22) in all CRC patients showed unimpressive performance. IL, interleukin; IFN, interferon; st, stage; CRC, colorectal cancer.

