

Figure S1. Flow chart of the present study. EBC, early breast cancer; IHC, immunohistochemistry; BBD, benign breast disease; HC, healthy control.

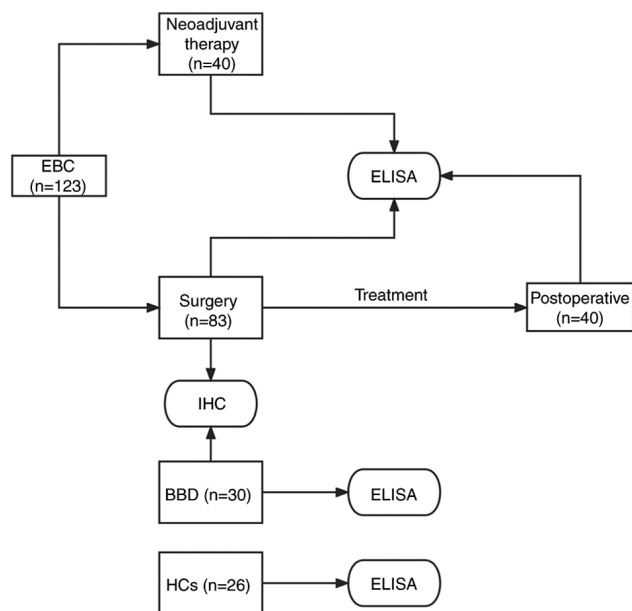


Figure S2. Receiver operating characteristic curve used to determine the optimal cut-off values of high and low solute carrier family 50 member 1 expression in TCGA database. TCGA, The cancer genome atlas; AUC, area under the curve.

