

Figure S1. ERK1/2 expression levels in the murine colon. (A) Representative immunohistochemical images of normal and ERK1/2-expressing mucosa of C57/BL and KKAy mice. Magnification, x200. (B) ERK1/2 immunoreactive scores in the upper half of the crypt of C57/BL and KKAy mice. C57/BL, C57BL/6JJcl mice; KKAy, C57BL/6JJcl-derived KK-A<sup>y</sup>/TAJcl mice.

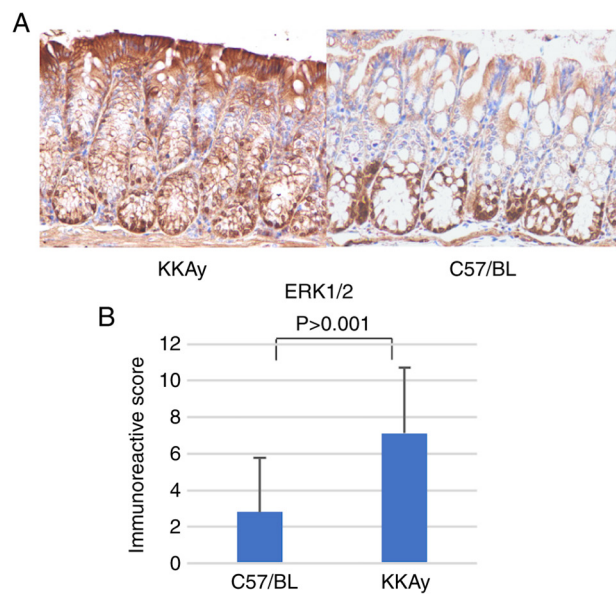


Figure S2. Association between EphB2 expression and tumour differentiation in the human colon. (A) Representative immunohistochemistry images of EphB2-stained in well-, moderately and poorly differentiated tumours. Magnification,  $\times 200$ . (B) Immunoreactive tumour EphB2 scores according to the degree of tumour differentiation. w/d, well-differentiated; m/d, moderately differentiated; p/d, poorly differentiated; Eph, ephrin.

