

Figure S1. Knockdown of HuR increases cell sensitivity to DDP by enhancing cell apoptosis and cell cycle arrest. (A) Cell apoptosis and (B) cell cycle progression was assessed by flow cytometric analysis in siHuR-transfected small cell lung cancer cells after DDP exposure. HuR, human antigen R; DDP, cisplatin; si, small interfering; NC, negative control.

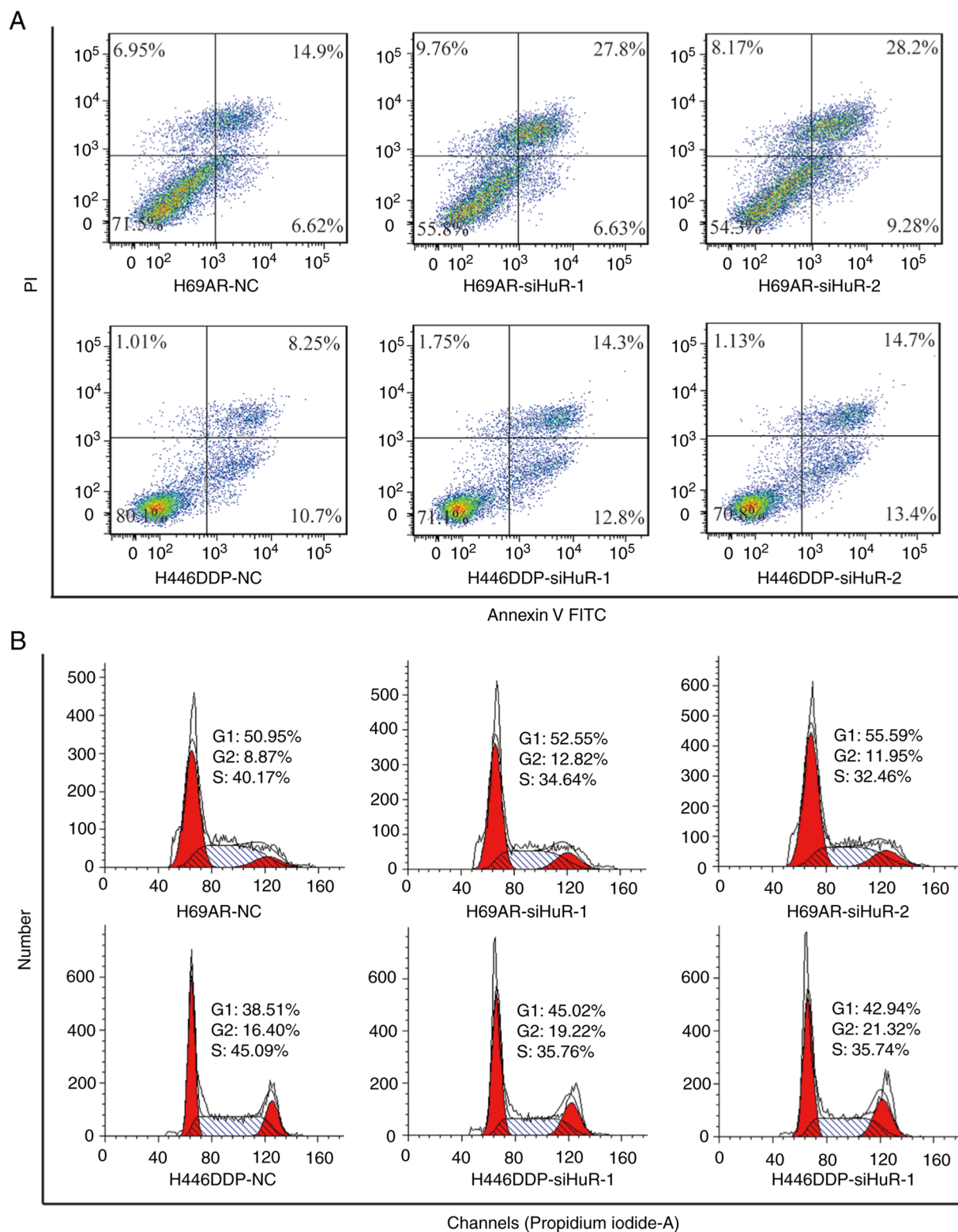


Figure S2. Knockdown of HuR increases cell sensitivity to VP16 by enhancing cell apoptosis and cell cycle arrest. (A) Cell apoptosis and (B) cell cycle progression was assessed by flow cytometric analysis in siHuR-transfected small cell lung cancer cells after VP16 exposure. HuR, human antigen R; VP16, etoposide; si, small interfering; NC, negative control.

