

Figure S1. Basal protein expression of ATP1A1 and ATP1A3. Protein standard (Precision Plus Protein™ All Blue Prestained Protein Standards; cat. no. 1610373, Bio-Rad Laboratories, Inc.). (A) Total protein for normalization of protein expression of ATP1A1, (B) Total protein for normalization of protein expression of ATP1A3. (C) Protein expression of ATP1A1, and (D) protein expression of ATP1A3. ATP1A1 and ATP1A3, Na⁺/K⁺-ATPase alpha subunits 1 and 3.

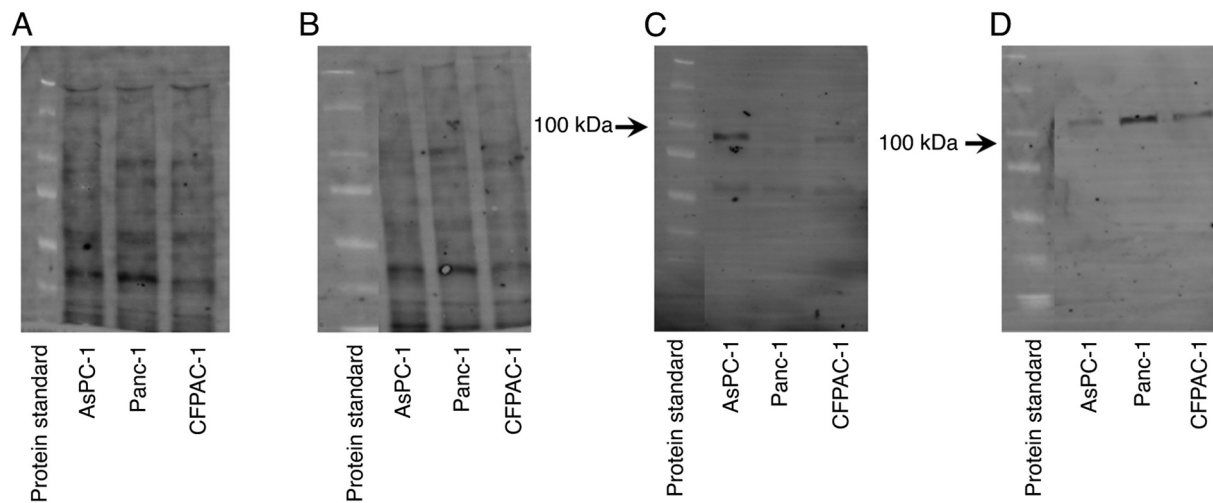


Figure S2. Protein expression of ATP1A1 and ATP1A3 in AsPC-1 cells and the control with digitoxin treatment. Protein standard (Precision Plus Protein™ All Blue Prestained Protein Standards; cat. no. 1610373, Bio-Rad Laboratories, Inc.). (A) Total protein for normalization of protein expression of ATP1A1, (B) Total protein for normalization of protein expression of ATP1A3, (C) protein expression of ATP1A1, and (D) protein expression of ATP1A3. ATP1A1 and ATP1A3, Na⁺/K⁺-ATPase alpha subunits 1 and 3.

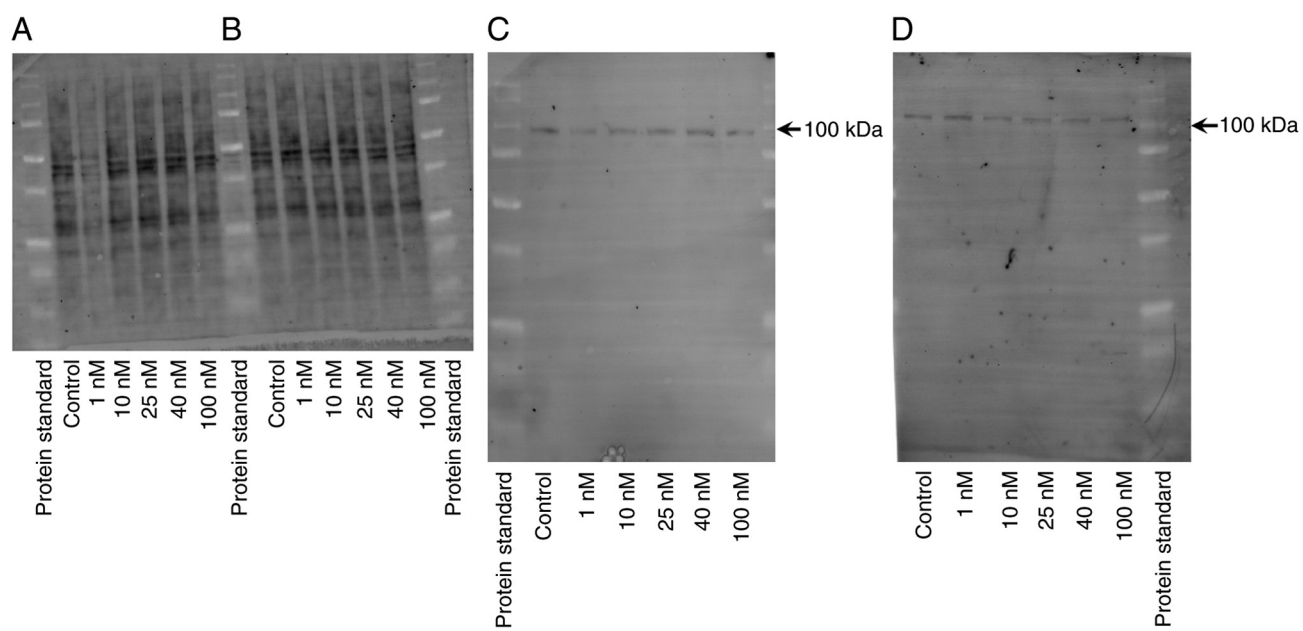


Figure S3. Protein expression of ATP1A1 and ATP1A3 in Panc-1 cells and the control and with digitoxin treatment. Protein standard (Precision Plus Protein™ All Blue Prestained Protein Standards; cat. no. 1610373, Bio-Rad Laboratories, Inc.). (A) Total protein for normalization of protein expression of ATP1A1, (B) Total protein for normalization of protein expression of ATP1A3, (C) protein expression of ATP1A1, and (D) protein expression of ATP1A3. ATP1A1 and ATP1A3, Na⁺/K⁺-ATPase alpha subunits 1 and 3.

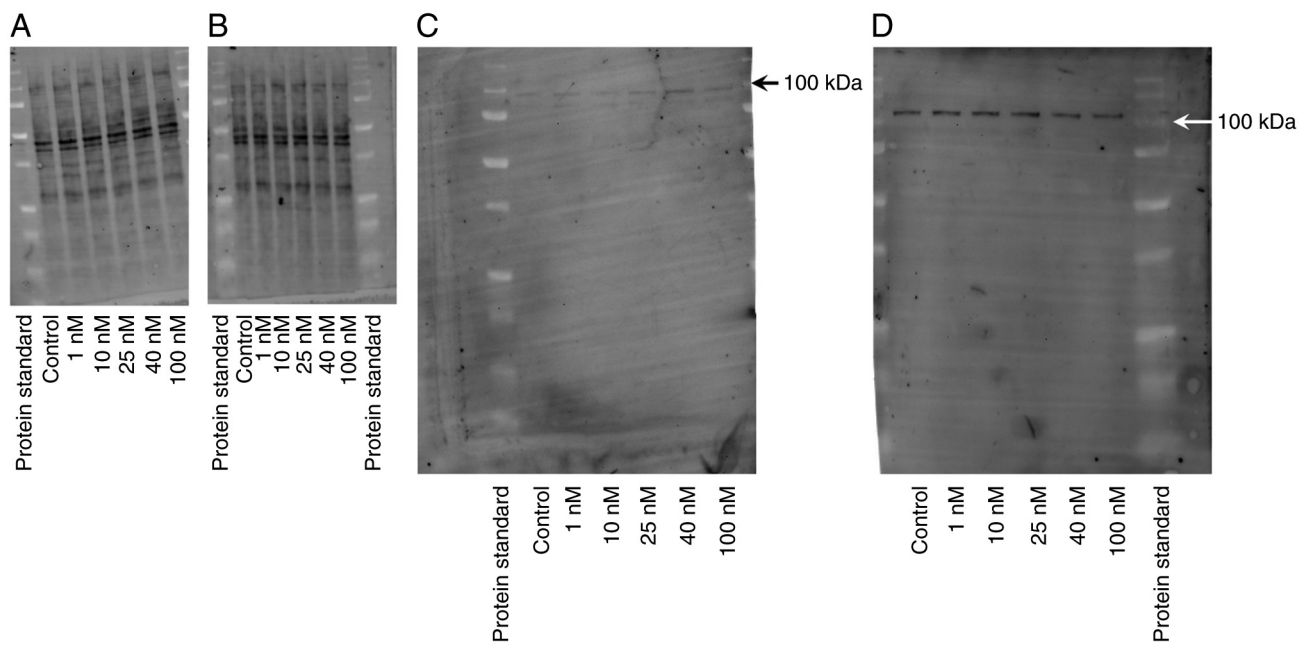


Figure S4. Protein expression of ATP1A1 and ATP1A3 in CFPAC-1 cells and the control and with digitoxin treatment. Protein standard (Precision Plus Protein™ All Blue Prestained Protein Standards; cat. no. 1610373, Bio-Rad Laboratories, Inc.). (A) Total protein for normalization of protein expression of ATP1A1, (B) Total protein for normalization of protein expression of ATP1A3, (C) protein expression of ATP1A1, and (D) protein expression. Of ATP1A3. ATP1A1 and ATP1A3, Na⁺/K⁺-ATPase alpha subunits 1 and 3.

