

Figure S1. Histological slides of glioblastomas marked for STAT5b (left: IHC score <3 , right: IHC score ≥ 3). These images (x) were captured on an Olympus BX50 microscope (magnification, x20) using a Canon EOS1200D digital camera. IHC, immunohistochemistry.

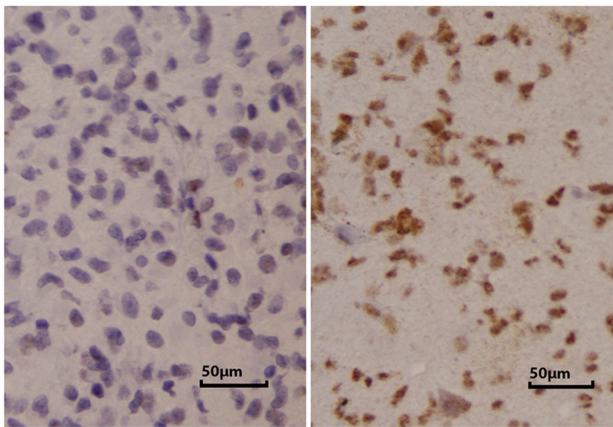


Figure S2. Scratch test (healing) assay of GM2 cells, at T0 and 24 h. si-, small interfering.

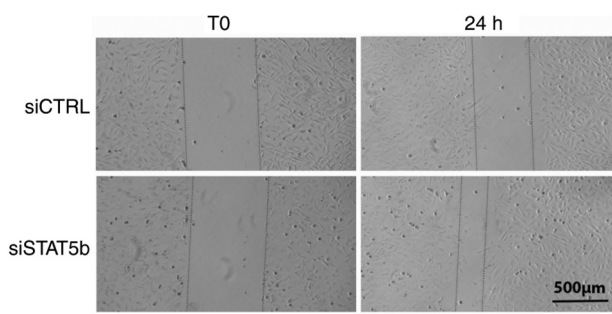


Figure S3. Transwell invasion assay performed 48 h after siRNA transfection, invasion through Matrigel expressed in percentage of siControl transfected cells after 6 h of invasion. si-, small interfering.

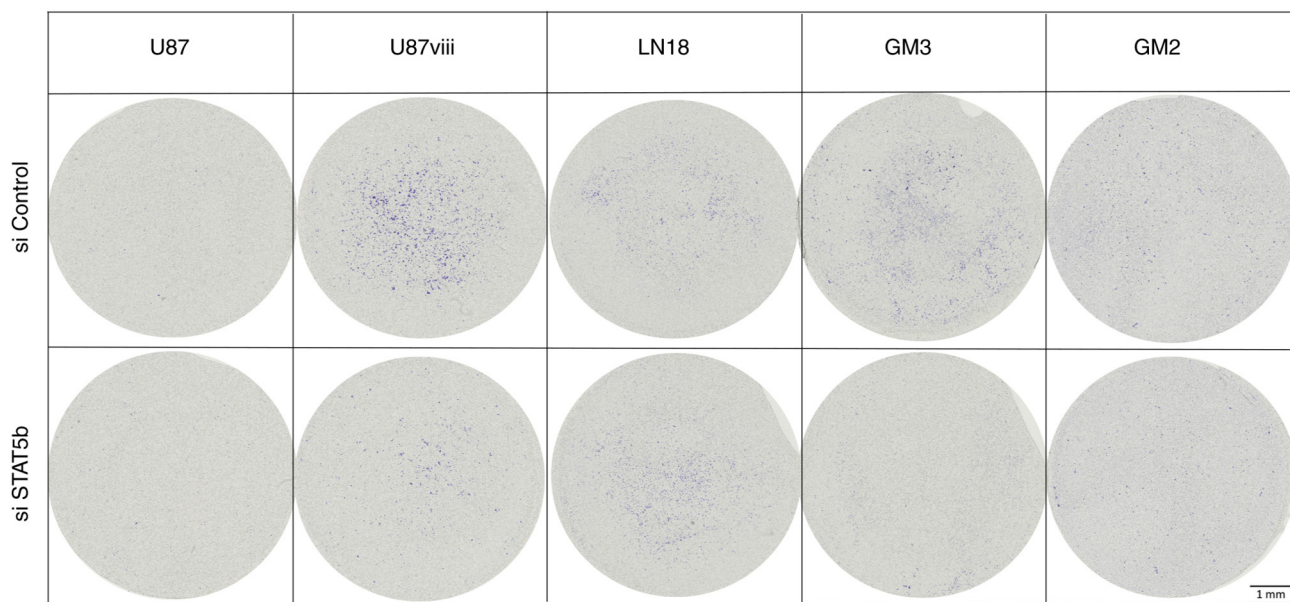


Figure S4. STAT5b and Bcl-XL protein level expression after 48 h of siRNA transfection evaluated by western blotting. The densitometric measurements of the different western blots are provided in Table SIII.

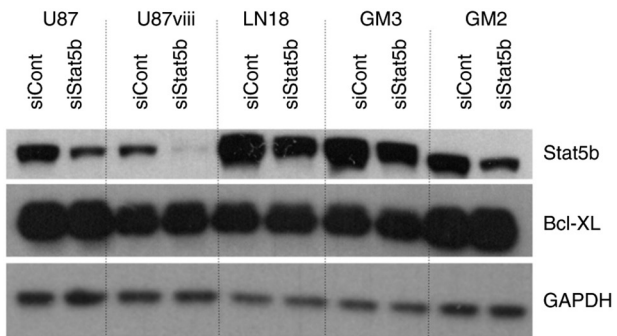


Figure S5. STAT5b and PD-L1 protein level expression after 48 h of siRNA transfection evaluated by western blotting. The densitometric measurements of the different western blots are provided in Table SIII.

