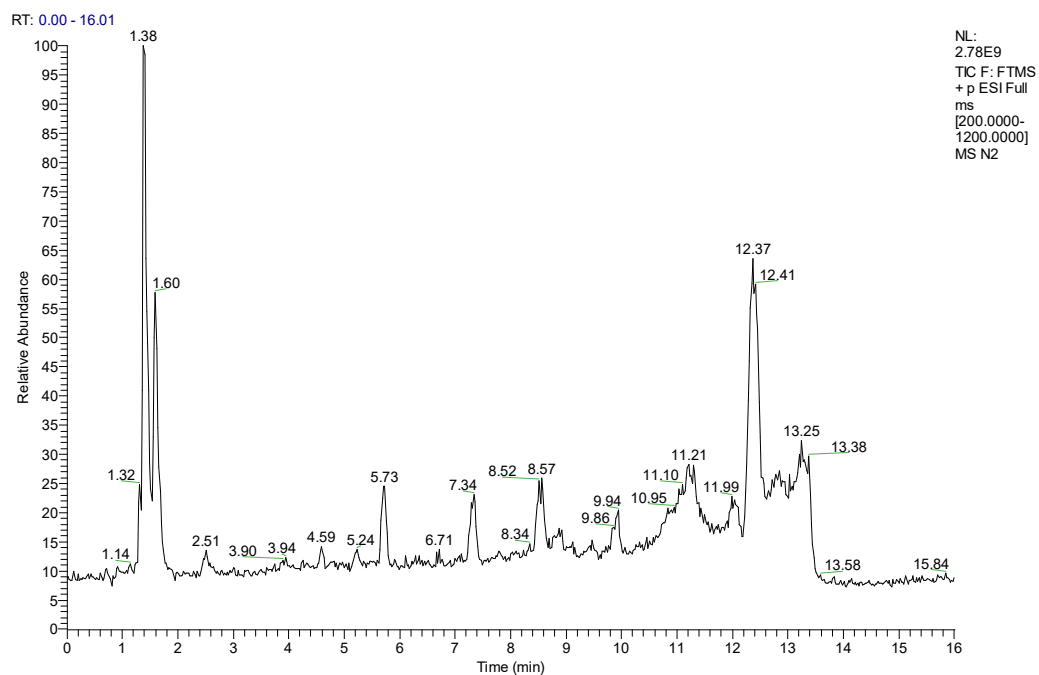
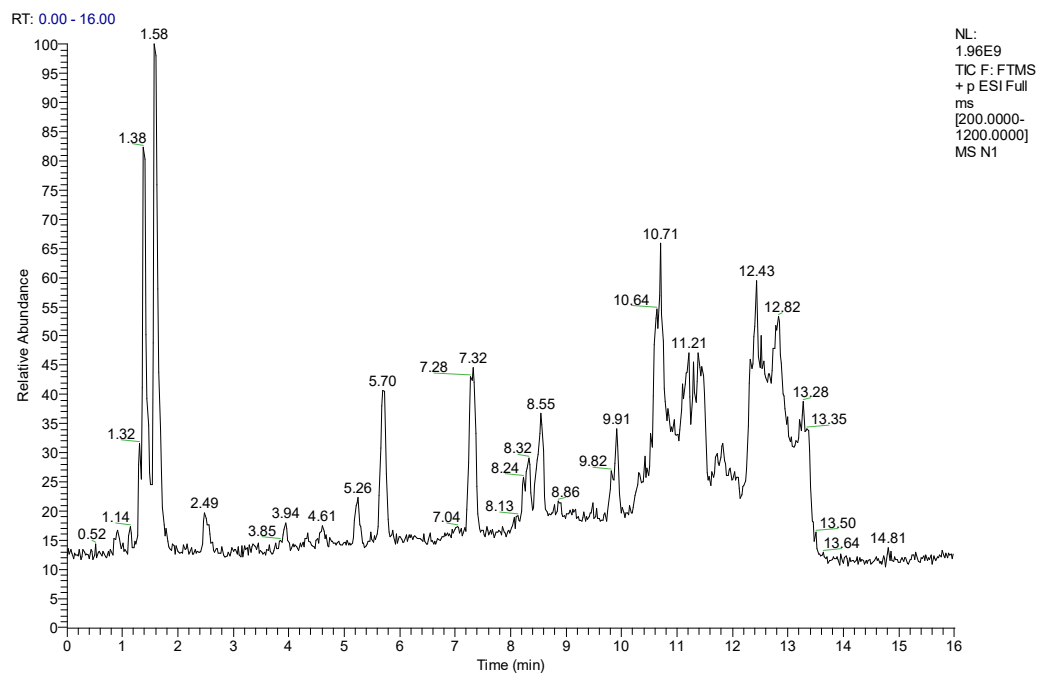
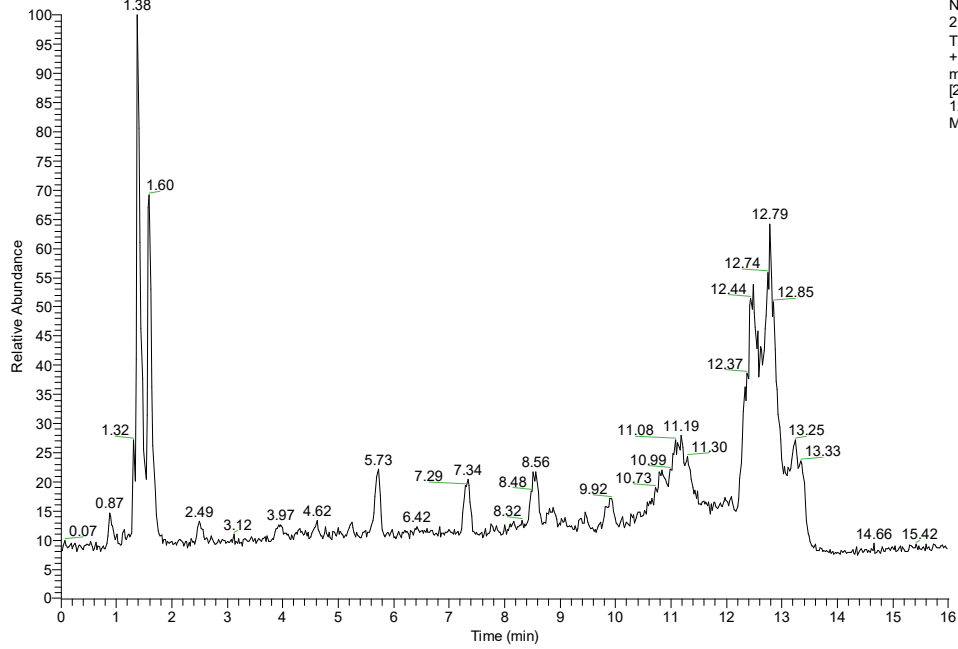


Data S1. Chromatography spectra for each samssple.

POS

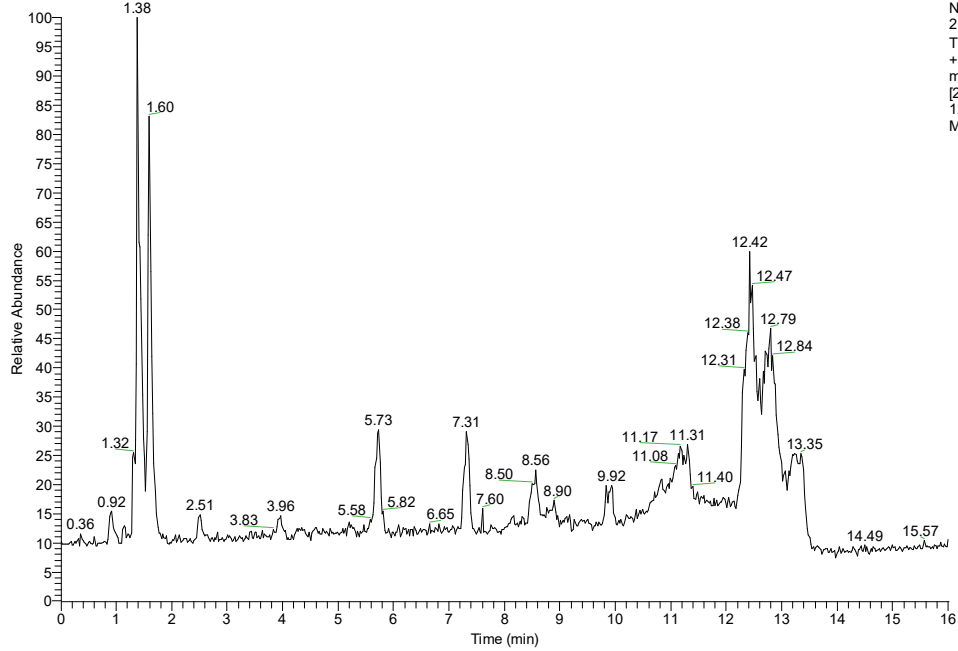


RT: 0.00 - 16.00



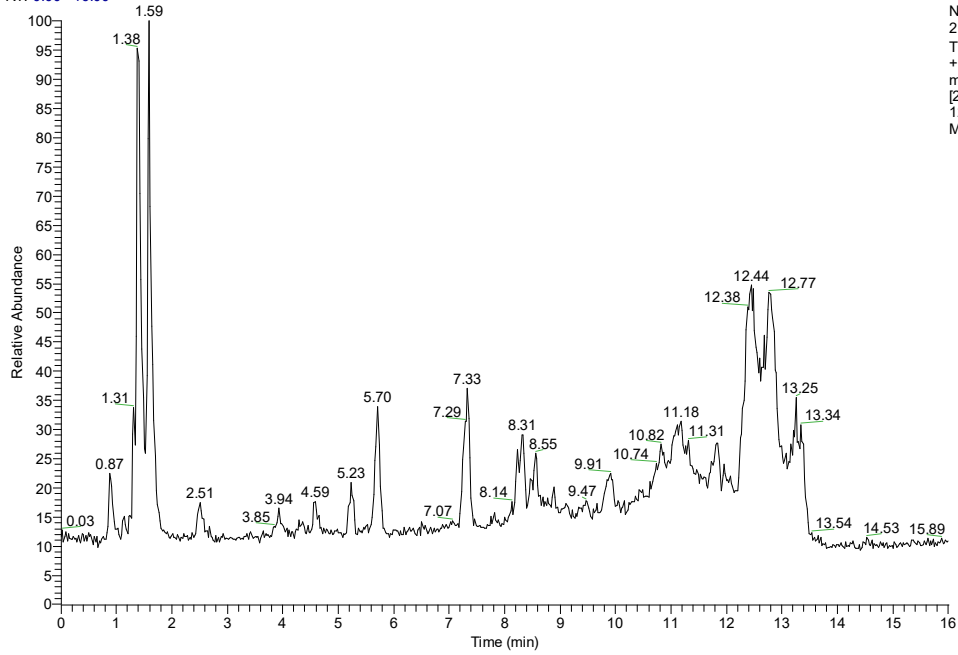
NL:
2.81E9
TIC F: FTMS
+ p ESI Full
ms
[200.0000-
1200.0000]
MS N3

RT: 0.00 - 16.01



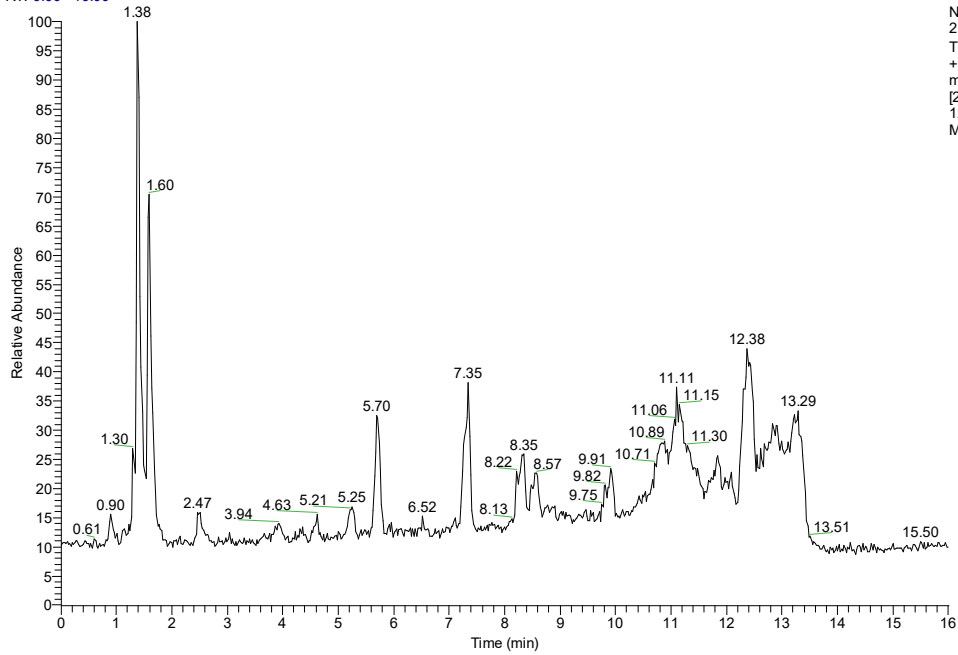
NL:
2.62E9
TIC F: FTMS
+ p ESI Full
ms
[200.0000-
1200.0000]
MS T1

RT: 0.00 - 16.00



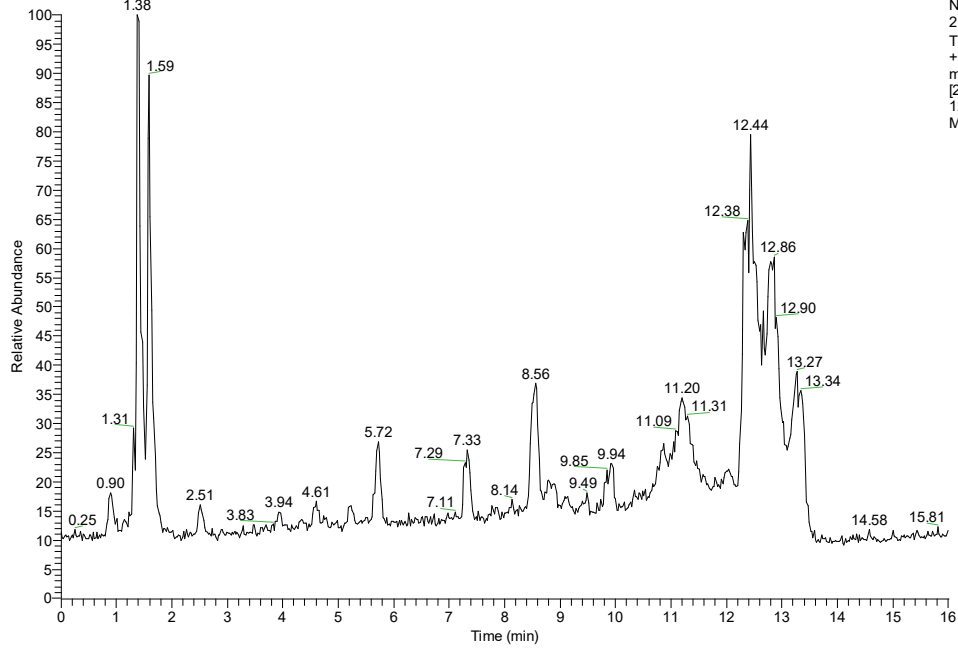
NL:
2.25E9
TIC F: FTMS
+ p ESI Full
ms
[200.0000-
1200.0000]
MS T2

RT: 0.00 - 16.00



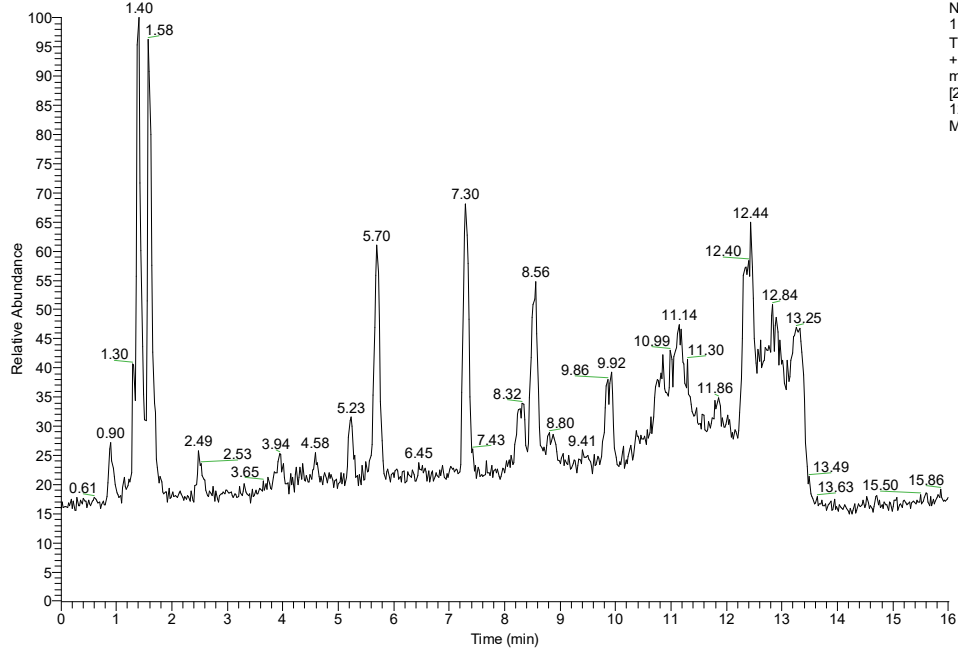
NL:
2.36E9
TIC F: FTMS
+ p ESI Full
ms
[200.0000-
1200.0000]
MS T3

RT: 0.00 - 16.00



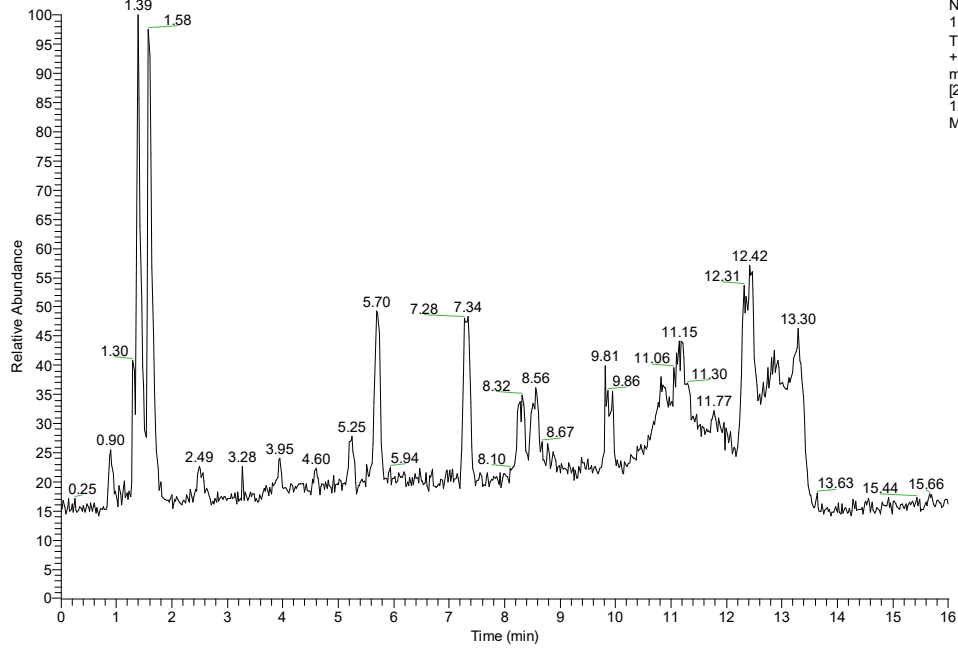
NL:
2.30E9
TIC F: FTMS
+ p ESI Full
ms
[200.0000-
1200.0000]
MS T4

RT: 0.00 - 16.00



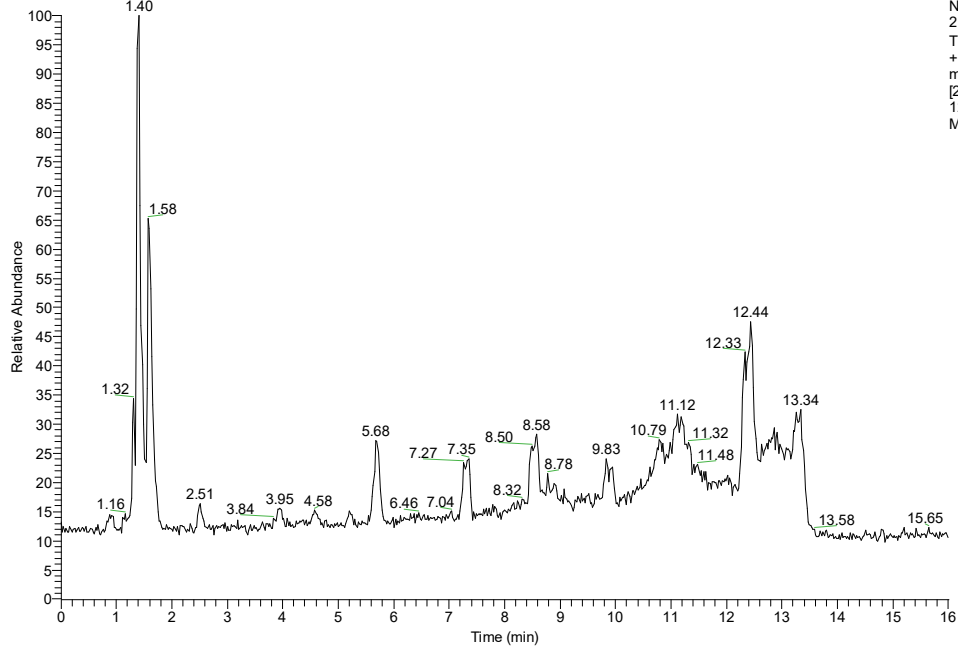
NL:
1.43E9
TIC F: FTMS
+ p ESI Full
ms
[200.0000-
1200.0000]
MS T5

RT: 0.00 - 16.00



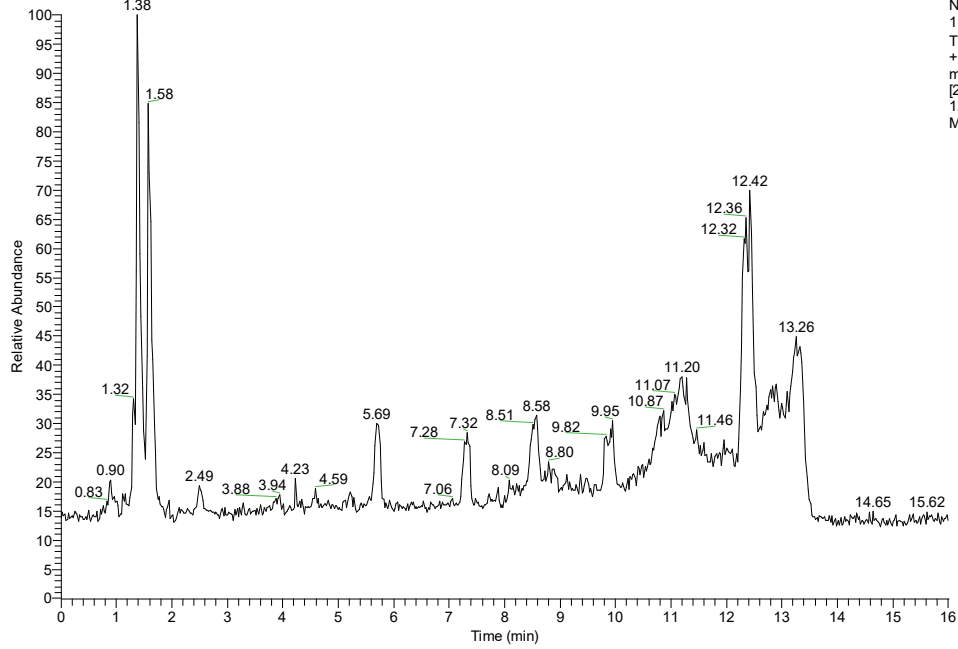
NL:
1.52E9
TIC F: FTMS
+ p ESI Full
ms
[200.0000-
1200.0000]
MS T6

RT: 0.00 - 16.00



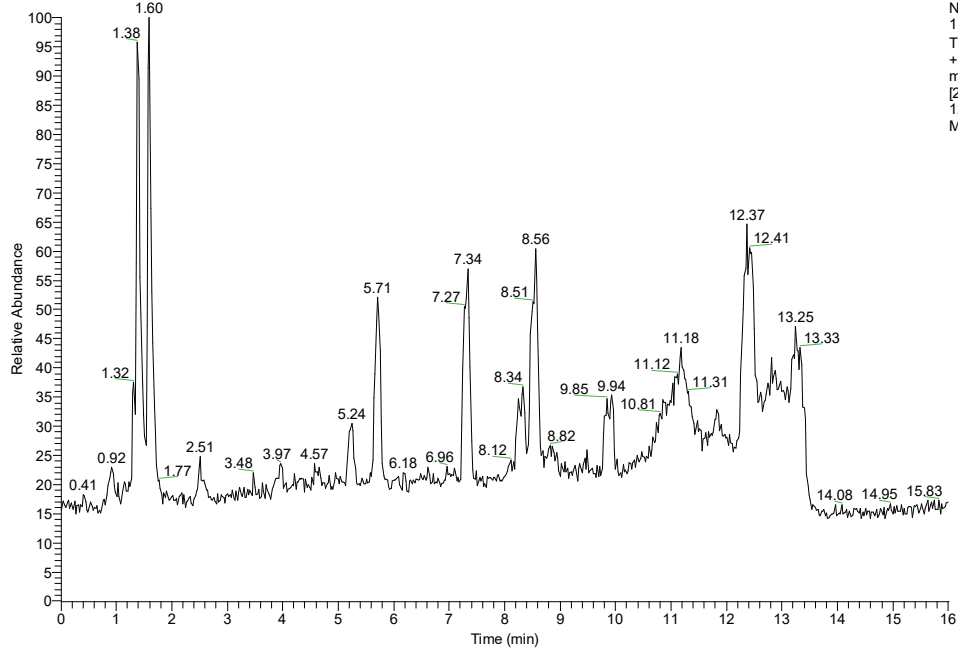
NL:
2.10E9
TIC F: FTMS
+ p ESI Full
ms
[200.0000-
1200.0000]
MS T7

RT: 0.00 - 16.01



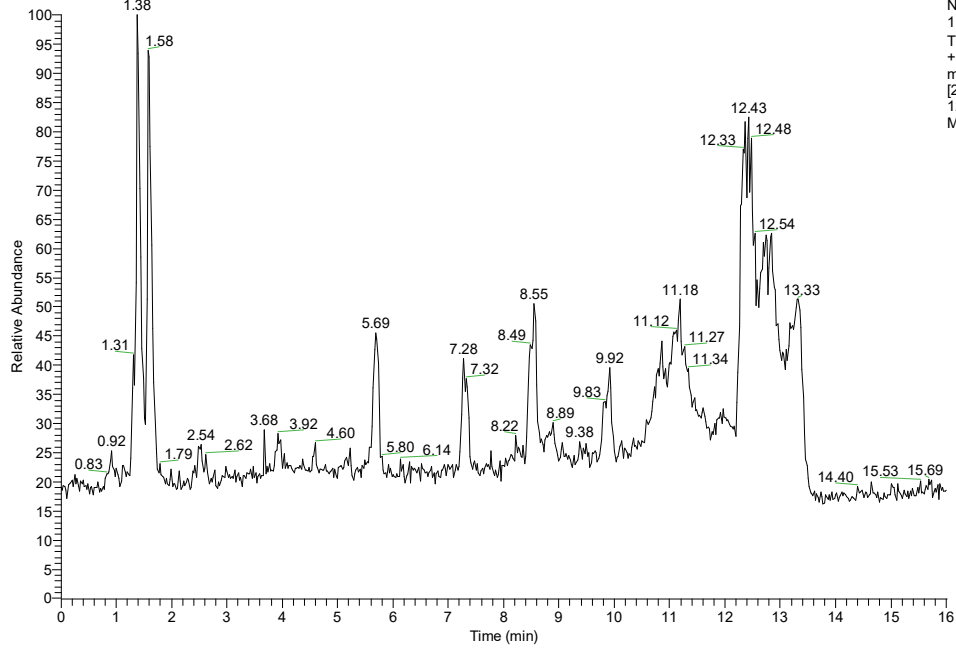
NL:
1.80E9
TIC F: FTMS
+ p ESI Full
ms
[200.0000-
1200.0000]
MS T8

RT: 0.00 - 16.00



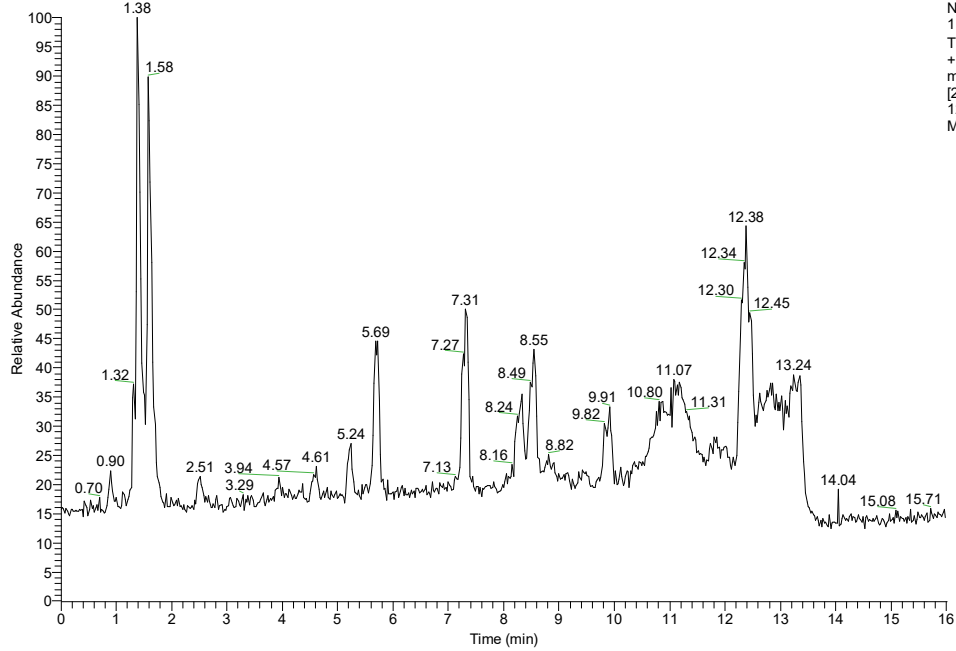
NL:
1.51E9
TIC F: FTMS
+ p ESI Full
ms
[200.0000-
1200.0000]
MS T9

RT: 0.00 - 16.01



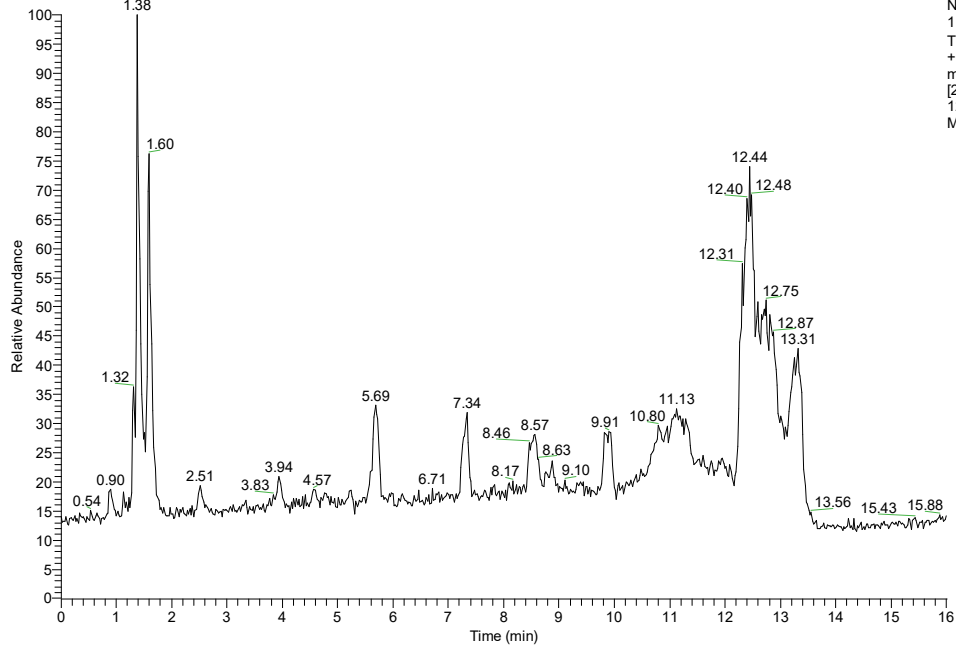
NL:
1.38E9
TIC F: FTMS
+ p ESI Full
ms
[200.0000-
1200.0000]
MS T10

RT: 0.00 - 16.00



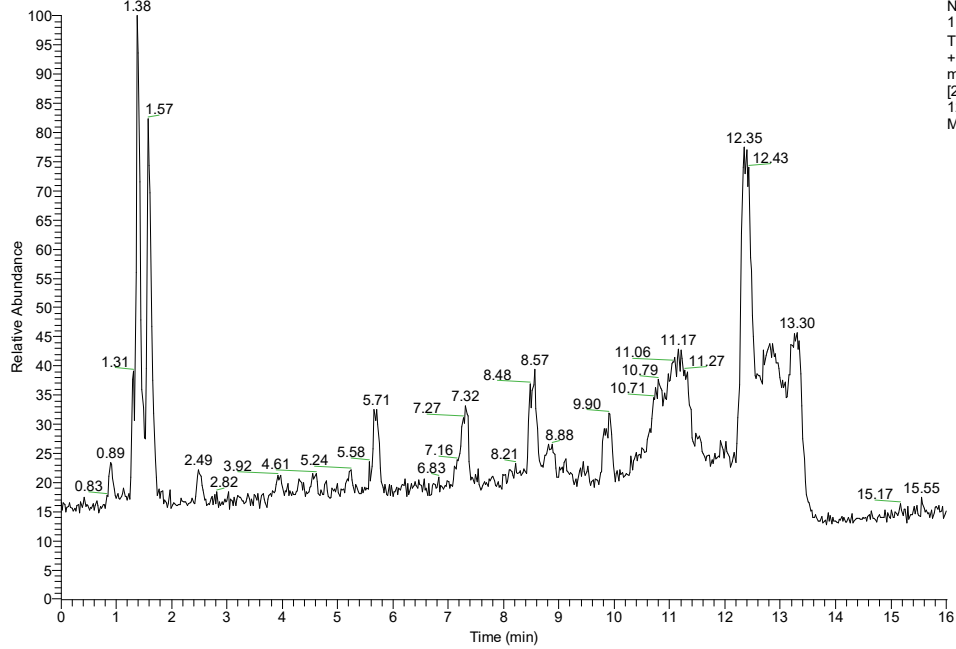
NL:
1.67E9
TIC F: FTMS
+ p ESI Full
ms
[200.0000-
1200.0000]
MS T11

RT: 0.00 - 16.00



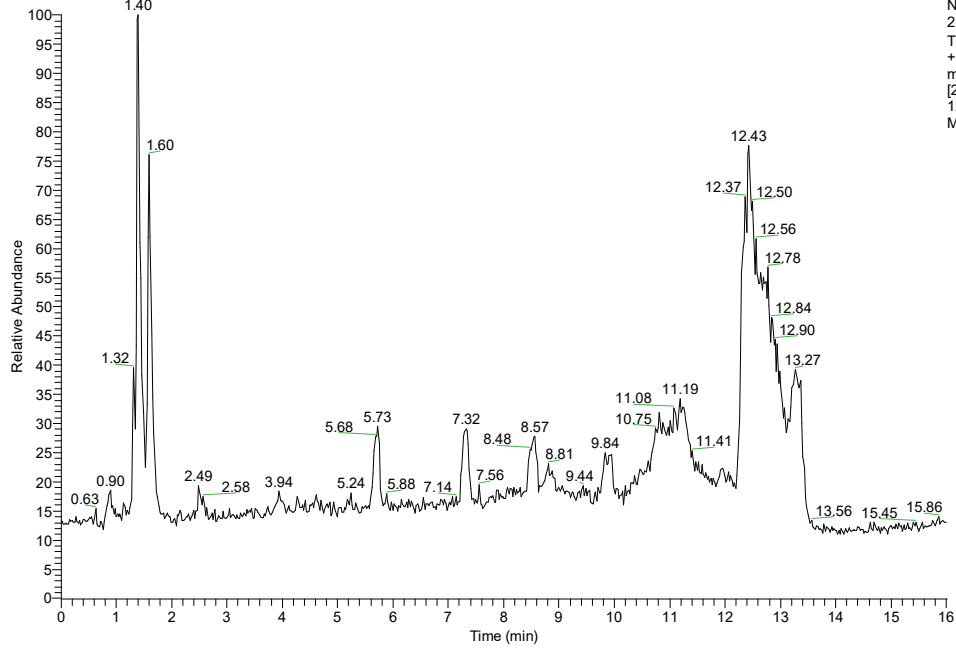
NL:
1.84E9
TIC F: FTMS
+ p ESI Full
ms
[200.0000-
1200.0000]
MS TT2

RT: 0.00 - 16.01



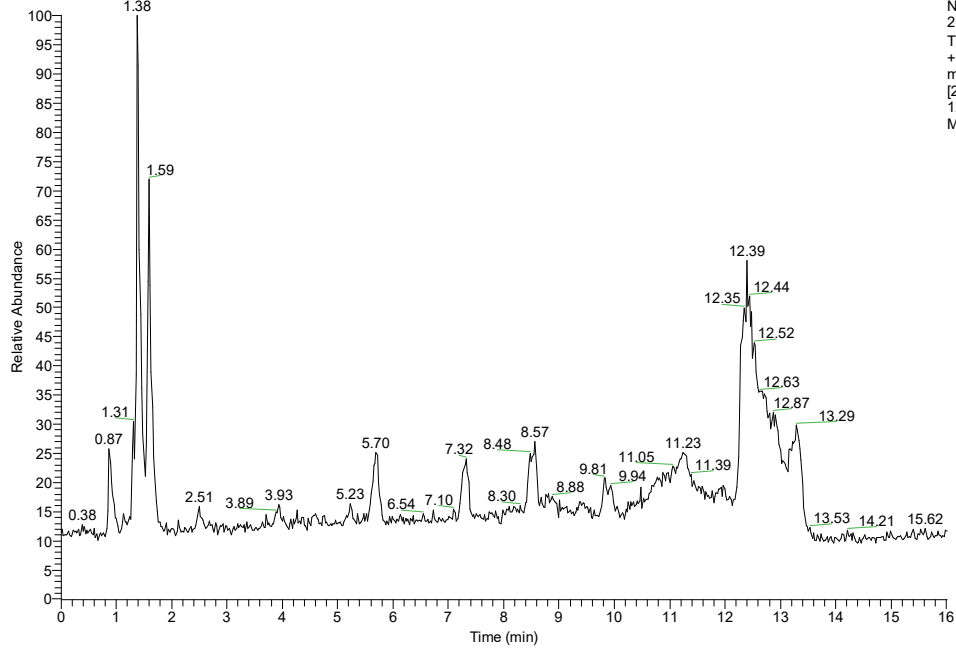
NL:
1.66E9
TIC F: FTMS
+ p ESI Full
ms
[200.0000-
1200.0000]
MS TT3

RT: 0.00 - 16.00



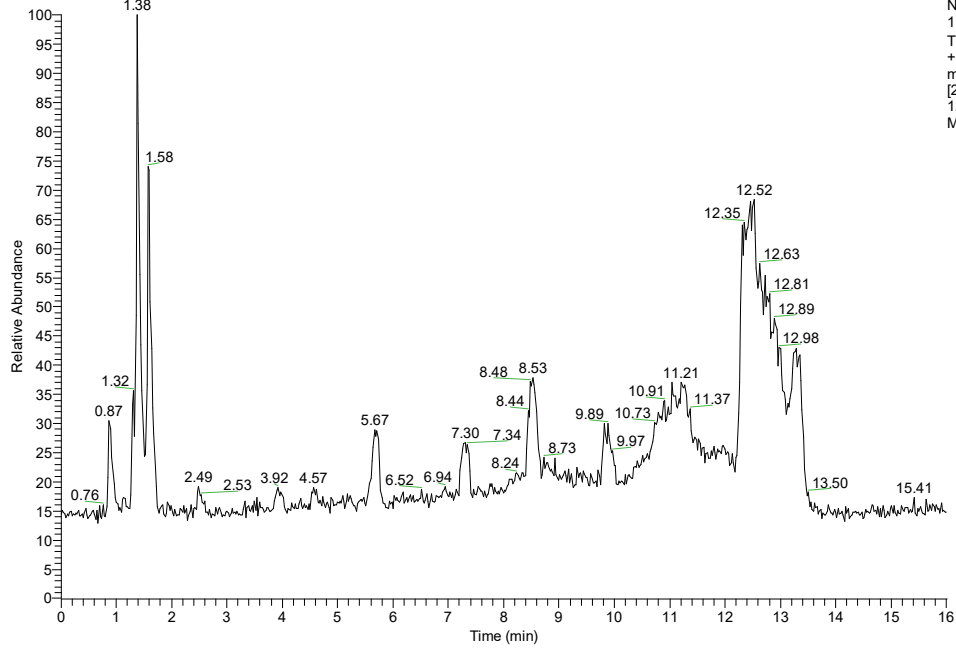
NL: ...
2.00E9
TIC F: FTMS
+ p ESI Full
ms
[200.0000-
1200.0000]
MS TT4

RT: 0.00 - 16.00



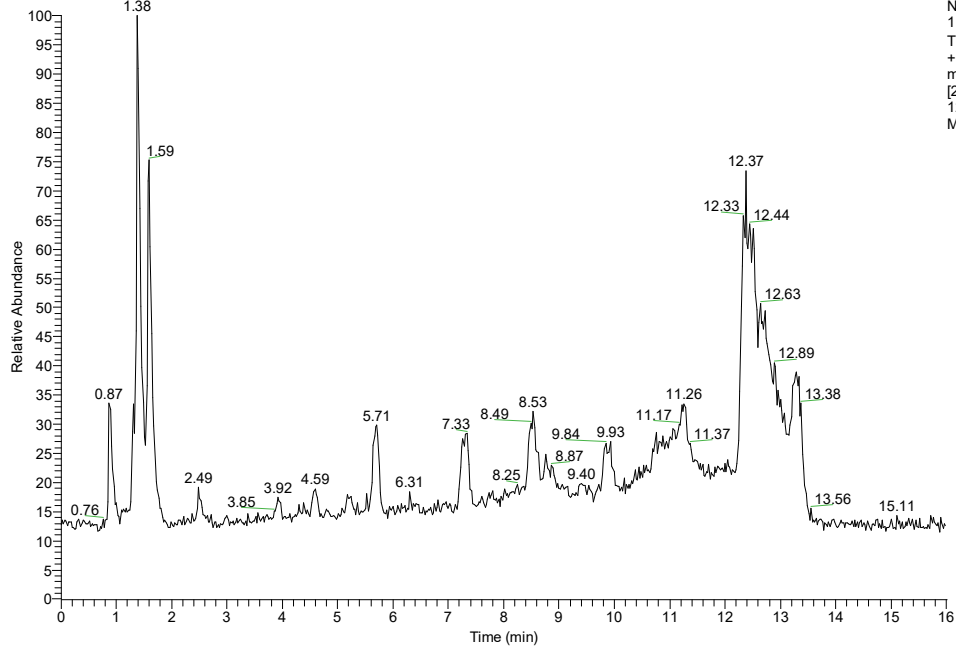
NL: ...
2.39E9
TIC F: FTMS
+ p ESI Full
ms
[200.0000-
1200.0000]
MS TT5

RT: 0.00 - 16.00



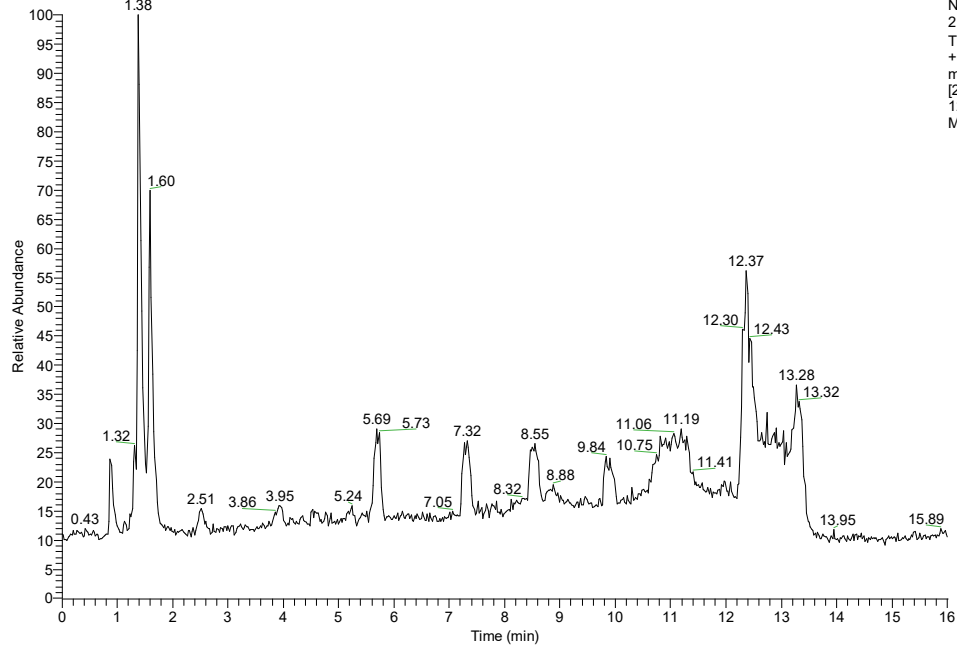
NL:
1.80E9
TIC F: FTMS
+ p ESI Full
ms
[200.0000-
1200.0000]
MS TT6

RT: 0.00 - 16.00



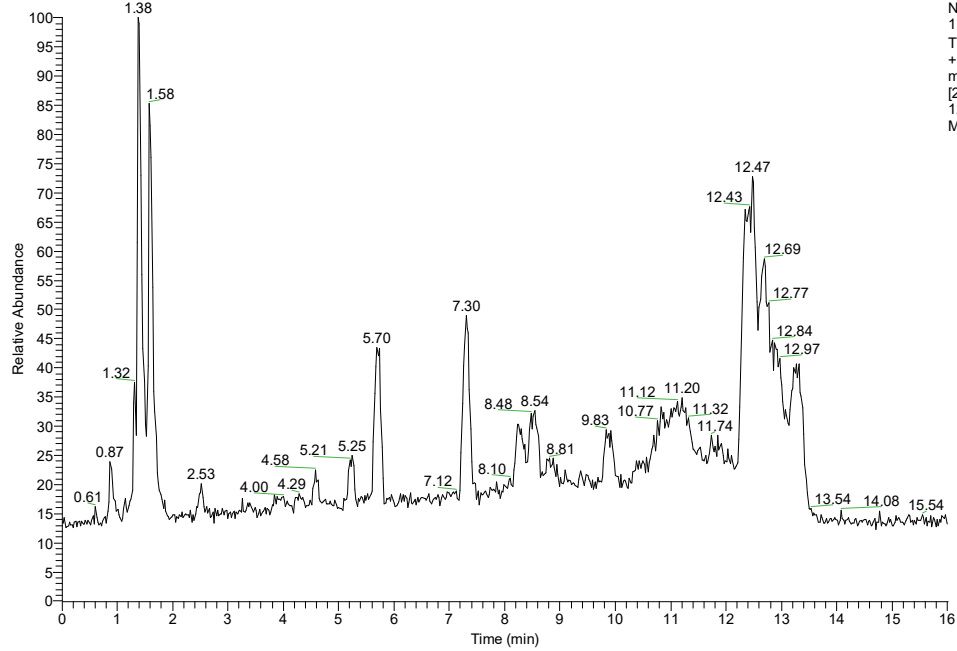
NL:
1.97E9
TIC F: FTMS
+ p ESI Full
ms
[200.0000-
1200.0000]
MS TT7

RT: 0.00 - 16.01

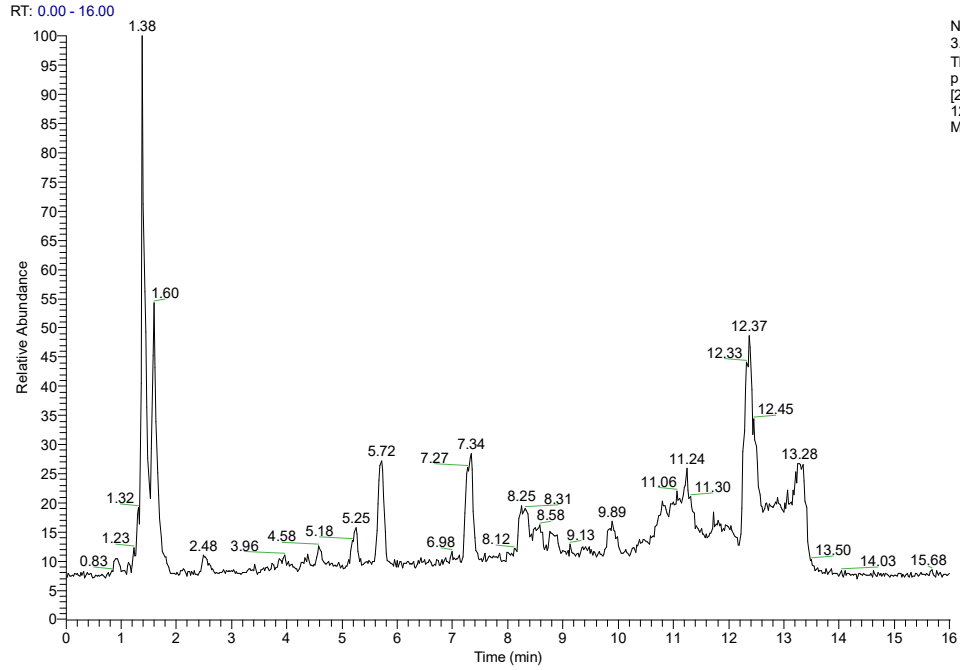


NL:
2.24E9
TIC F: FTMS
+ p ESI Full
ms
[200.0000-
1200.0000]
MS TT8

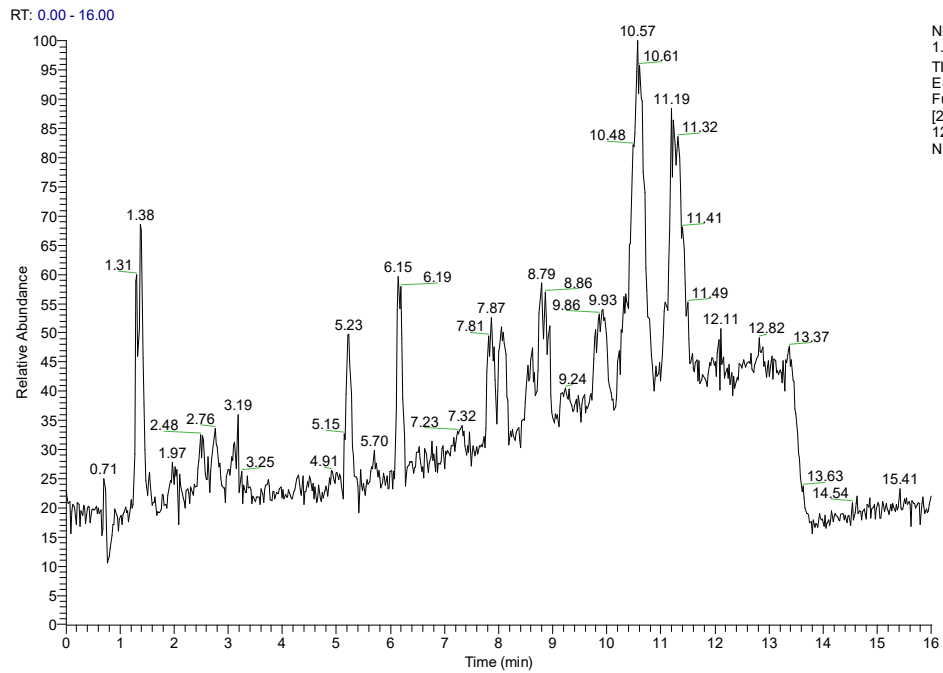
RT: 0.00 - 16.00



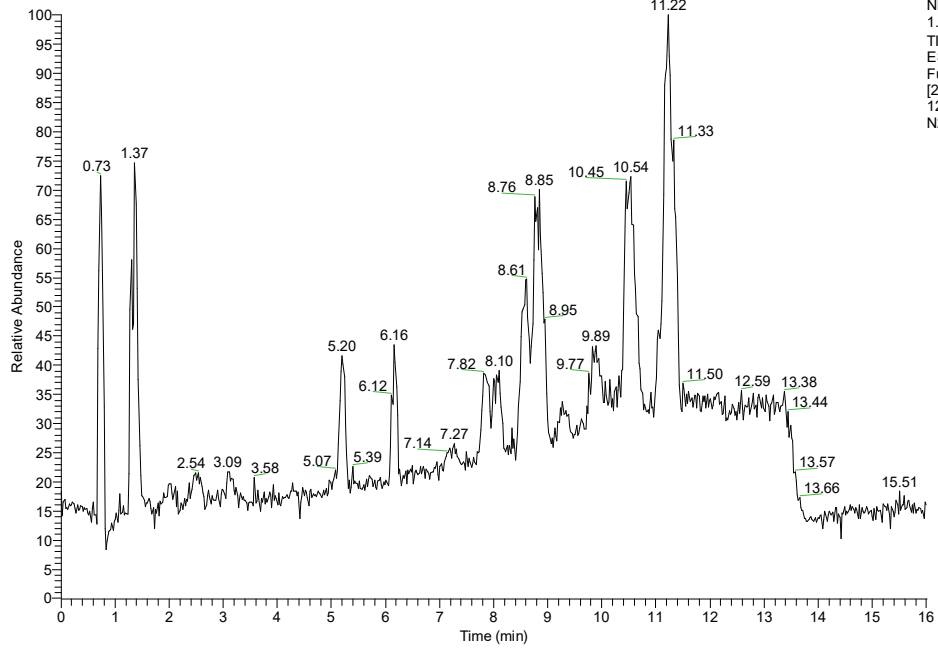
NL:
1.81E9
TIC F: FTMS
+ p ESI Full
ms
[200.0000-
1200.0000]
MS TT9



NEG

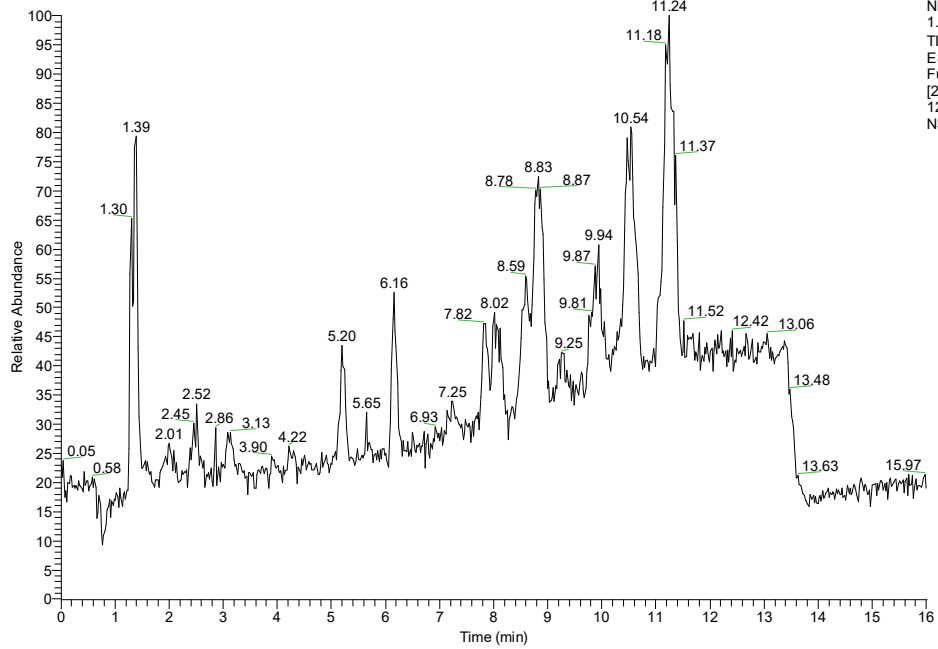


RT: 0.00 - 16.00



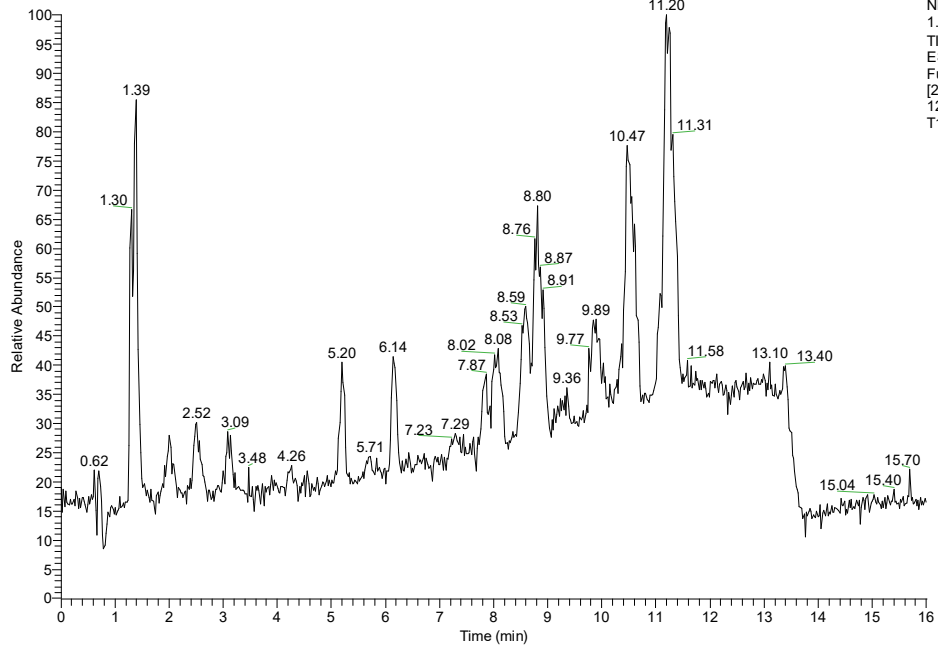
NL:
1.51E8
TIC F: FTMS - p
ESI sid=50.00
Full ms
[200.0000-
1200.0000] MS
N2_N

RT: 0.00 - 16.00



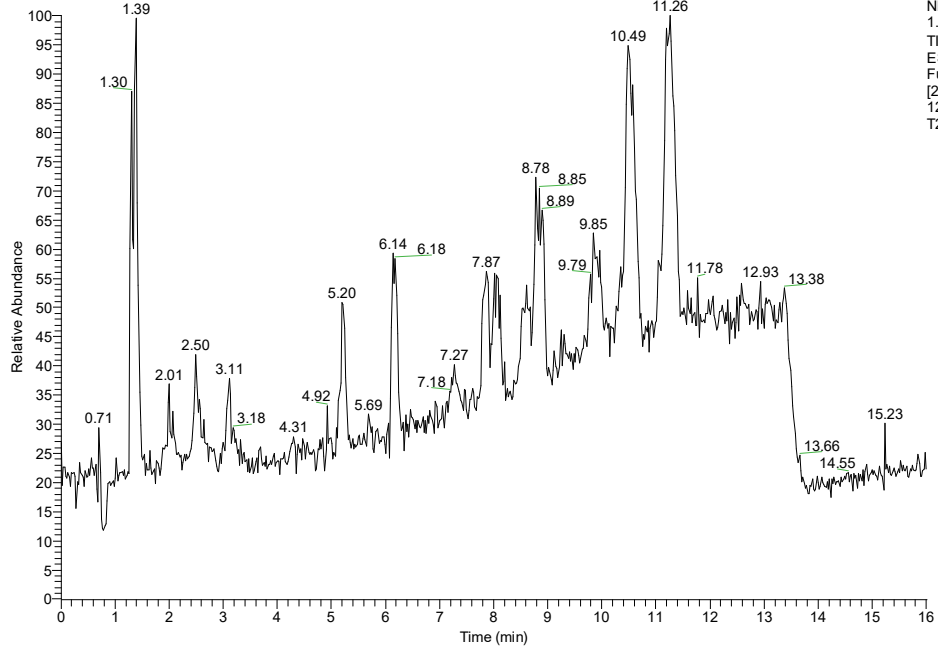
NL:
1.19E8
TIC F: FTMS - p
ESI sid=50.00
Full ms
[200.0000-
1200.0000] MS
N3_N

RT: 0.00 - 16.00



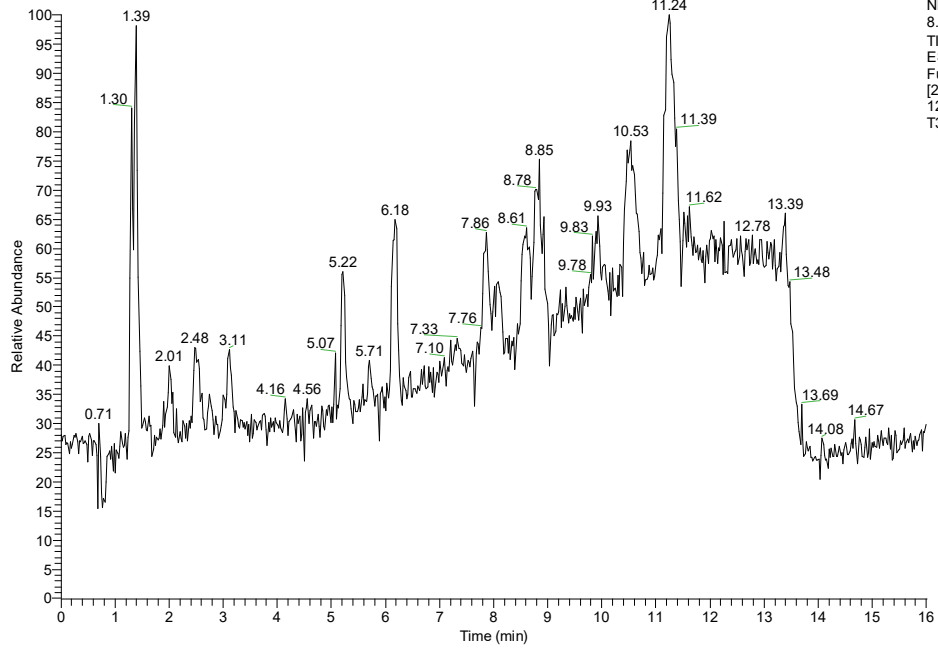
NL:
1.40E8
TIC F: FTMS - p
ESI sid=50.00
Full ms
[200.0000-
1200.0000] MS
T1_N

RT: 0.00 - 16.00



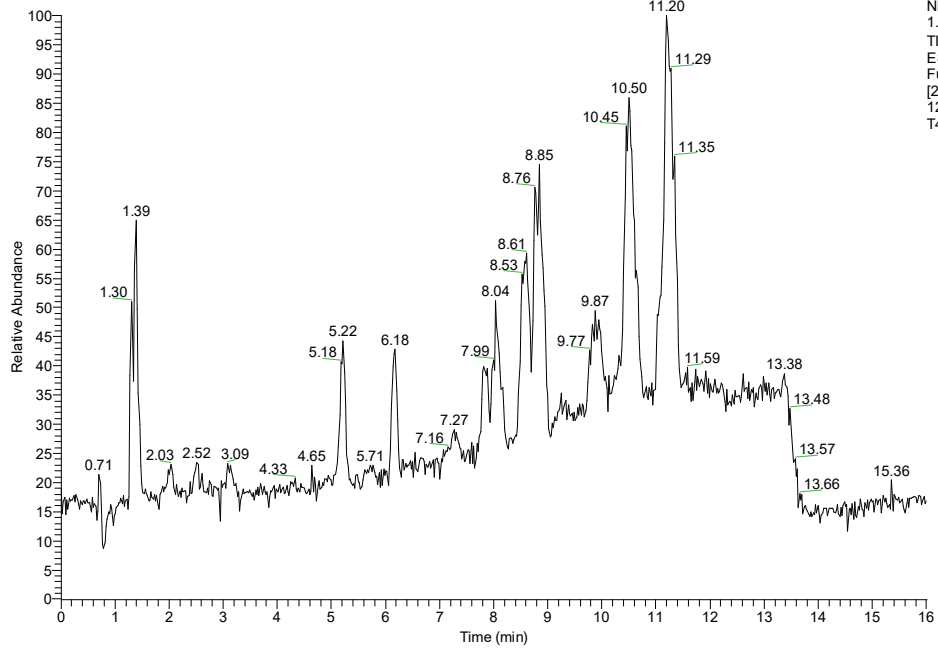
NL:
1.07E8
TIC F: FTMS - p
ESI sid=50.00
Full ms
[200.0000-
1200.0000] MS
T2_N

RT: 0.00 - 16.00



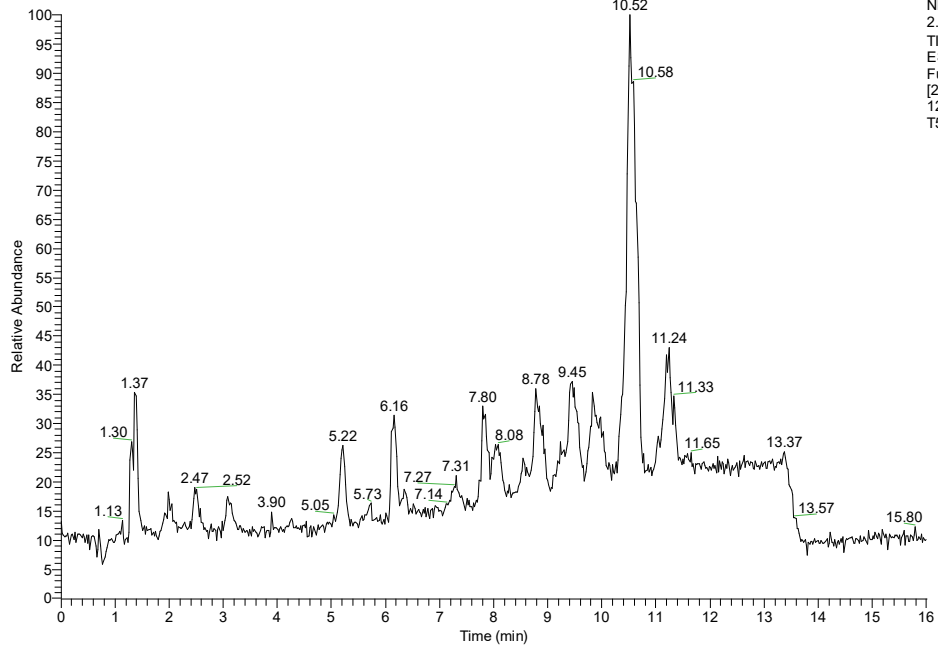
NL:
8.71E7
TIC F: FTMS - p
ESI sid=50.00
Full ms
[200.0000-
1200.0000] MS
T3_N

RT: 0.00 - 16.00



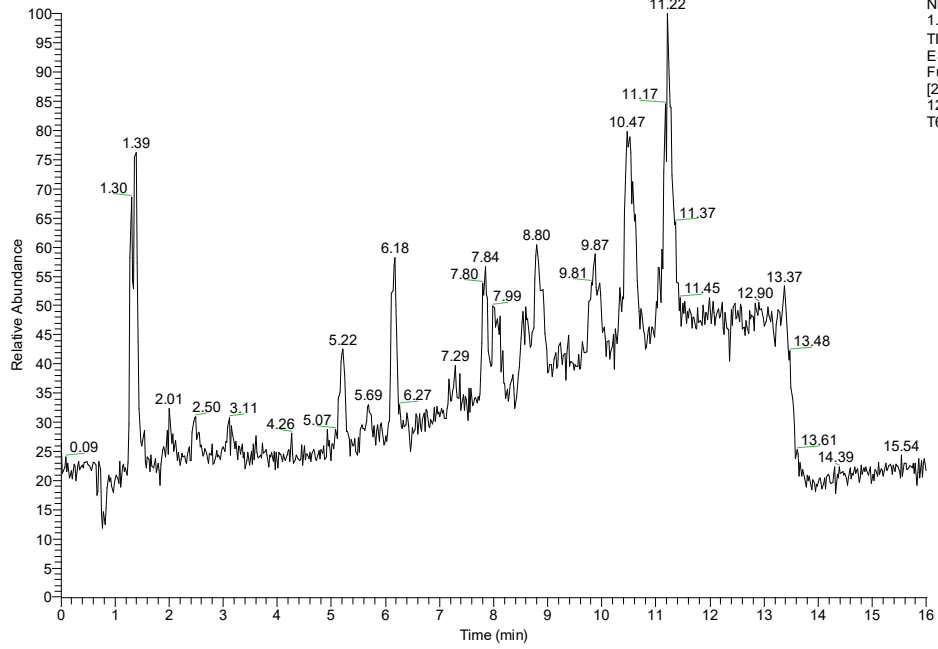
NL:
1.40E8
TIC F: FTMS - p
ESI sid=50.00
Full ms
[200.0000-
1200.0000] MS
T4_N

RT: 0.00 - 16.00



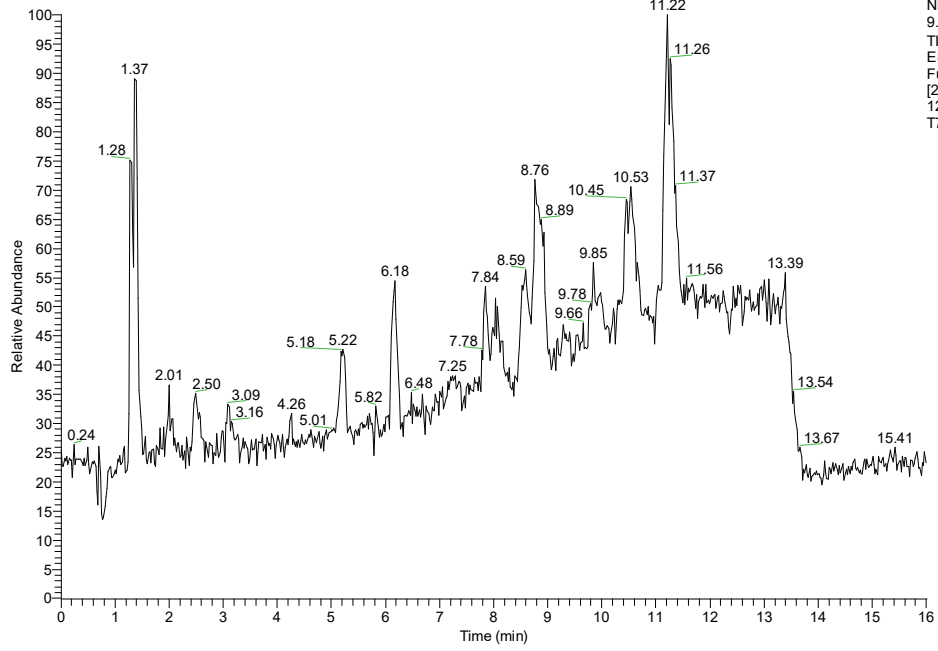
NL:
2.21E8
TIC F: FTMS - p
ESI sid=50.00
Full ms
[200.0000-
1200.0000] MS
T5_N

RT: 0.00 - 16.00

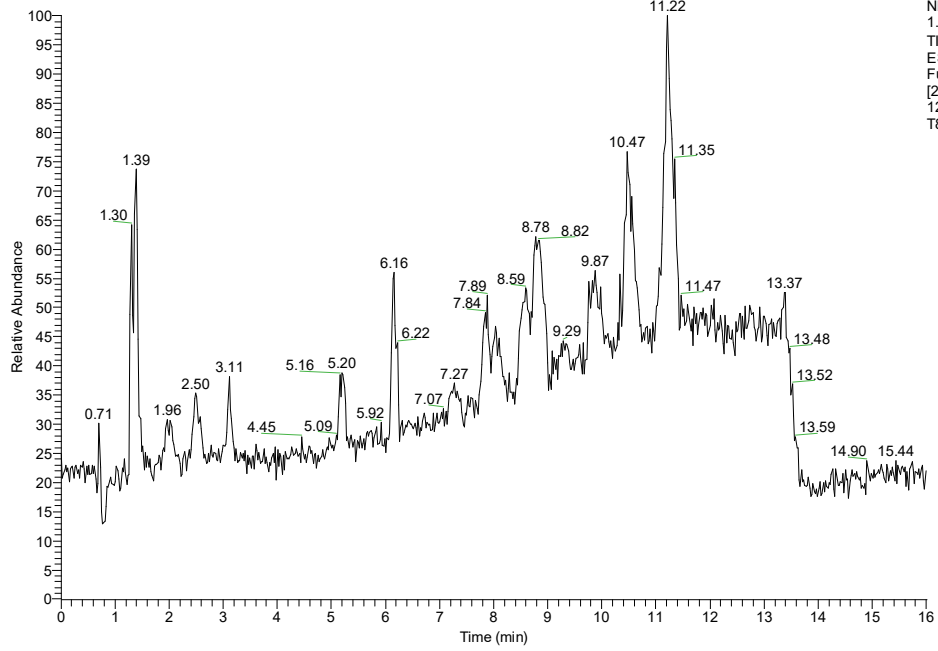


NL:
1.06E8
TIC F: FTMS - p
ESI sid=50.00
Full ms
[200.0000-
1200.0000] MS
T6_N

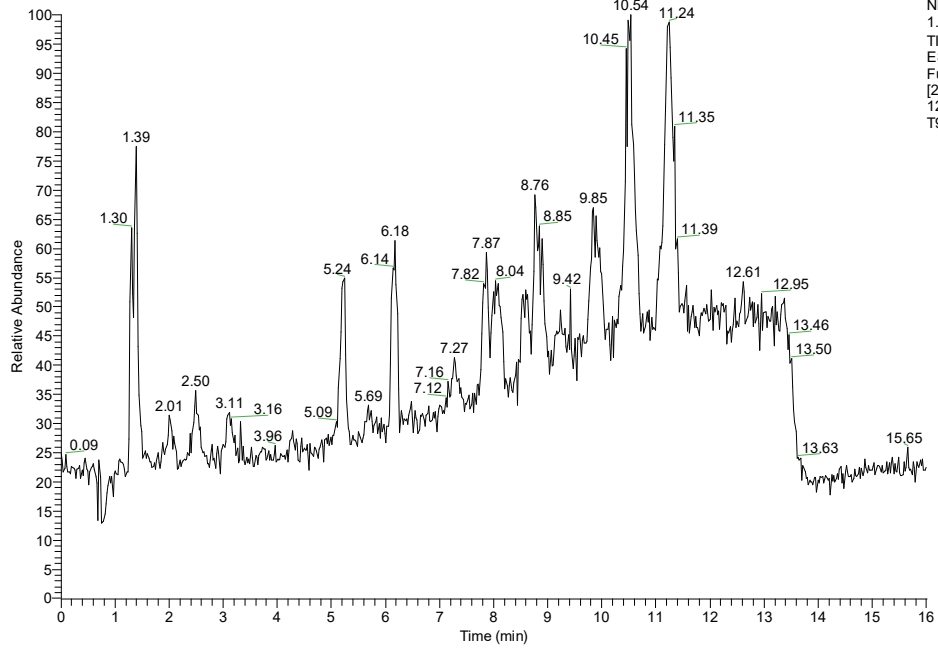
RT: 0.00 - 16.00



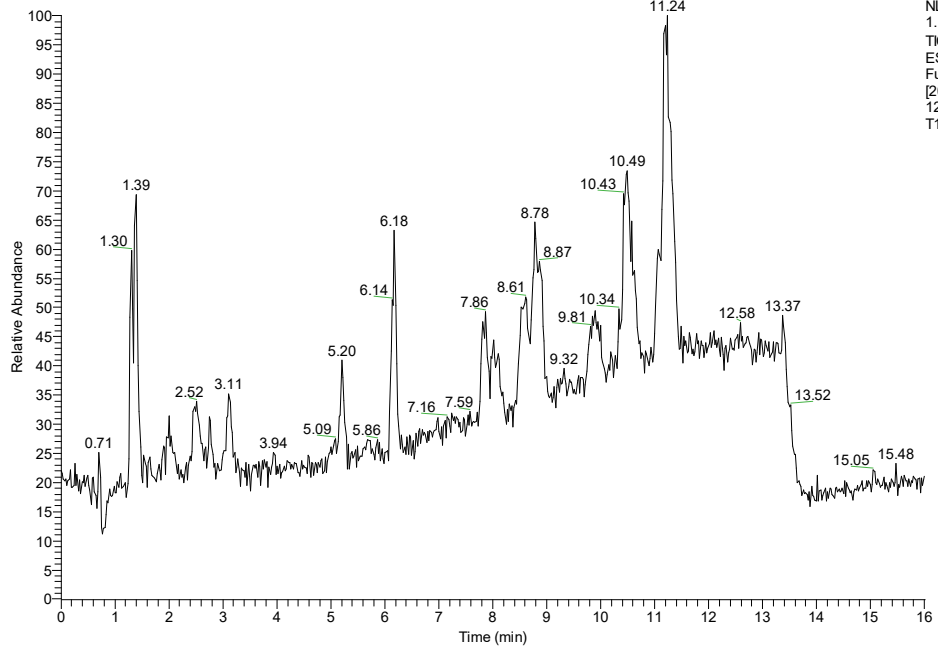
RT: 0.00 - 16.00



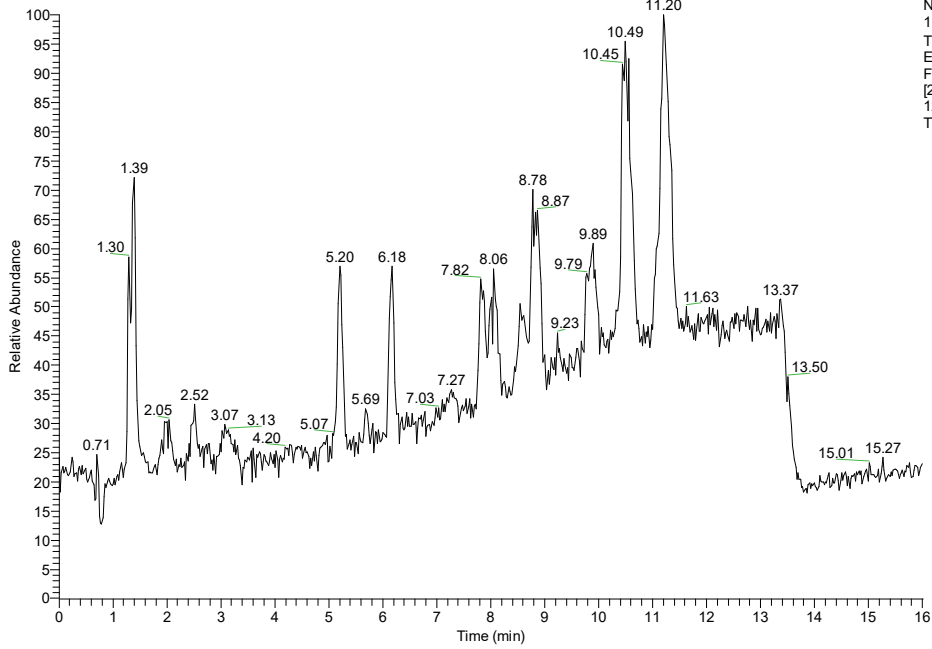
RT: 0.00 - 16.00



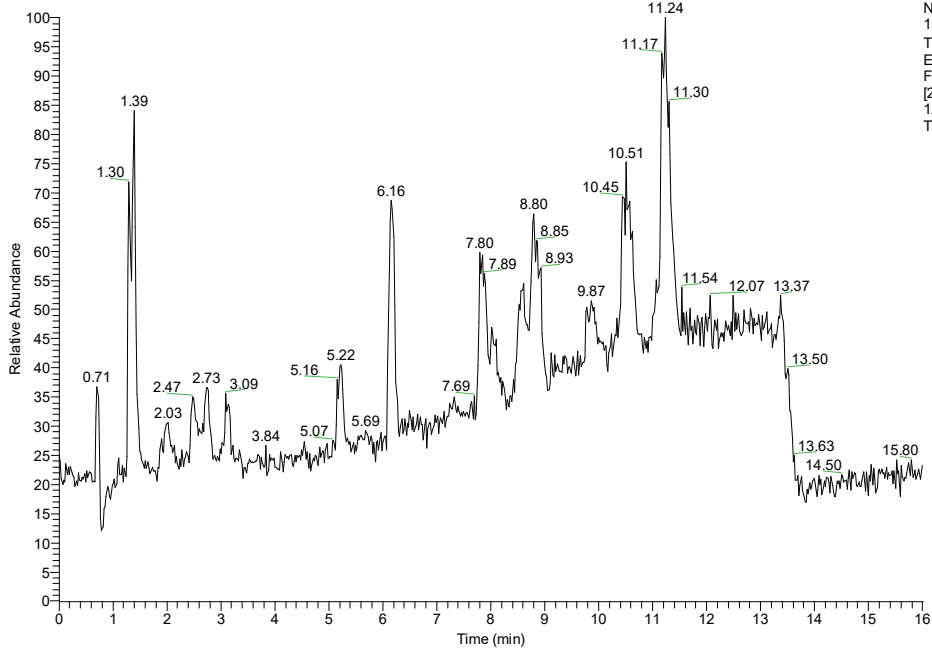
RT: 0.00 - 16.00



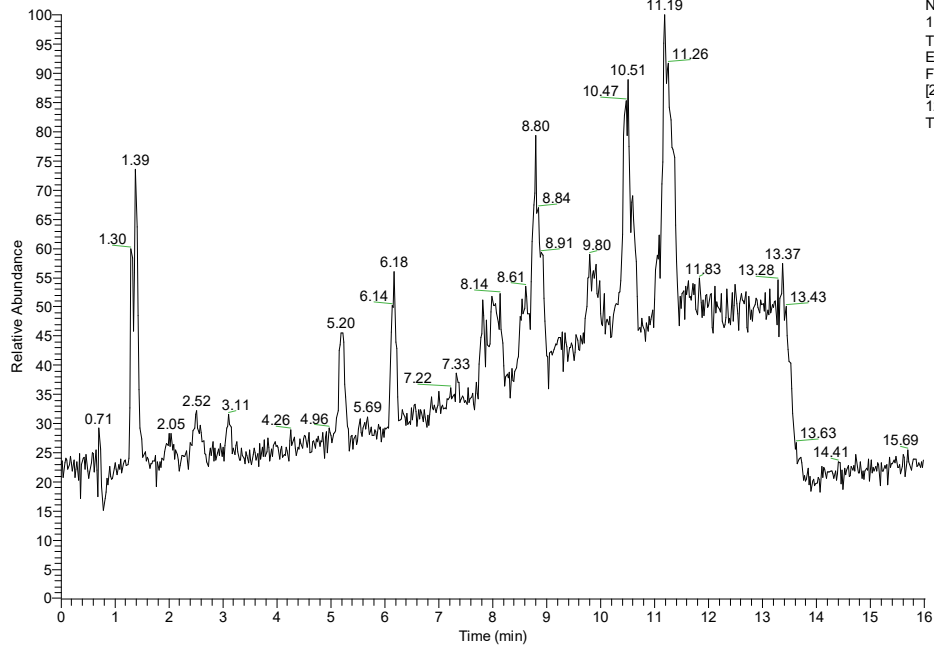
RT: 0.00 - 16.00



RT: 0.00 - 16.00

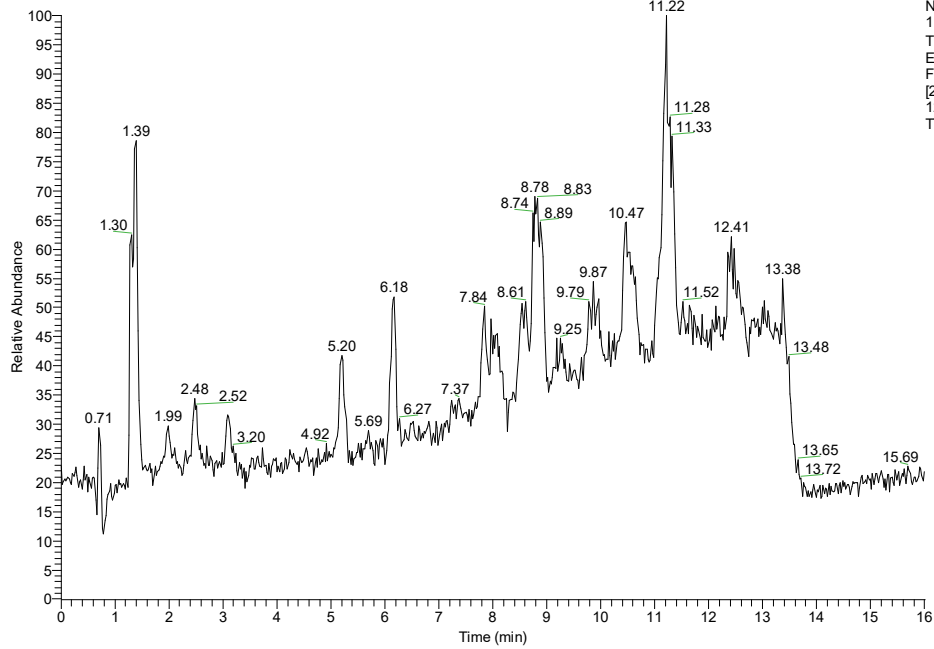


RT: 0.00 - 16.00



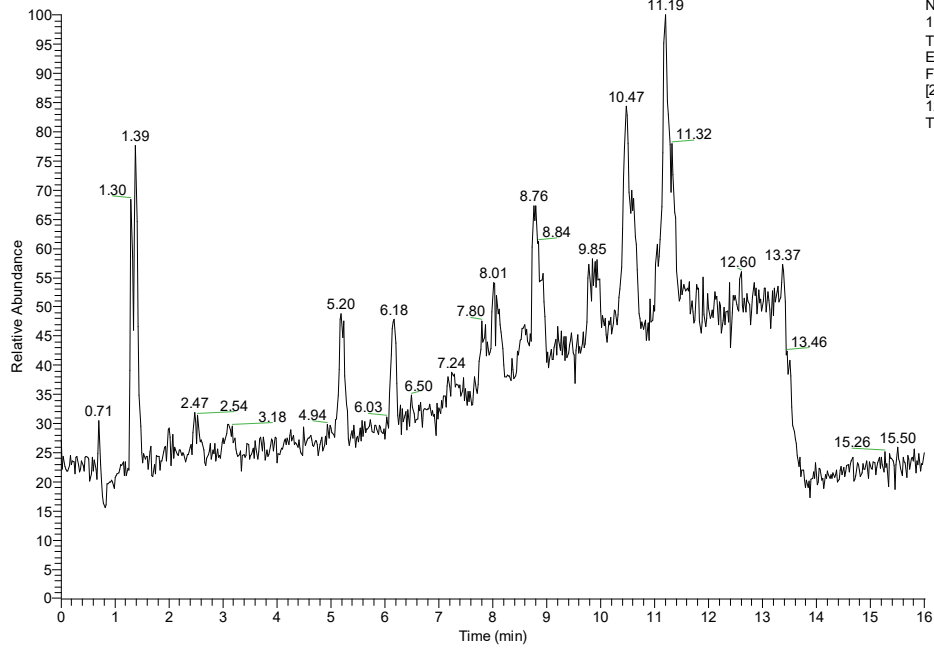
NL:
1.01E8
TIC F: FTMS - p
ESI sid=50.00
Full ms
[200.0000-
1200.0000] MS
TT3_N

RT: 0.00 - 16.00

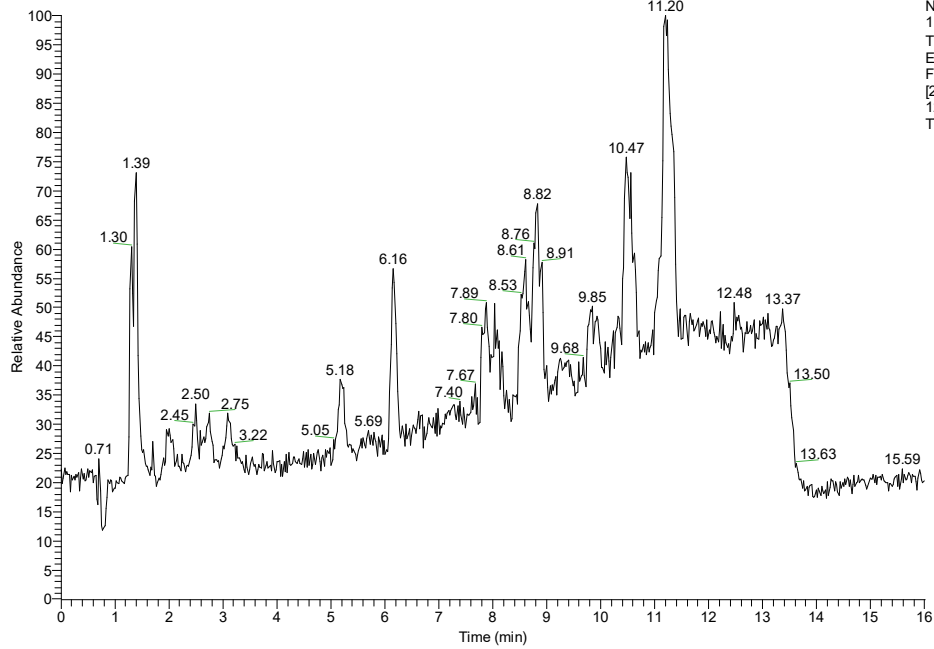


NL:
1.12E8
TIC F: FTMS - p
ESI sid=50.00
Full ms
[200.0000-
1200.0000] MS
TT4_N

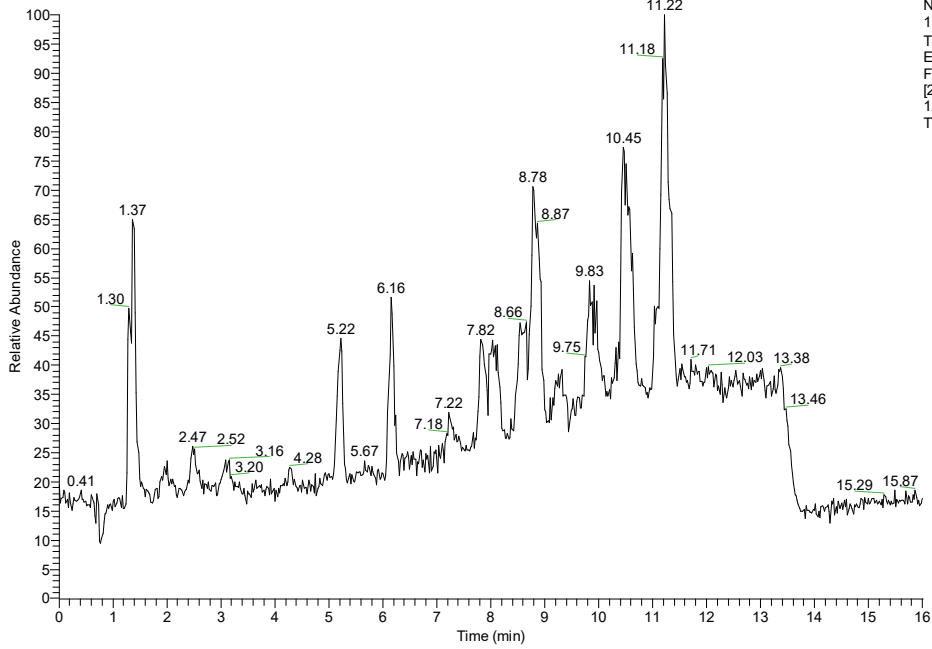
RT: 0.00 - 16.00



RT: 0.00 - 16.00

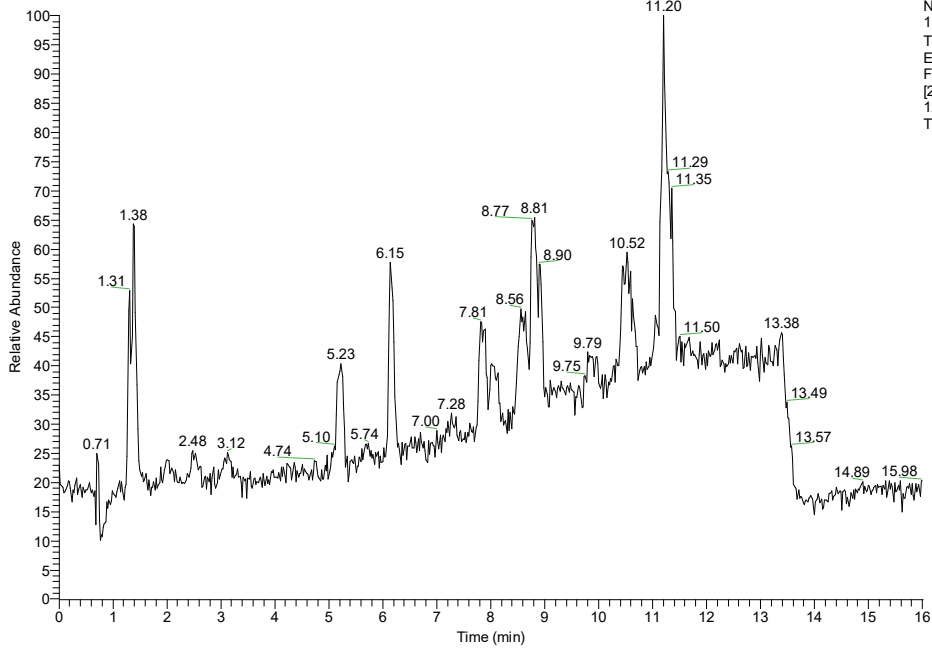


RT: 0.00 - 16.00



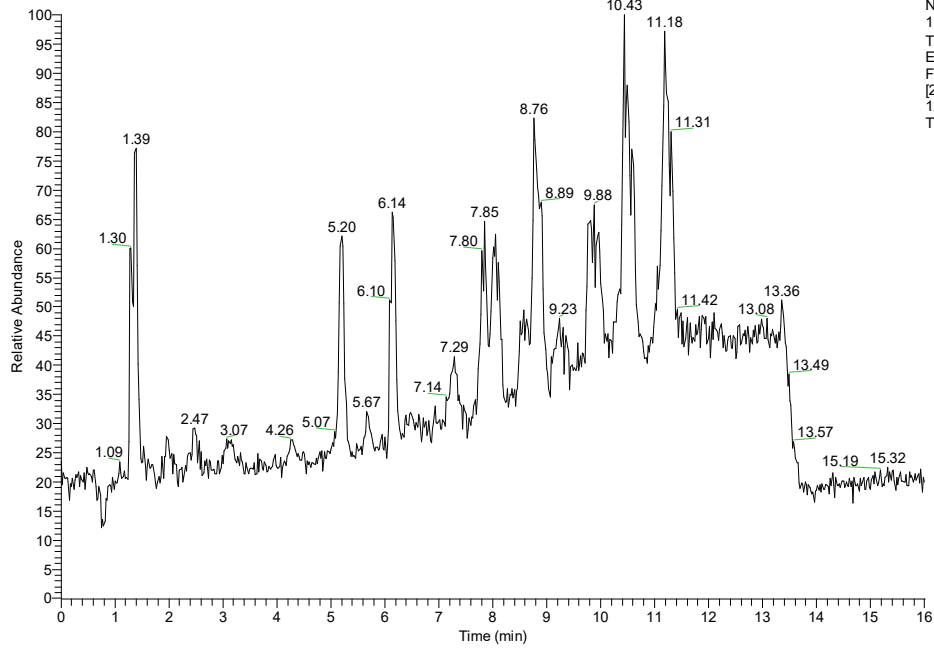
NL:
1.36E8
TIC F: FTMS - p
ESI sid=50.00
Full ms
[200.0000-
1200.0000] MS
TT7_N

RT: 0.00 - 16.00



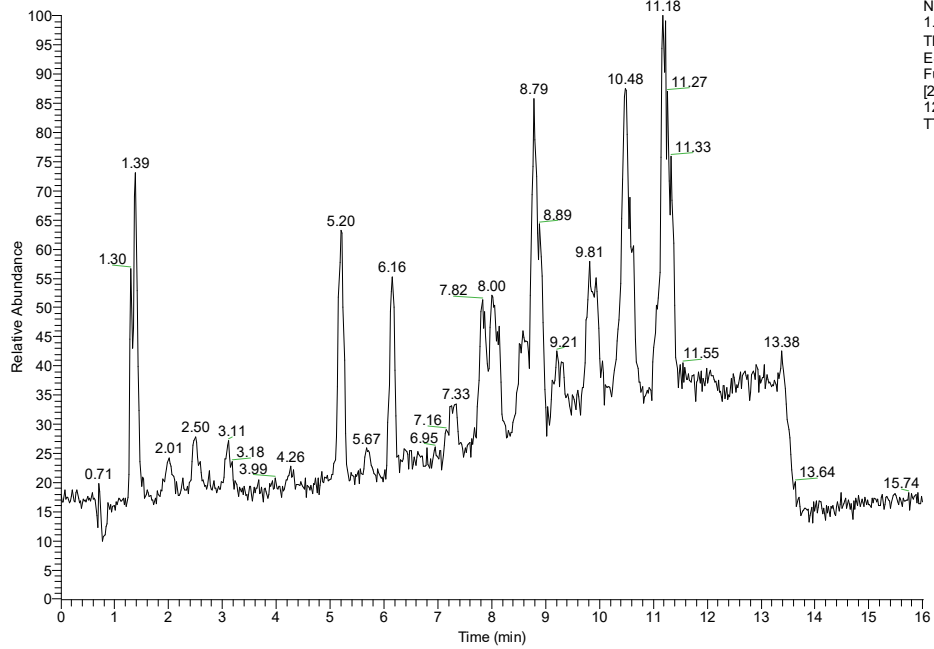
NL:
1.21E8
TIC F: FTMS - p
ESI sid=50.00
Full ms
[200.0000-
1200.0000] MS
TT8_N

RT: 0.00 - 16.00



NL:
1.12E8
TIC F: FTMS - p
ESI sid=50.00
Full ms
[200.0000-
1200.0000] MS
TT9_N

RT: 0.00 - 16.00



NL:
1.35E8
TIC F: FTMS - p
ESI sid=50.00
Full ms
[200.0000-
1200.0000] MS
TT10_N