

Figure S1. Effect of EA on cell migration and the expression levels of cell cycle-related proteins. (A and B) Western blot analysis of the epithelial-mesenchymal transition-related protein N-cadherin, fibronectin and ZEB1 in MHCC97-L and HCCLM3 cells. (C and D) Western blot analysis of the cell cycle-related proteins cyclin D1 and CDK4 in MHCC97-L and HCCLM3 cells. β -actin was used as a control. All data were shown as the mean \pm SD. * P <0.05, ** P <0.01, *** P <0.001. EA, eupalinolide A.

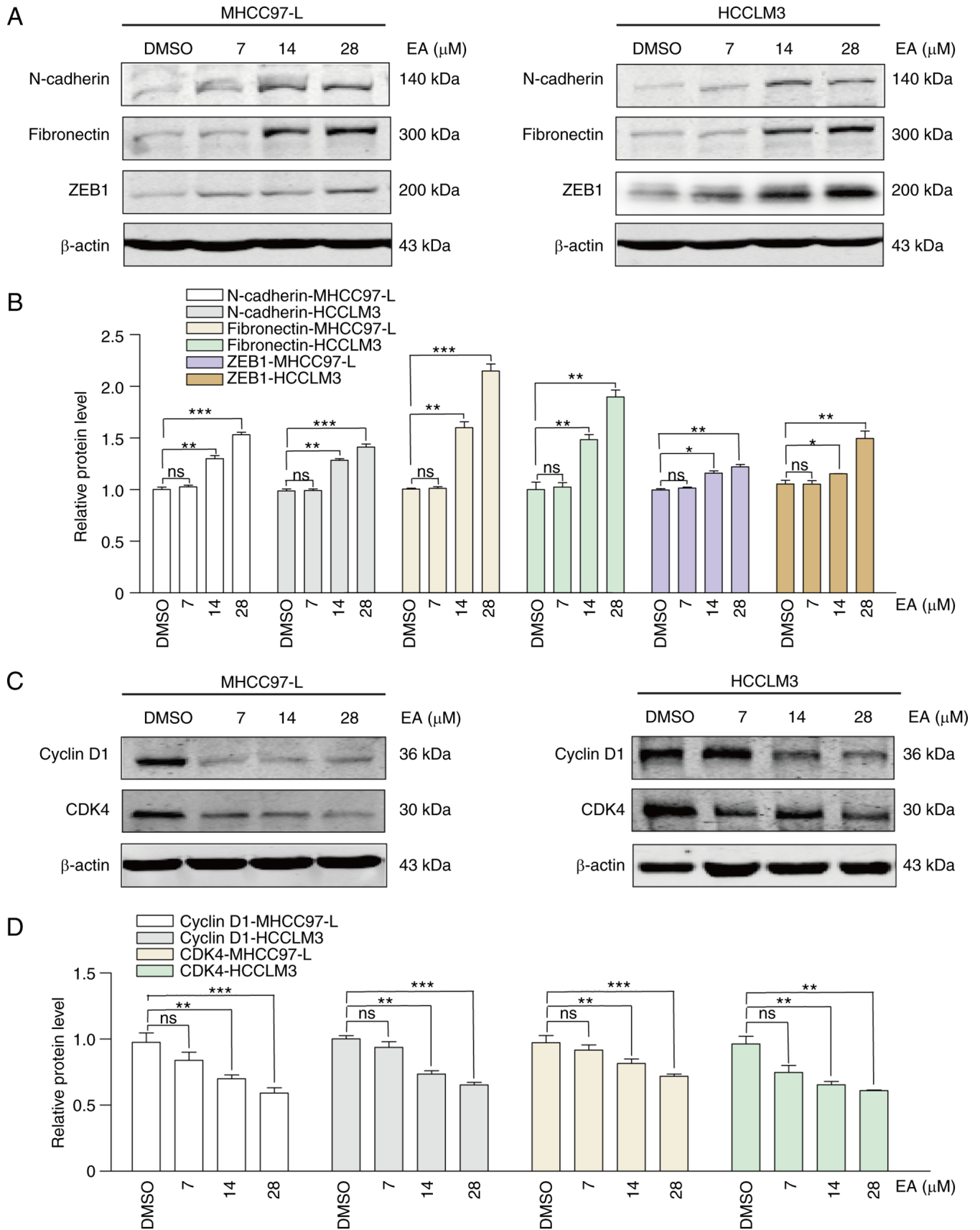


Figure S2. Statistical analysis of western blotting of MAPK signaling proteins in MHCC97-L and HCCLM3 cells, and the IC_{50} of EA in MHCC97-L and HCCLM3 cells. (A) Semi-quantification of the western blot analysis of the MAPK-related proteins in MHCC97-L and HCCLM3 cells. β -actin was used as a control. All data are presented as the mean \pm SD. *** P <0.001. (B) IC_{50} of EA in MHCC97-L and HCCLM3 cells, as determined by Cell Counting Kit 8 assay. EA, eupalinalide A; p-, phosphorylated.

