

Figure S1. Histological diagnosis of GBM. H&E staining demonstrated numerous nuclear atypia (blue arrow), mitoses (red arrow), and microvascular proliferation (black dotted area)-the main morphological features of GBM diagnosis. Immunohistochemical staining showed positive expression of GFAP, Nestin, EMA, Olig2, MGMT, p53 (mutated), EGFR, c-Myc, Ki67 and negative expression of NeuN (Neuronal marker) and Syn. GBM, glioblastoma multiforme; H&E, hematoxylin and eosin; GFAP, glial fibrillary acidic protein; MGMT, O6-methylguanine-DNA methyltransferase.

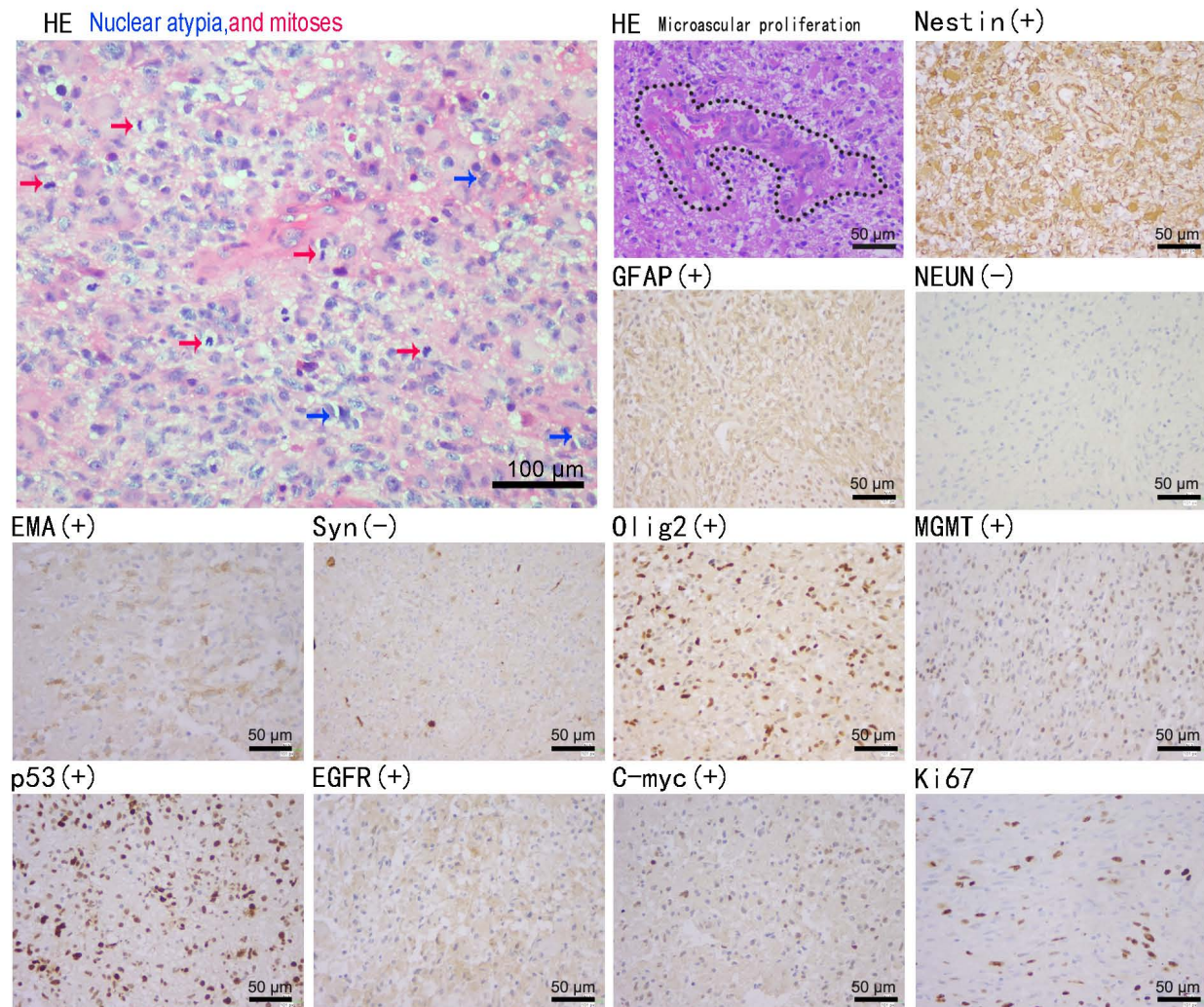


Figure S2. Glial fibrillary acidic protein staining of GWH04 cells and the cultured cells digested from grades I-III gliomas (magnification, x400; Scale bars, 50 μ m).

