

Figure S1. PANC-1 cells successfully transfected with si-BANCR and si-HIF-1 $\alpha$ . The PANC-1 cell line transfected with si-BANCR shows (A) green fluorescence indicating successful transfection and (B) BANCR expression knockdown. The PANC-1 cell line transfected with si-HIF-1 $\alpha$  (C) shows green fluorescence and (D) HIF-1 $\alpha$  mRNA expression knockdown. mRNA expression was detected using reverse transcription-quantitative PCR. \* $P < 0.05$  and \*\*\* $P < 0.001$  vs. the respective si-NC group. si, small interfering RNA; BANCR, BRAF-activated non-protein coding RNA; HIF, hypoxia-inducible factor.

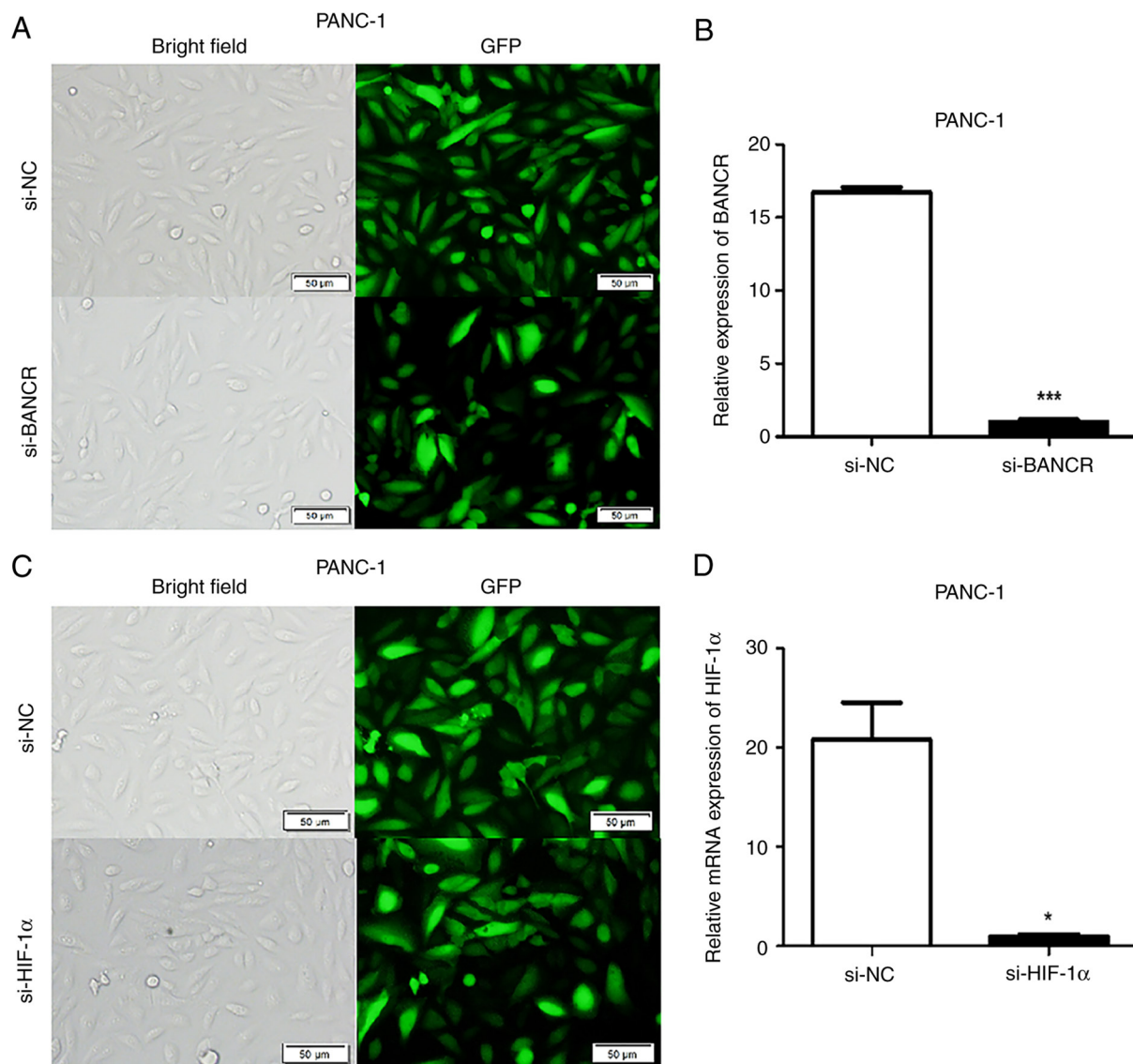


Figure S2. SW1990 cells successfully transfected with si-BANCR and si-HIF1 $\alpha$ . The SW1990 cell line transfected with si-BANCR (A) shows green fluorescence after successful transfection and (B) BANCR expression knockdown. The SW1990 cell line transfected with si-HIF1 $\alpha$  shows (C) green fluorescence and (D) HIF-1 $\alpha$  mRNA expression knockdown. mRNA expression was detected using reverse transcription-quantitative PCR. \*\* $P < 0.01$  and \*\*\* $P < 0.001$  vs. the respective si-NC group. si, small interfering RNA; BANCR, BRAF-activated non-protein coding RNA; HIF, hypoxia-inducible factor.

