

Figure S1. PPP1R14D expression has no significant effect on OS and PFS in LUSC patients. The Kaplan-Meier plotter database predicted the survival rates of LUSC patients with high and low PPP1R14D expression. (A) OS. (B) PFS. PPP1R14D, protein phosphatase 1 regulatory subunit 14D; OS, overall survival; PFS, progression-free survival; LUSC, lung squamous cell carcinoma; HR, hazard ratio.

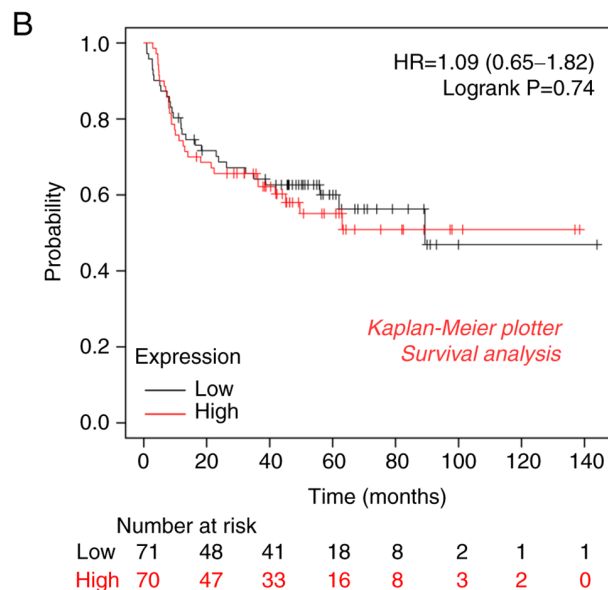
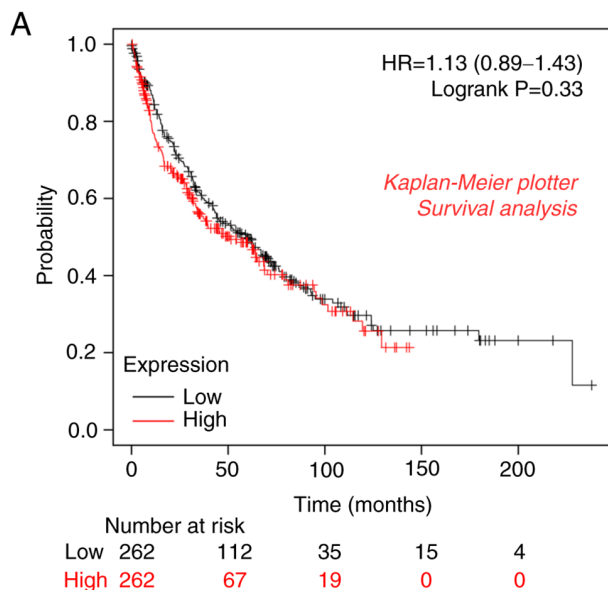


Figure S2. The efficiency of shRNA lentivirus infection in A549 and PC-9 cells was observed under a fluorescence microscope (scale bar, 100  $\mu\text{m}$ ). sh-short hairpin; PPP1R14D, protein phosphatase 1 regulatory subunit 14D.

