

Figure S1. HSP20 expression in breast cancer tissues. (A) IHC scores of HSP20 expression in 53 tumor samples. (B) Representative images of high and low HSP20 expression. Scale bar, 50 μ m. HSP20, heat shock protein 20; IHC, immunohistochemistry.

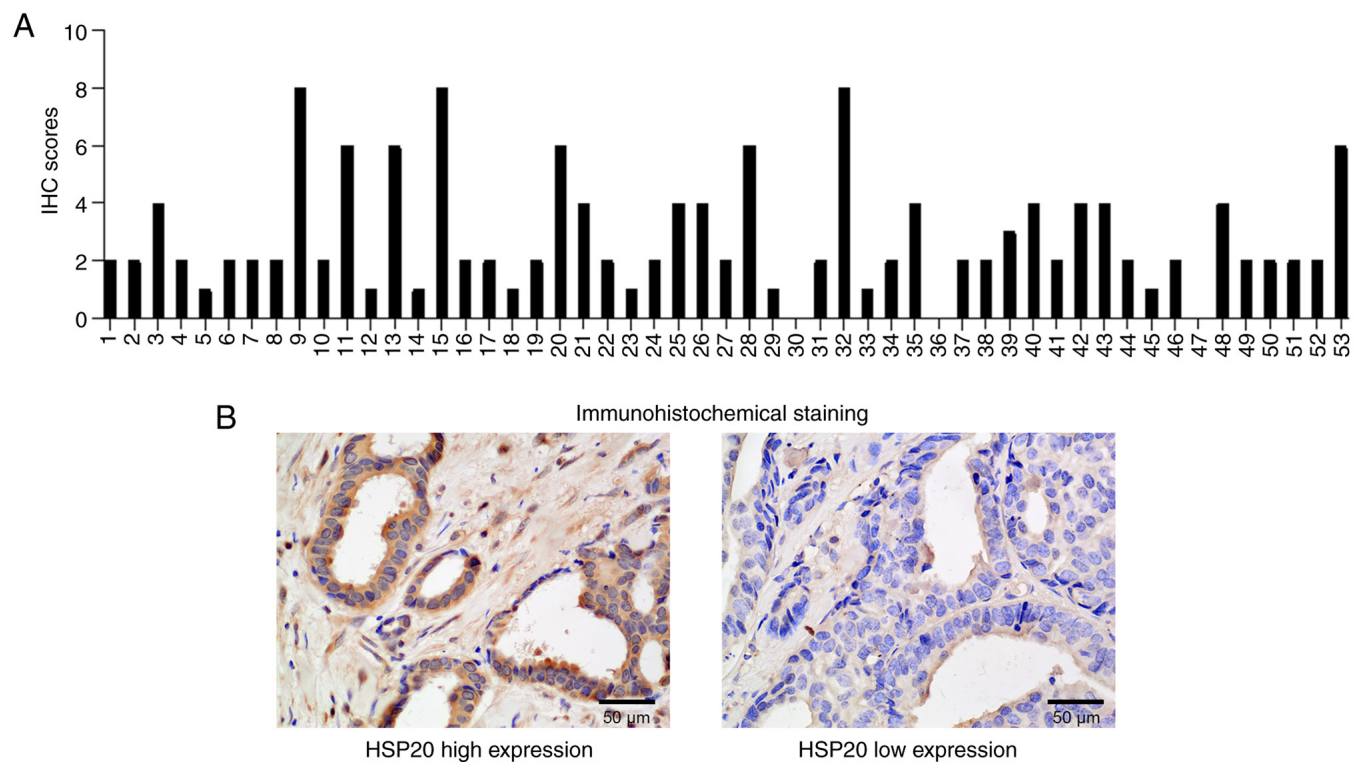


Figure S2. HSP20 knockdown aggravates breast cancer cell proliferation and migration via activation of the AKT and MAPK pathways. (A) Knockdown efficiency of HSP20 in MCF-7 cells was measured. (B) MCF-7 cells transfected with si-HSP20-1/2 or si-NC were cultured in 96-well plates for 0-72 h. Cell Counting Kit-8 detection was used to assess cell proliferation. (C) Changes in cell migration of HSP20-silenced MCF-7 cells. Microscope magnification, x100. (D) Changes in the levels of p-AKT, AKT, p-ERK, ERK, p-JNK, JNK, p-p38 and p38 in HSP20-silenced MCF-7 cells. Data are presented as the mean \pm SD. * P <0.05; *** P <0.001. control, untransfected cells; HSP20, heat shock protein 20; NC, negative control; OD, optical density; p-, phosphorylated; si, small interfering RNA.

