

Figure S1. Rg1 treatment decreases the expression of Beclin1 in APP/PS1 mice (magnification, x400; scale bar, 40  $\mu$ m). (A) The expression of Beclin1 in the cortex and hippocampus CA1. (B) The mean density Beclin1 in cortex. (C) The mean density Beclin1 in CA1. Results are expressed as the mean  $\pm$  SD (n=4). \*P<0.05 and \*\*P<0.01 vs. the WT-9M group; ##P<0.01 vs. the APP/PS1-9M group. Rg1, Ginsenoside Rg1.

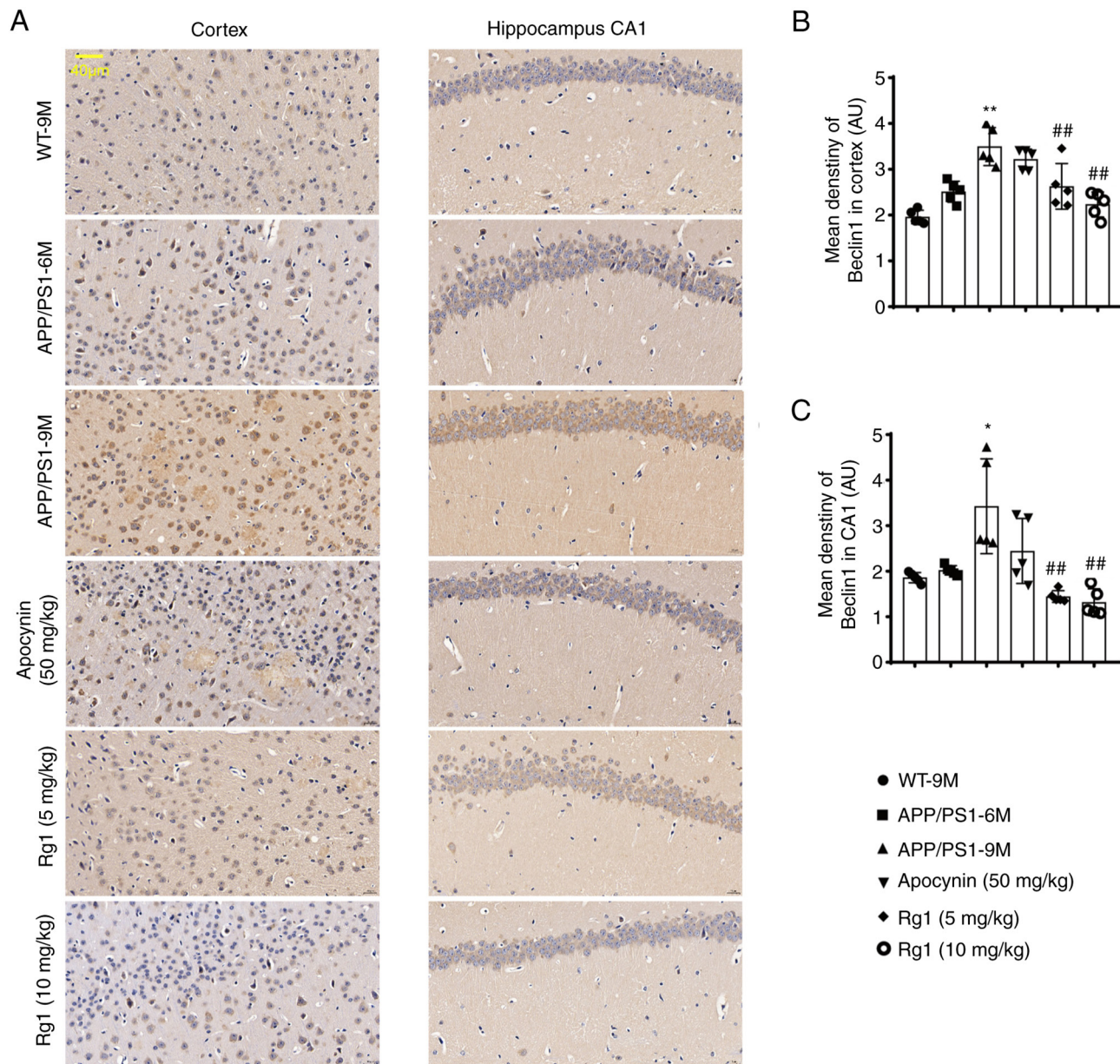


Figure S2. Rg1 treatment decreases the expression of LC3 in APP/PS1 mice (magnification, x400; scale bar, 40  $\mu$ m). (A) The expression of LC3 in the cortex and hippocampus CA1. (B) The mean density LC3 in cortex. (C) The mean density LC3 in CA1. Results are expressed as the mean  $\pm$  SD (n=4). \*\*P<0.01 vs. the WT-9M group; #P<0.05 and ##P<0.01 vs. the APP/PS1-9M group. Rg1, Ginsenoside Rg1.

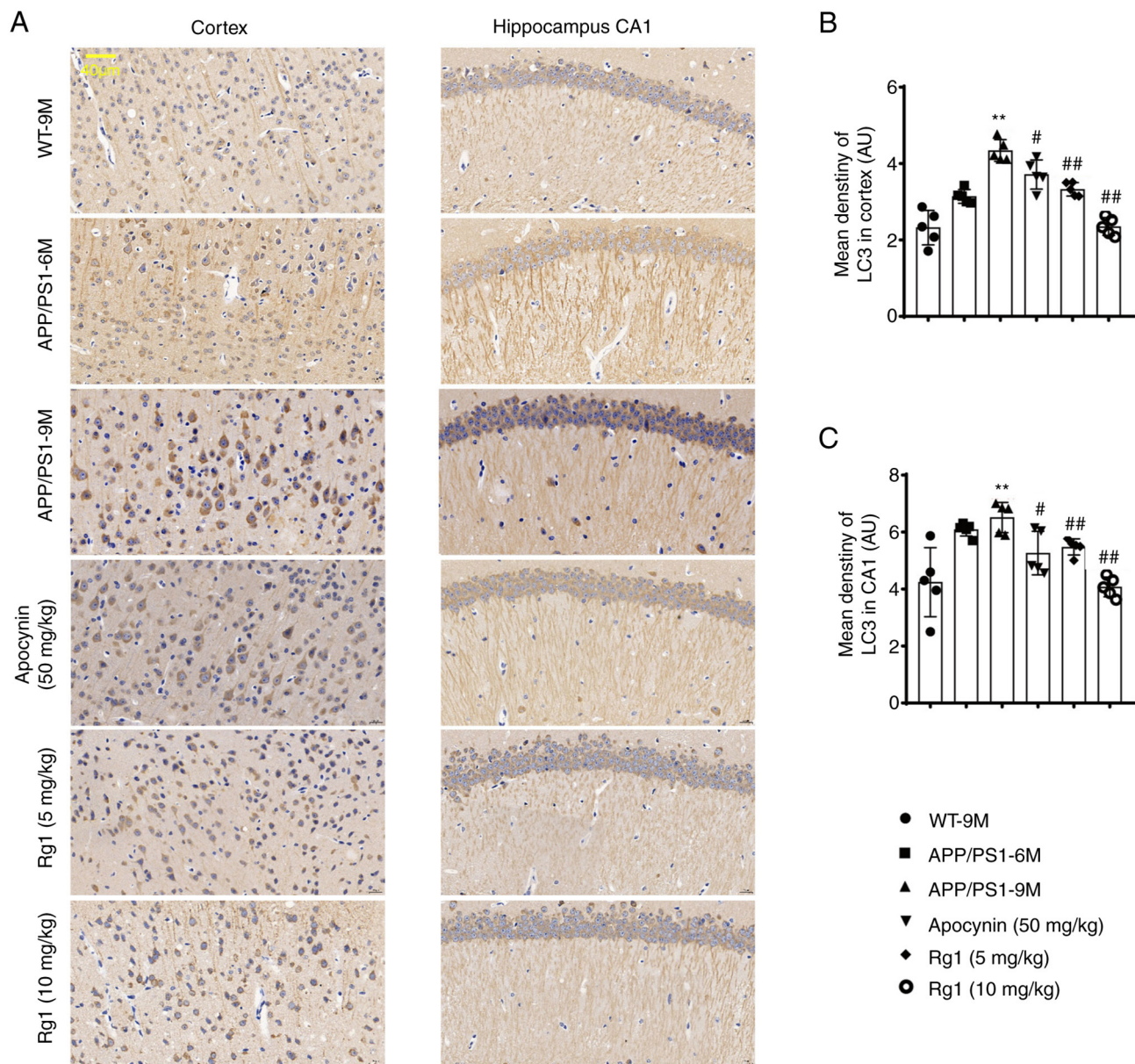


Figure S3. Molecular docking results of Rg1 and NLRP1. (A) The cartoon form. (B) The surface form. (C) The detailed binding site and hydrogen bonds. Rg1, Ginsenoside Rg1.

