

Figure S1. Proof of successful transfection for si-CBP. PANC-1 and SW1990 cells were transfected with CBP siRNA or siNC. CBP protein expression was analyzed by western blotting. siRNA/si, small interfering RNA; CBP, CREB binding protein; NC, negative control.

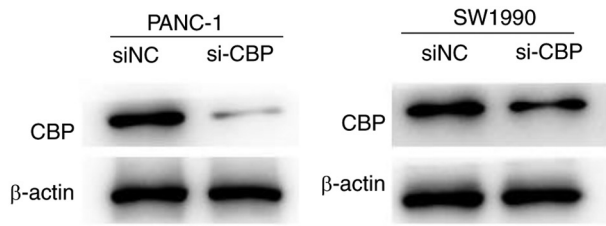


Figure S2. Proof of successful transfection for shASF1B. PANC-1 cells were transfected with shASF1B or shNC. ASF1B protein expression was analyzed by western blotting. ASF1B, anti-silencing function 1B; NC, negative control; sh, short hairpin RNA.

