

Figure S1. Comparison of prognosis between irAE-C and irAE-D groups in patients with ESCC. (A) The Kaplan-Meier survival curve of OS for patients with irAE-C and irAE-D. (B) The Kaplan-Meier survival curve of PFS for patients with irAE-C and irAE-D. irAE-C group, the group with grade 3 and higher irAEs; irAE-D group, the group with grade 1 and grade 2 irAEs; irAEs, immune-related adverse events; ESCC, esophageal squamous cell carcinoma; OS, overall survival; PFS, progression-free survival; cum, cumulative.

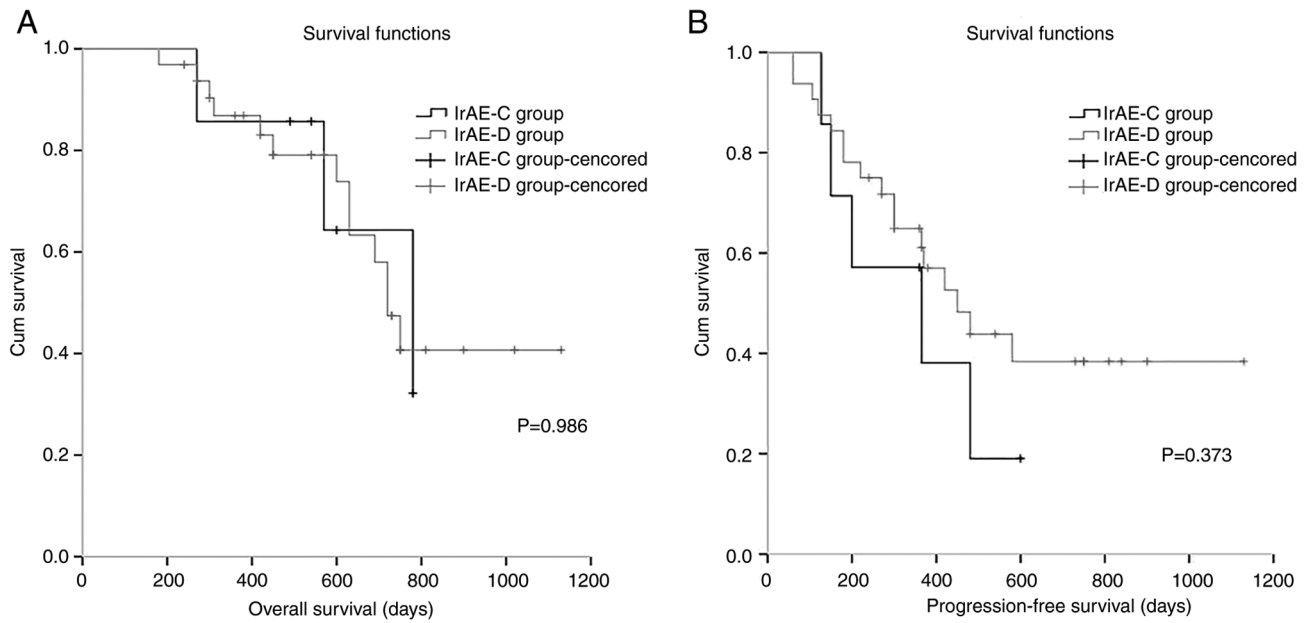


Figure S2. Comparison of prognosis between single-site and multiple-site groups in patients with ESCC who developed irAEs. (A) The Kaplan-Meier survival curve of OS for patients with single-site and multiple-site groups. (B) The Kaplan-Meier survival curve of PFS for patients with single-site and multiple-site groups. Single-site group, the group with one type of irAE; multiple-site group, the group with more than one type of irAEs; irAEs, immune-related adverse events; ESCC, esophageal squamous cell carcinoma; OS, overall survival; PFS, progression-free survival; cum, cumulative.

