

Figure S1. Tumor cells were diffusely positive for Bcl-2 as determined by immunohistochemistry (magnification, x100).

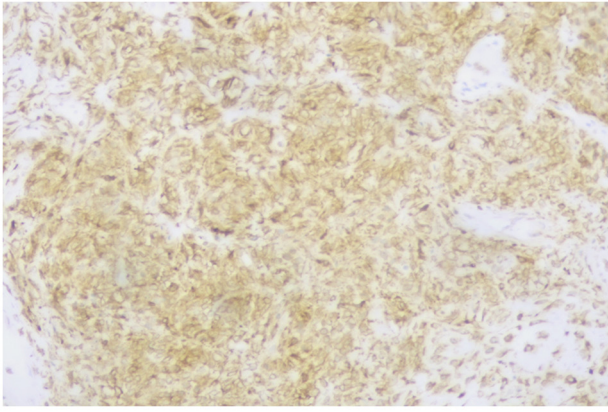


Figure S2. Tumor cells were diffusely positive for CD34 as determined by immunohistochemistry (magnification, x100).

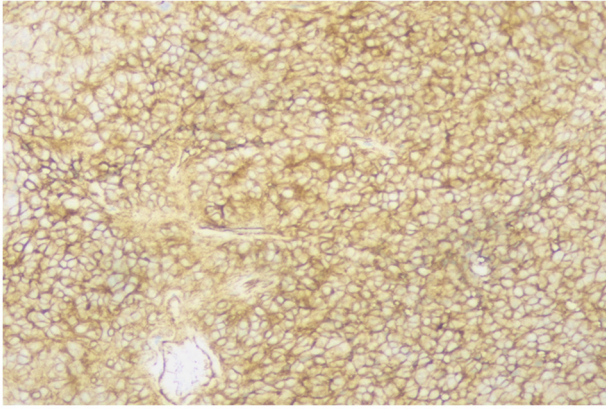


Figure S3. Tumor cells were diffusely positive for CD99 as determined by immunohistochemistry (magnification, x100).

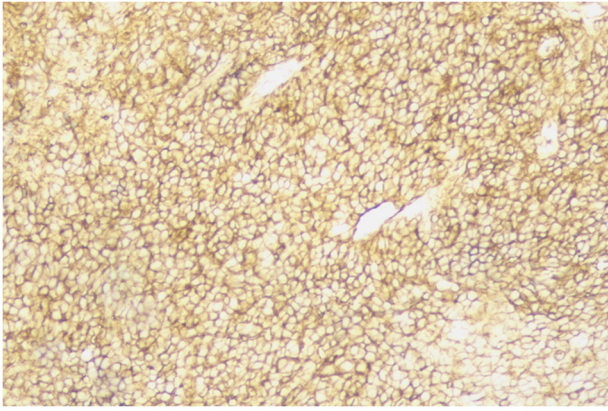


Figure S4. Tumor cells were focally positive for CDK4 as determined by immunohistochemistry (magnification, x100).

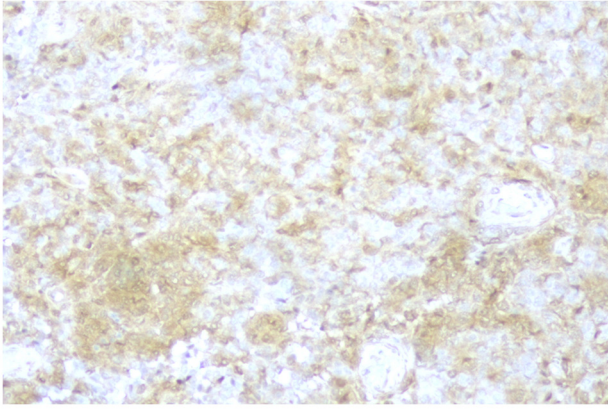


Figure S5. Tumor cells were focally positive for p16 as determined by immunohistochemistry (magnification, x100).

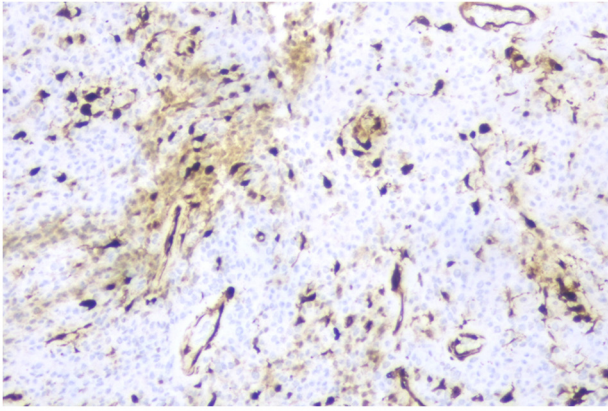


Figure S6. Tumor cells expressed wild-type p53 as determined by immunohistochemistry (magnification, x100).

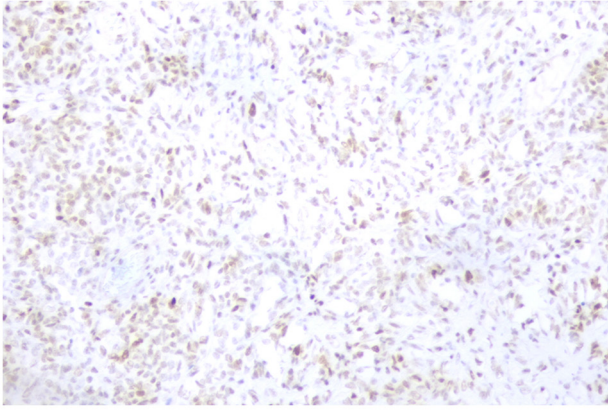


Figure S7. Ki-67 index of tumor cells was ~20% as determined by immunohistochemistry (magnification, x100).

