

Figure S1. Expression level of the DPY30 protein in 57 paired ESCA and paracancerous tissues. (A) Positive area; (B) mean density; (C) area density. DPY30, dpy-30 homolog; ESCA, esophageal cancer. ***P<0.001.

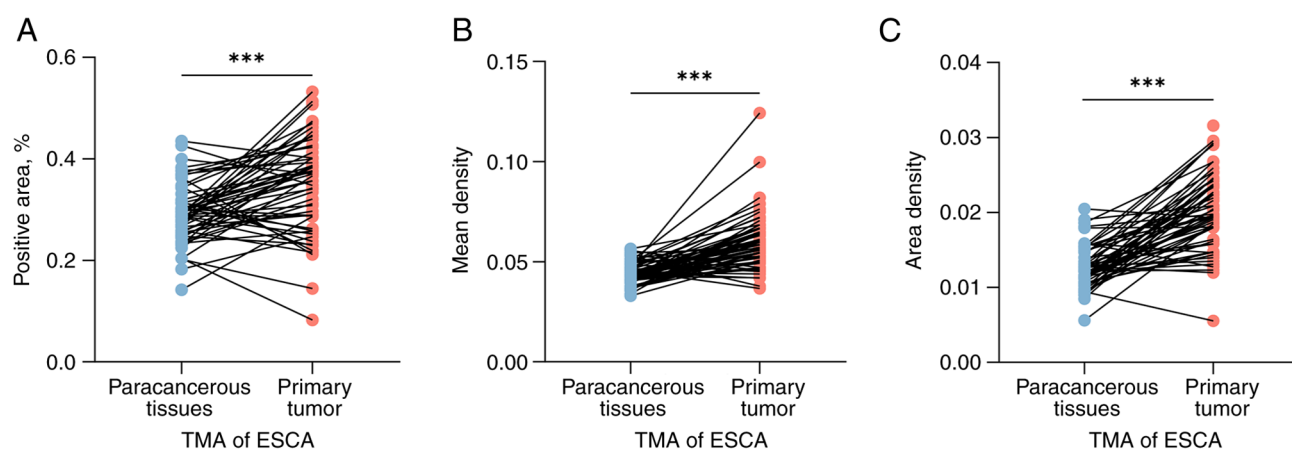


Figure S2. The negative and positive correlation of the top six genes with DPY30 among the co-expressed genes in ESCA. The positive correlation between DPY30 and (A) SF3B6, (B) DGUOK, (C) CRIPT, (D) SNRPG, (E) SCNM1, (F) TPRKB. The negative correlation between DPY30 and (G) AKAP13, (H) ZNF460, (I) HERC1, (J) SECISBP2L, (K) BMP2K and (L) RAPH1. DPY30, dpy-30 homolog; ESCA, esophageal cancer; FPKM, fragments per kilobase per million.

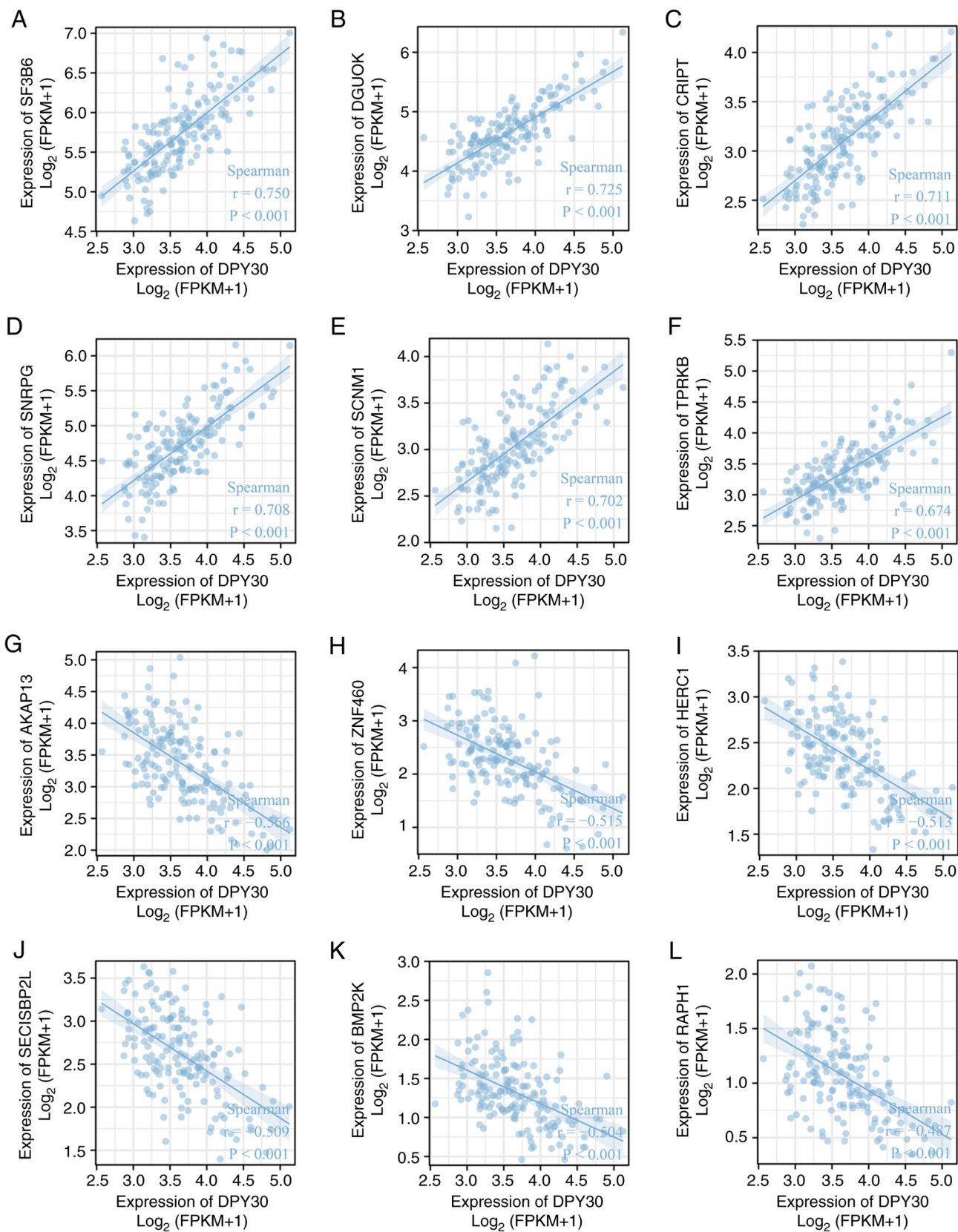


Figure S3. DPY30 expression was correlated with immune infiltrated cells in ESCA using Spearman's correlation analysis. DPY30, dpy-30 homolog; ESCA, esophageal cancer.

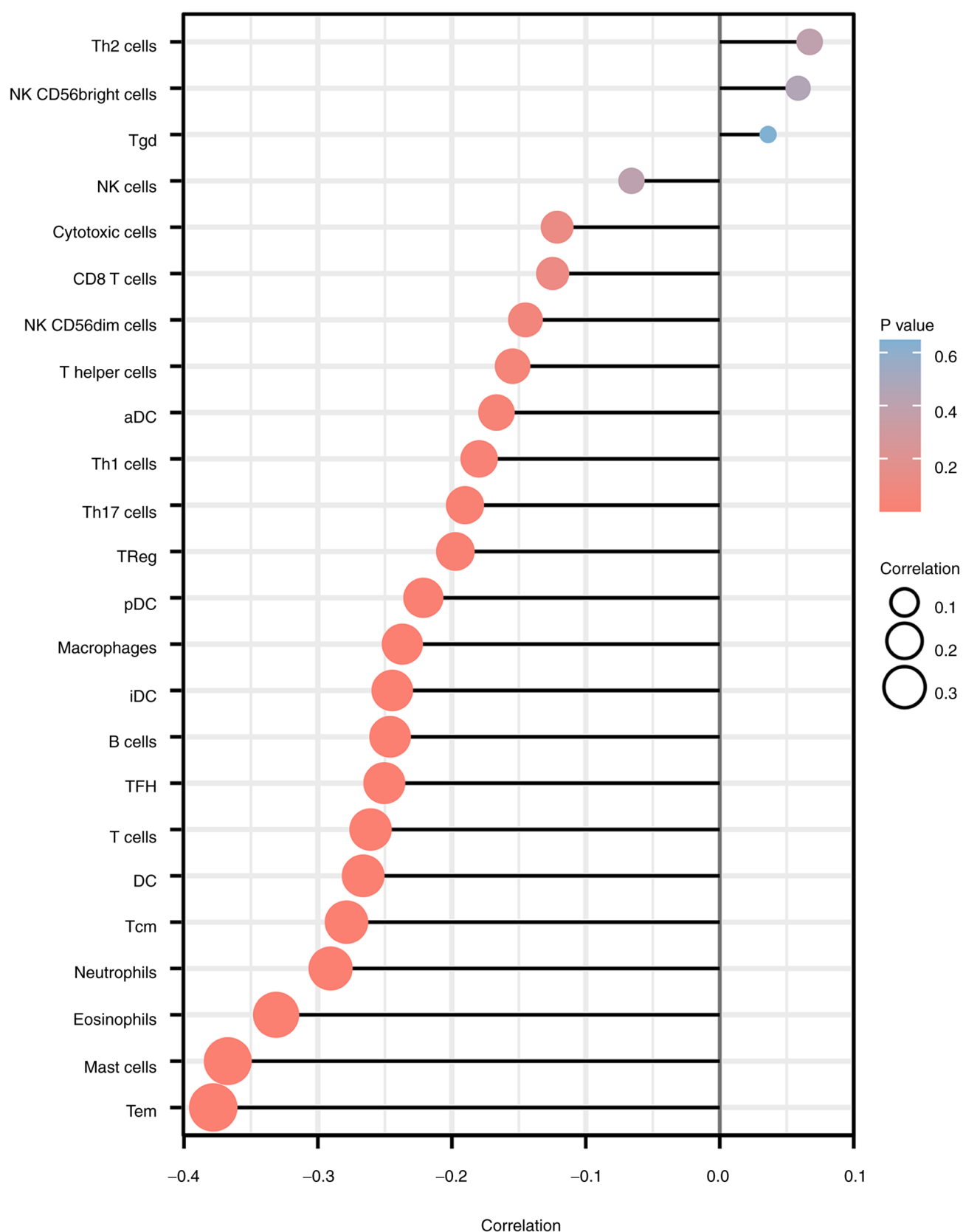


Figure S4. DPY30 expression was different in different types of immune infiltrated cells in ESCA. * $P < 0.05$, ** $P < 0.01$, *** $P < 0.001$. DPY30, dpy-30 homolog; ESCA, esophageal cancer; ns, no significance.

