

Figure S1. ImmuneScore, StromalScore and EstimateScore were not associated with clinicopathological characteristics (age and sex). ImmuneScore components were not significantly associated with (A) age (D) sex. StromalScore components were not significantly associated with (B) age or (E) sex. EstimateScore components were not significantly associated with (C) age or (F) sex.

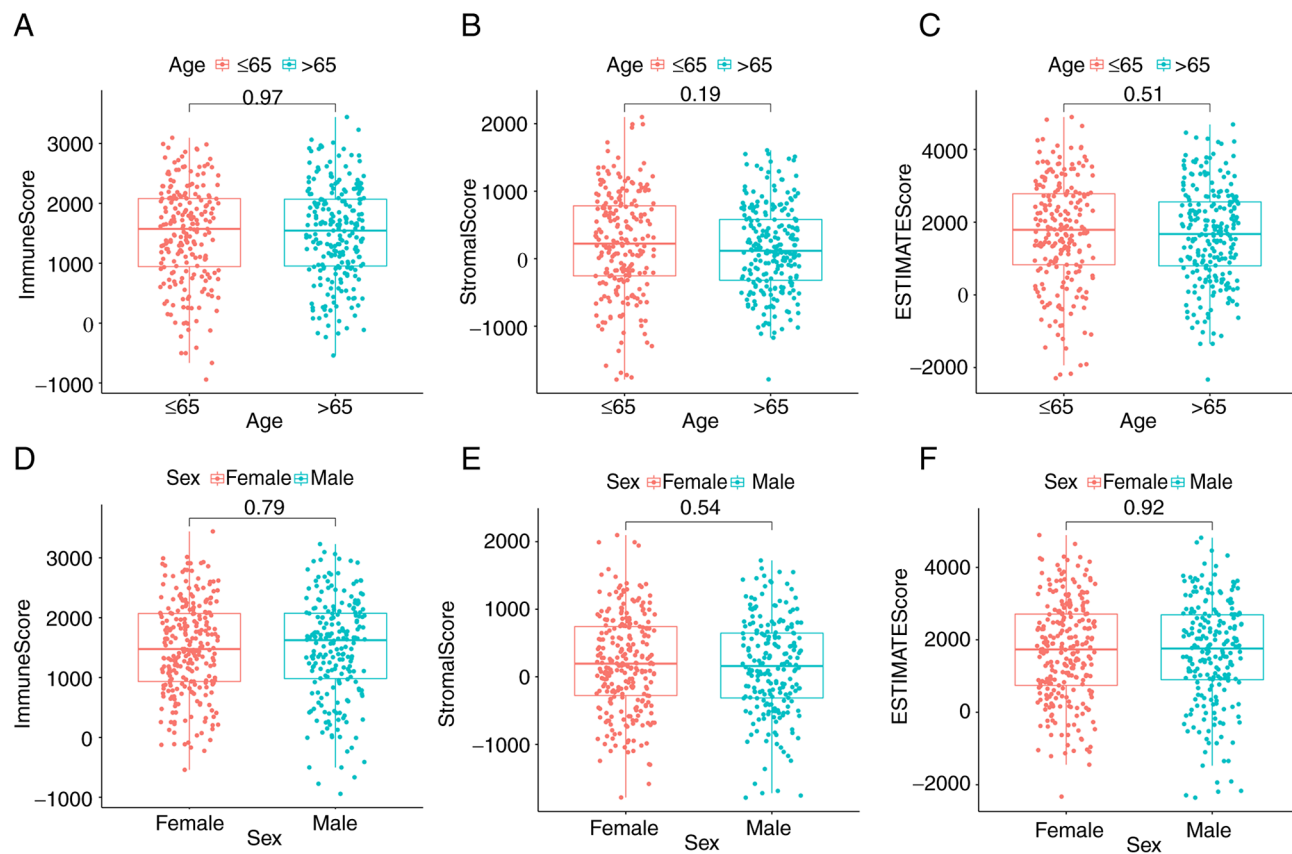


Figure S2. Heatmap for the DEGs between the high/low score groups. Heatmap of DEGs between the high/low (A) ImmuneScore and (B) StromalScore groups. Wilcoxon rank sum test (false discovery rate <0.05 and  $|\log FC| > 1$ ) was used to screen for DEGs. DEGs, differentially expressed genes.

