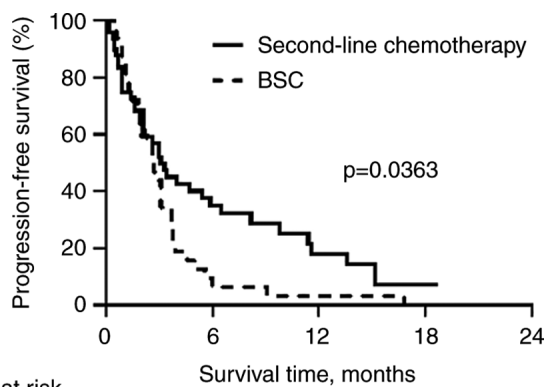


Figure S1. Progression-free survival of patients who received second-line chemotherapy vs. BSC. BSC, best supportive care.



Number at risk		Survival time, months			
	0	6	12	18	24
Second-line chemotherapy	51	13	5	1	0
BSC	32	3	1	0	0

Figure S2. Overall survival of patients who received second-line chemotherapy vs. BSC in patients who were (A) refractory to first-line GCS therapy and (B) intolerant to first-line GCS therapy. BSC, best supportive care; GCS, gemcitabine, cisplatin and S-1.

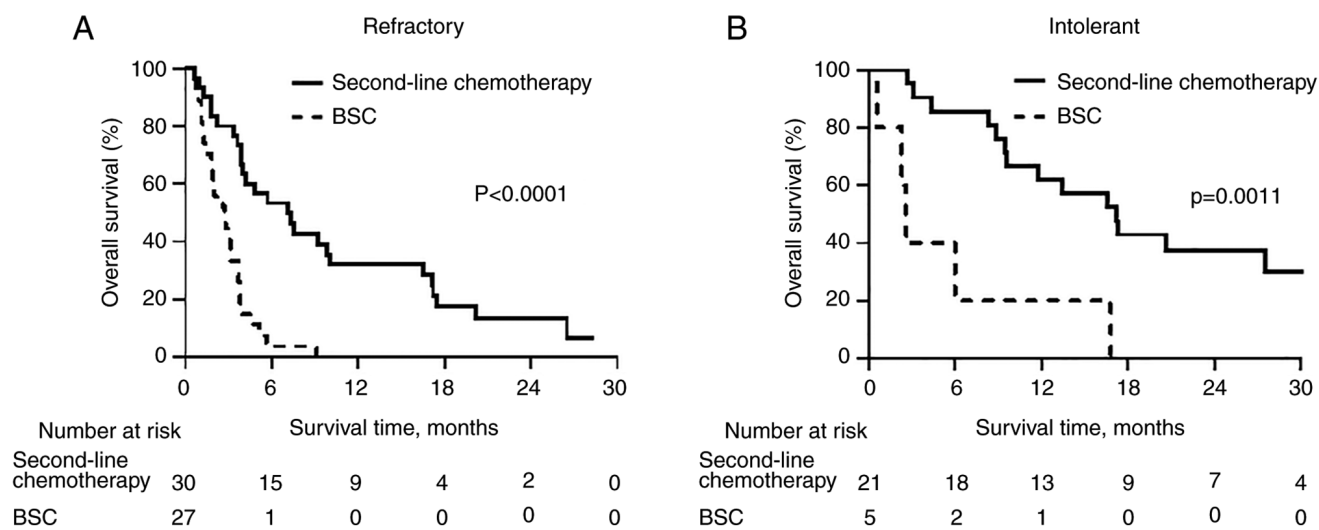
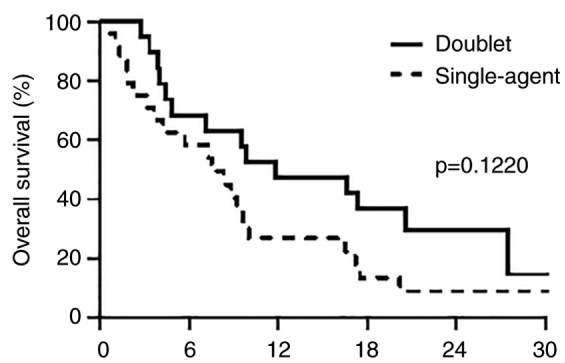


Figure S3. Overall survival of patients who received single agent vs. doublet chemotherapy.



	Survival time, months					
Number at risk	0	6	12	18	24	30
Doublet	19	13	9	6	4	1
Single-agent	24	13	6	3	1	1