

Figure S1. Observation of morphological changes in wild-type L cells stimulated with SiSo Sup/RCAS1⁺. This images showed the same cells in time dependent; scale bar, 30 μ m. RCAS1, Receptor-binding cancer antigen expressed on SiSo cells.

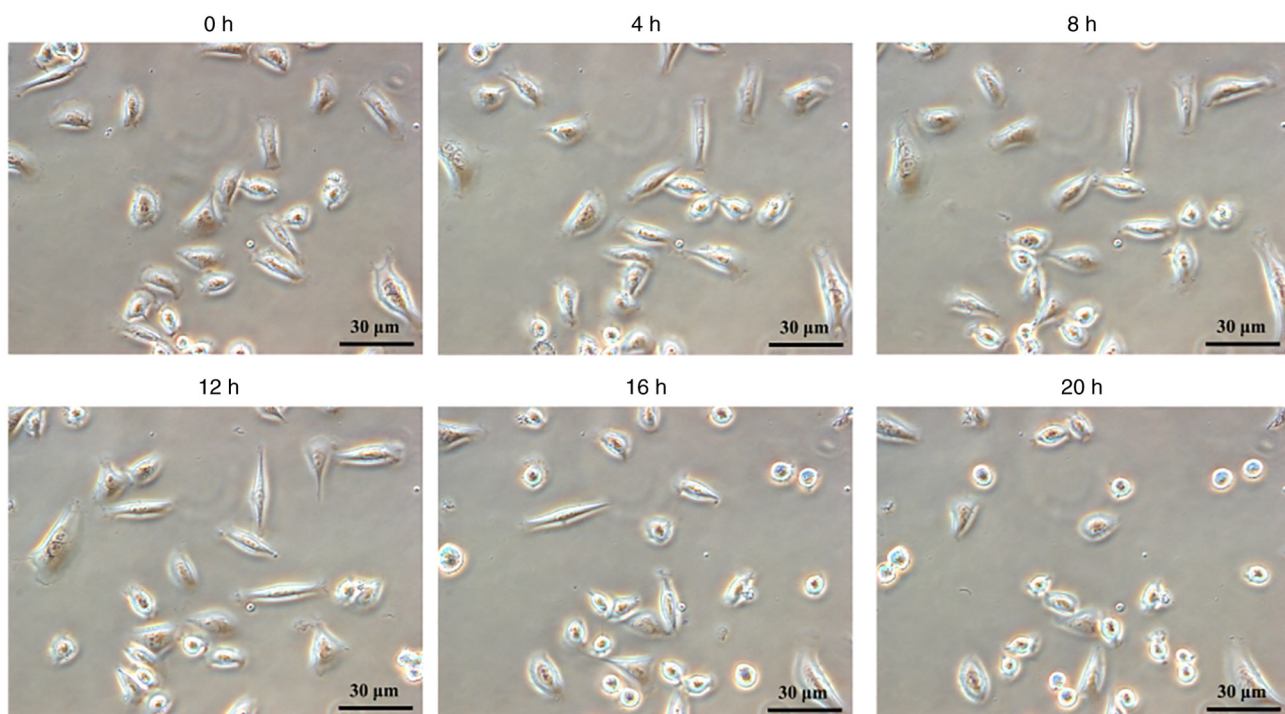


Figure S2. Cytotoxicity to wild-type L cells of Doxycycline. Results are presented as the mean \pm standard deviation of three independent experiments; *P<0.05 vs. 0 μ g/ml.

