

Figure S1. Colonies formed during colony formation assay. Representative pictures of colonies formed by spheroid cells in groups G1-G9 at 10, 20 and 30 days. G, group; d, day.

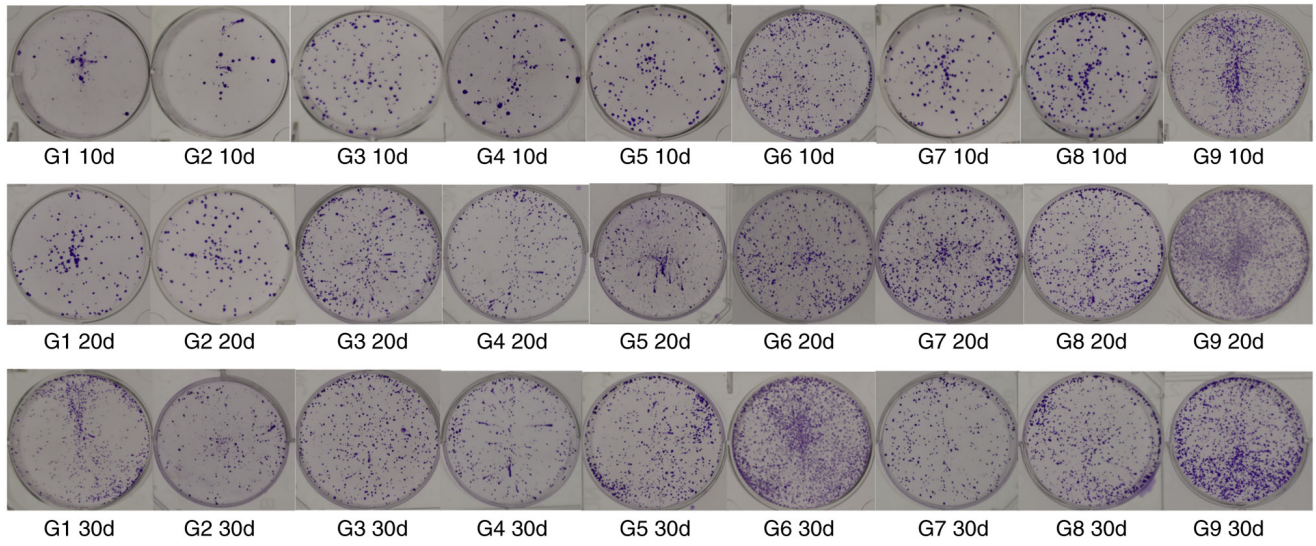


Figure S2. Tumors of subcutaneous tumorigenesis in nude mouse. Representative pictures of tumors derived from cells injected subcutaneously after culture in different serum-free medium conditions for 10, 20 and 30 days. Images were captured after the tumors were soaked in formalin. G, group; d, day.

