

Figure S1. Results of flow cytometry for OV-6 (Aa-c) and CK-19 (Ba-c) with primary HOCs and induced differentiation of BDEs. HOCs, hepatic oval cells; BDEs, bile duct epithelial cells; Ger, generation.

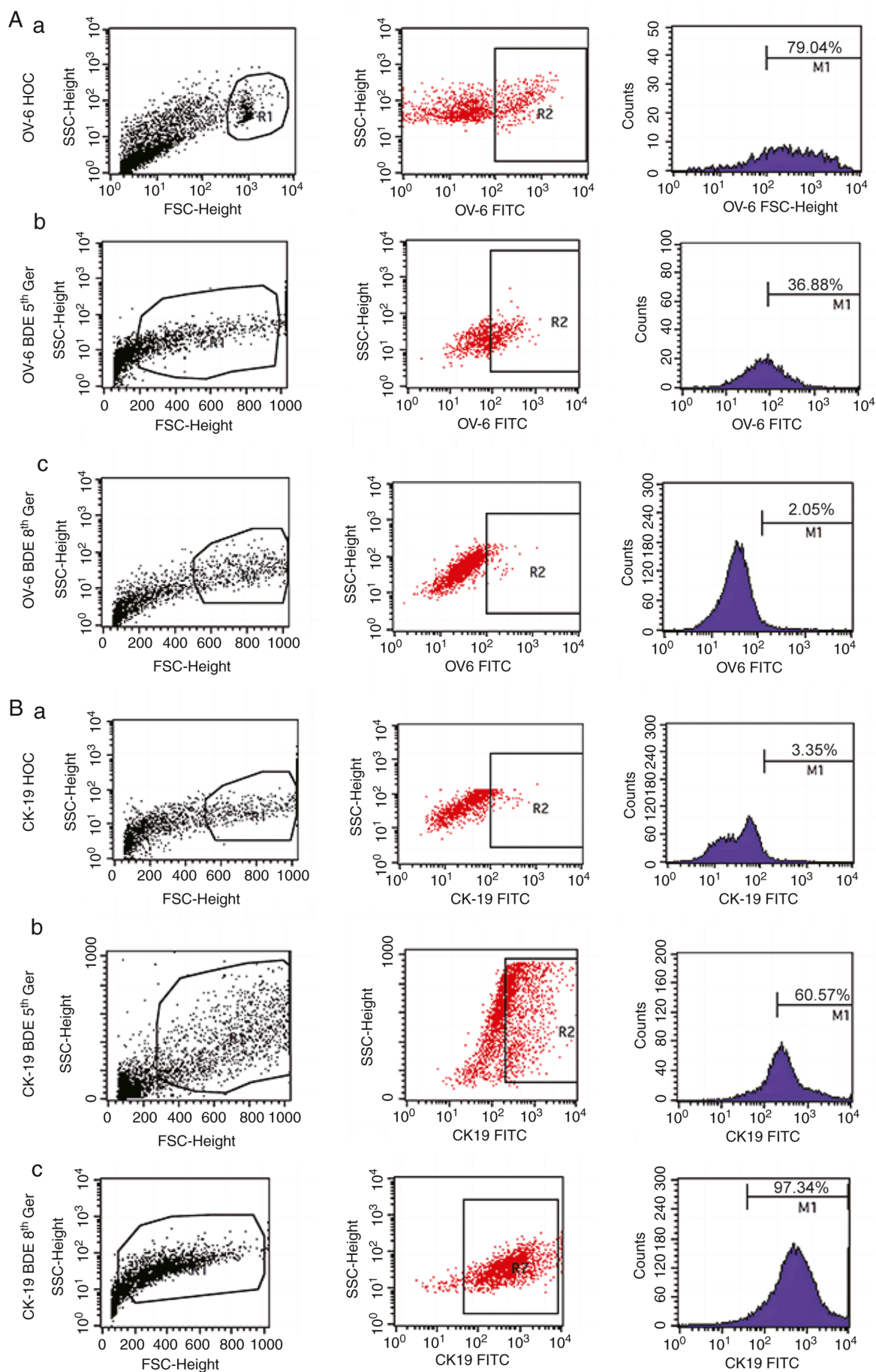


Figure S2. Label-free Liquid Chromatography with tandem mass spectrometry data with quality assessment. (A) Protein electrophoresis. (B) Peptide quality assessment. (C-E) The number distribution of peptide segments. The horizontal coordinate is the number range of covering peptide segments, and the vertical coordinate is the number of proteins. (F-H) Peptide sequence coverage. This diagram shows the proportion of proteins in different coverage ranges, with different colors representing different sequence coverage ranges HOCs, hepatic oval cells; BDEs, bile duct epithelial cells; Ger, generation.

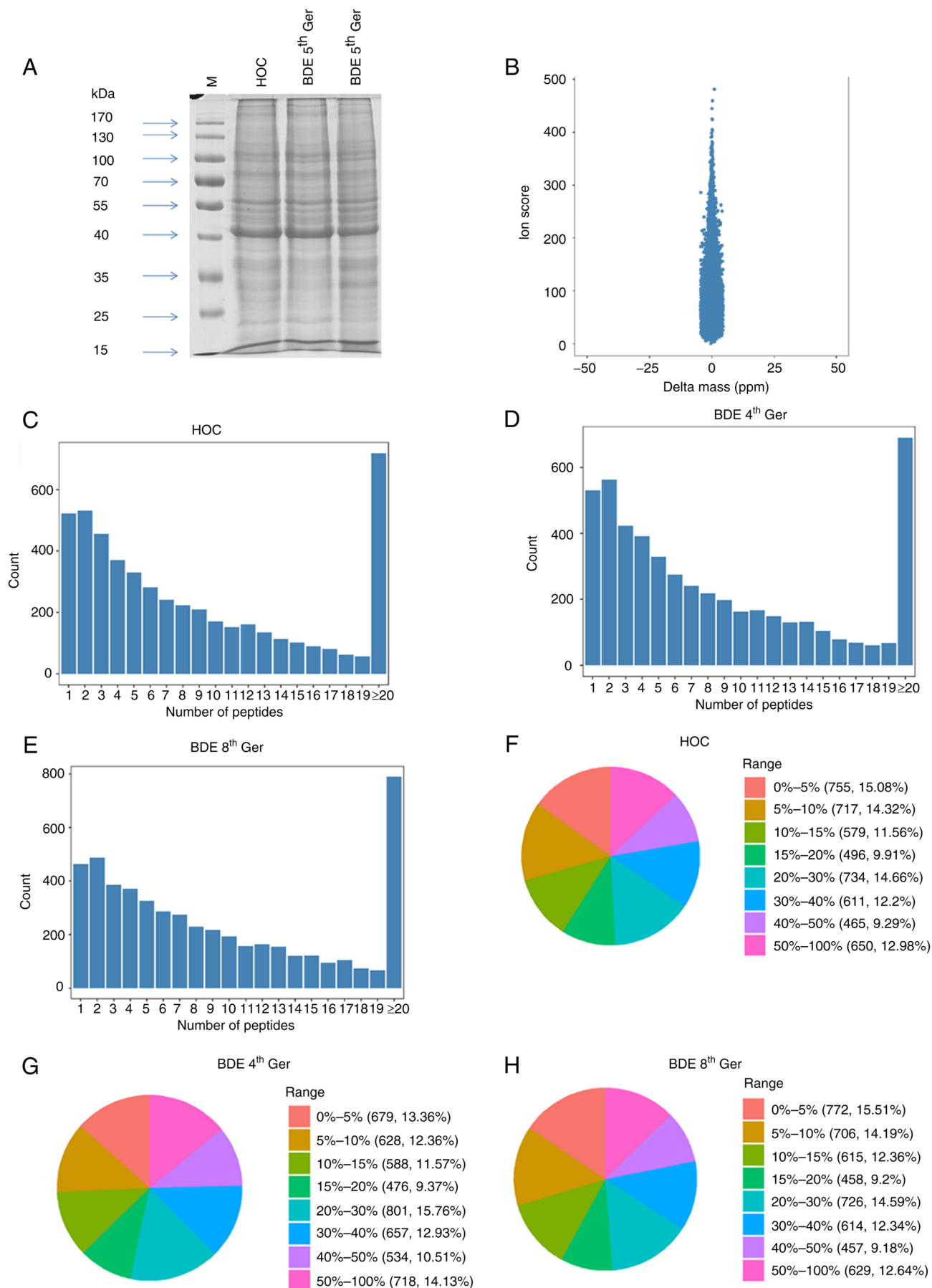


Figure S3. Correlation analysis between BDEs 4th Ger, BDEs 8th Ger and HOCs group. BDEs, bile duct epithelial cells; Ger, generation; HOCs, hepatic oval cells.

