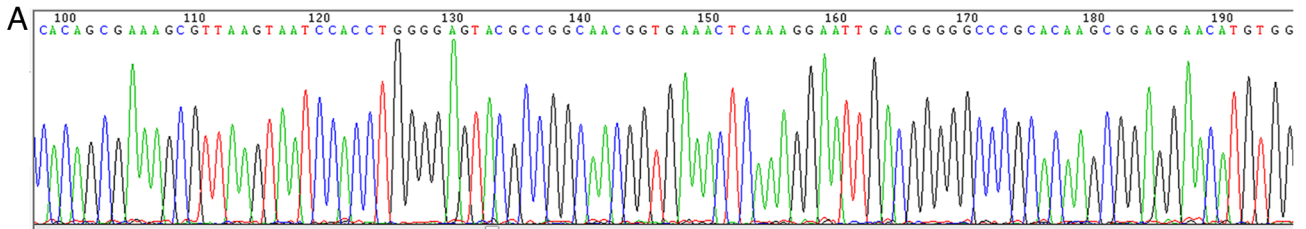


Figure S1. Sequencing of *Porphyromonas gingivalis* 16S rDNA nested PCR products from NPC formalin-fixed paraffin-embedded tissues. (A) Partial of sequencing map from NPC-18 sequenced in forward direction with 404-F primers. (B) Nested PCR product sequences for each NPC subjects. NPC, nasopharyngeal carcinoma.



B

NPC-14_404 For
AGATACCCCTGGTAGTCCACGCGAGTAAACGATGATTACTAGGAGTTTGC GATA
TACCGTCAAGCTTCCACAGCGAAAGCGTAAAGTAATCCACCTGGGGAGTAC
GCCGGCAACGGTGAAGAACTCAAAGGAATGACGGGGCCCGCACAAGCGG
AGGAACATGTGGTTAATTGATGATACGCGAGGAACTTACCCGGGATTG
AAATGTAGATGACTGATGCGTGAACCCGCTTCCCTTCGGGGCTTCTATGTA
GGTGCTGATGTTGTCAGTCTGTCGCGGTAGGTTGTCGCTTAAGTGC
CATAACGAGCGCAACCCACATCGTA

NPC-14_404 Rev
CGGCACGAGCTGACGACAACCATGCGACACCTACATAGAAAGCCCGAAGG
GAAGACGGTTTTCACCATCATGCTATCTACATTTCAATCCCGGGTAAGGTTCC
TCGCGTATCATCGAATTAACACACATGTTCTCCGCTTGTGGGGCCCGT
CAATTCCTTTGAGTTTCAACGTTGCGCGCTACTCCCAAGGTGATTAATTA
ACGCTTTGCTGTTGAAAGCTTACGGTATATCCAAACTCCTAGTAATCATC
GTTACTGGGTGACTACGAGGGTATCTAATCTGTTGATACCCACGCCTT
CGTCTTCAAGTGTACGTCAGTCCAGTA

NPC-18_404 For
ACCCTGGTAGTCCACGCGAGTAAACGATGATTACTAGGAGTTTGC GATA
GTC AAGCTTCCACAGCGAAAGCGTAAAGTAATCCACCTGGGGAGTAC
GCCAAGGTTGAAGTCAAAGGAAATGACGGGGCCCGACAAGCGGAGG
AACATGTGGTTAATTGATGATACGCGAAGAACTTACCCGGGATTGAAAT
GTAGATGACTGATGCTGAAACCCGCTTCCCTTCGGGGCTTCTATGTA
GCTGCTGTTGTCGTAAGTCTGTCGCGGTGAGGTTGCGGTTAAGTGC
CATACGAGCGCAACCCACATCG

NPC-18_404 Rev
AGCCGACACCTCAGCGACGAGCTGACGACAACCATGCGACCTACATAG
GAAGCCCGAAGGGAAGACGGTTTTCACCATCATGCTATCTACATTTCAATC
CGGGTAAGTTCCTCGCTATCATCGAATTAACACACATGTTCTCCGCTT
GTGGGGCCCGGTCATCTTGTGATTTCAACCTGTCGGGGTACTCC
CAGGTTGATTAATACGCTTTGCTGTTGGAAGCTTACGGGTTATATCGAA
ACTCTAGTAATCATGTTACTGCGGTGACTACAGGGTATCTAATCTGCT
TTGATACCCACGCTTCTGCTTCAAGTGTGCGTCCAGTA

NPC-23_404 For
TTAGATACCCCTGGTAGTCCACGCGAGTAAACGATGATTACTAGGAGTTTGC GATA
TAACCGTCAAGCTTCCACAGCGAAAGCGTAAAGTAATCCACCTGGGGAGT
ACGCCGCAACGGTGAAGAACTCAAAGGAATGACGGGGCCCGCACAAGC
GGAGGAACATGTGGTTAATTGATGATACGCGAAGAACTTACCCGGGATT
TGAATGTAGATGACTGATGCGTGAACCCGCTTCCCTTCGGGGCTTCTAT
GTAGGTCGCTGATGTTGTCAGTCTGTCGCGGTAGGTTGTCGCTTAAGT
GCCATAACGAGCGCAACCCACATCGTAGT

NPC-23_404 Rev
CGGCACGAGCTGACGACAACCATGCGACACCTACATAGAAAGCCCGAAGG
AAAACGGTTTTCACCATCATGCTATCTAATTTCAATCCCGGTAAGGTTCTC
CGCTATCATCGAATTAACACACATGTTCTCCGCTTGTGGGGCCCGGCT
AATTCCTTTGAGTTTCAACGTTGCGCGCTACTCCCAAGGTGATTAATTA
CGCTTTCGCTGTTGAAAGCTTACGGTATATCGCAACTCTAGTAATCATC
TTTACTGCTGGACTACAGGGTATCTAATCTGTTTGTGATAACCCACGCTT
GTGCTTCAAGTGTACGTCAGTCCAGTATG

NPC-25_404 Rev
CCTCACGGACGAGCTGACGACAACCATGCGACAGCACTACATAGAAAGCCCG
GAAGGGAAAGACGGTTTTCACCATCATGCTATCTAATTTCAATCCCGGGTAA
GGTTCTCGCGTATCATCGAATTAACACACATGTTCTCCGCTTGTGGGGC
CCCGTCAATTCCTTTGAGTTTTCACCGTTGCGCGGTACTCCCAAGGTGAT
TACTTAAACGCTTTCGCTGTTGGAAGCTTACGGGATATCGCAAACTCTAGTA
ATCATCGTTTACTGCGTGAACCTACCGAGGTATCTAATCTGTTGATACCCA
CGCTTTCGCTTCAAGTGTGTCAGTCCAGTATG

NPC-24_404 For
AGATACCCCTGGTAGTCCACGCGAGTAAACGATGATTACTAGGAGTTTGC GATA
TACCGTCAAGCTTCCACAGCGAAAGCGTAAAGTAATCCACCTGGGGAGTAC
GCCGGCAACGGTGAAGAACTCAAAGGAATGACGGGGCCCGCACAAGCGG
AGGAACATGTGGTTAATTGATGATACGCGAGGAACTTACCCGGGATTG
AAATGTAGATGACTGATGCGTGAACCCGCTTCCCTTCGGGGCTTCTATGTA
GGTGCTGATGTTGTCAGTCTGTCGCGGTAGGTTGTCGCTTAAGTGC
CATAACGAGCGCAACCCACATCGTA

NPC-24_404 Rev
CGGCACGAGCTGACGACAACCATGCGACACCTACATAGAAAGCCCGAAGG
GAAGACGGTTTTCACCATCATGCTATCTACATTTCAATCCCGGGTAAGGTTCC
TCGCGTATCATCGAATTAACACACATGTTCTCCGCTTGTGGGGCCCGT
CAATTCCTTTGAGTTTCAACGTTGCGCGCTACTCCCAAGGTGATTAATTA
ACGCTTTGCTGTTGAAAGCTTACGGTATATCCAAACTCCTAGTAATCATC
GTTACTGGGTGACTACGAGGGTATCTAATCTGTTGATACCCACGCCTT
CGTCTTCAAGTGTACGTCAGTCCAGTA

NPC-31_404 For
GATACCCCTGGTAGTCCACGCGAGTAAACGATGATTACTAGGAGTTTGC GATA
GATACCCCTGGTAGTCCACGCGAGTAAACGATGATTACTAGGAGTTTGC GATA
TACCGTCAAGCTTCCACAGCGAAAGCGTAAAGTAATCCACCTGGGGAGTAC
GCCGGCAACGGTGAAGAACTCAAAGGAATGACGGGGCCCGCACAAGCGG
AGGAACATGTGGTTAATTGATGATACGCGAGGAACTTACCCGGGATTG
AAATGTAGATGACTGATGCGTGAACCCGCTTCCCTTCGGGGCTTCTATGTA
GGTGCTGATGTTGTCAGTCTGTCGCGGTAGGTTGTCGCTTAAGTGC
CATAACGAGCGCAACCCACATCGTAGTCCAGTA

NPC-31_404 Rev
CGGCACGAGCTGACGACAACCATGCGACACCTACATAGAAAGCCCGAAGG
AAAACGGTTTTCACCATCATGCTATCTAATTTCAATCCCGGTAAGGTTCTC
CGCTATCATCGAATTAACACACATGTTCTCCGCTTGTGGGGCCCGGCT
AATTCCTTTGAGTTTCAACGTTGCGCGCTACTCCCAAGGTGATTAATTA
CGCTTTCGCTGTTGAAAGCTTACGGTATATCGCAACTCTAGTAATCATC
TTTACTGCTGGACTACAGGGTATCTAATCTGTTTGTGATAACCCACGCTT
GTGCTTCAAGTGTACGTCAGTCCAGTATG

NPC-37_404 For
GATACCCCTGGTAGTCCACGCGAGTAAACGATGATTACTAGGAGTTTGC GATA
ACCGTCAAGCTTCCACAGCGAAAGCGTAAAGTAATCCACCTGGGGAGTAC
GCCGGCAACGGTGAAGAACTCAAAGGAATGACGGGGCCCGCACAAGCGG
AGGAACATGTGGTTAATTGATGATACGCGAGGAACTTACCCGGGATTG
AAATGTAGATGACTGATGCGTGAACCCGCTTCCCTTCGGGGCTTCTATGTA
GGTGCTGATGTTGTCAGTCTGTCGCGGTAGGTTGTCGCTTAAGTGC
CATAACGAGCGCAACCCACATCGTAGTCCAGTA

NPC-37_404 Rev
CACGGCAGAGCTGACGACAACCATGCGACACCTACATAGAAAGCCCGAAGG
GGGAAGACGGTTTTCACCATCATGCTATCTAATTTCAATCCCGGGTAAGT
TCCTCGGTATCATCGAATTAACACACATGTTCTCCGCTTGTGGGGCCCG
CGTCAATTCCTTTGAGTTTCAACGTTGCGCGCTACTCCCAAGGTGATTAC
TTAACGCTTTCGCTGTTGAAAGCTTACGGTATATCGCAAACTCTAGTAATC
ATCGTTTACTGCGTGGACTACCGAGGTATCTAATCTGTTGATACCCACGCT
CTTCGCTTCAAGTGTACGTCAGTCCAGTATG

NPC-42_404 For
GATACCCCTGGTAGTCCACGCGAGTAAACGATGATTACTAGGAGTTTGC GATA
ACCGTCAAGCTTCCACAGCGAAAGCGTAAAGTAATCCACCTGGGGAGTAC
GCCGGCAACGGTGAAGAACTCAAAGGAATGACGGGGCCCGCACAAGCGG
AGGAACATGTGGTTAATTGATGATACGCGAGGAACTTACCCGGGATTG
AAATGTAGATGACTGATGCGTGAACCCGCTTCCCTTCGGGGCTTCTATGTA
GGTGCTGATGTTGTCAGTCTGTCGCGGTAGGTTGTCGCTTAAGTGC
CATAACGAGCGCAACCCACATCGTAGTCCAGTA

NPC-42_404 Rev
ACGGCAGAGCTGACGACAACCATGCGACACCTACATAGAAAGCCCGAAGG
GGGAAGACGGTTTTCACCATCATGCTATCTAATTTCAATCCCGGGTAAGT
TCCTCGGTATCATCGAATTAACACACATGTTCTCCGCTTGTGGGGCCCG
TCAATTCCTTTGAGTTTCAACGTTGCGCGCTACTCCCAAGGTGATTACT
AACGCTTTCGCTGTTGAAAGCTTACGGTATATCGCAAACTCTAGTAATCAT
CGTCTTACTGCTGGACTACAGGGTATCTAATCTGTTTGTGATAACCCACGCT
TCGTTCTTCAAGTGTACGTCAGTCCAGTATG

Figure S2. Single-step PCR products detecting *Porphyromonas gingivalis* from formalin-fixed paraffin-embedded tissues for all subjects run on agarose gel with DL 2000 as DNA marker, including negative and positive controls. (A) Products examined from NPC-1 to NPC-12, positive and negative. (B) Products examined from NPC-13 to NPC-22. (C) Products examined from NPC-23 to NPC-45. NPC, nasopharyngeal carcinoma.

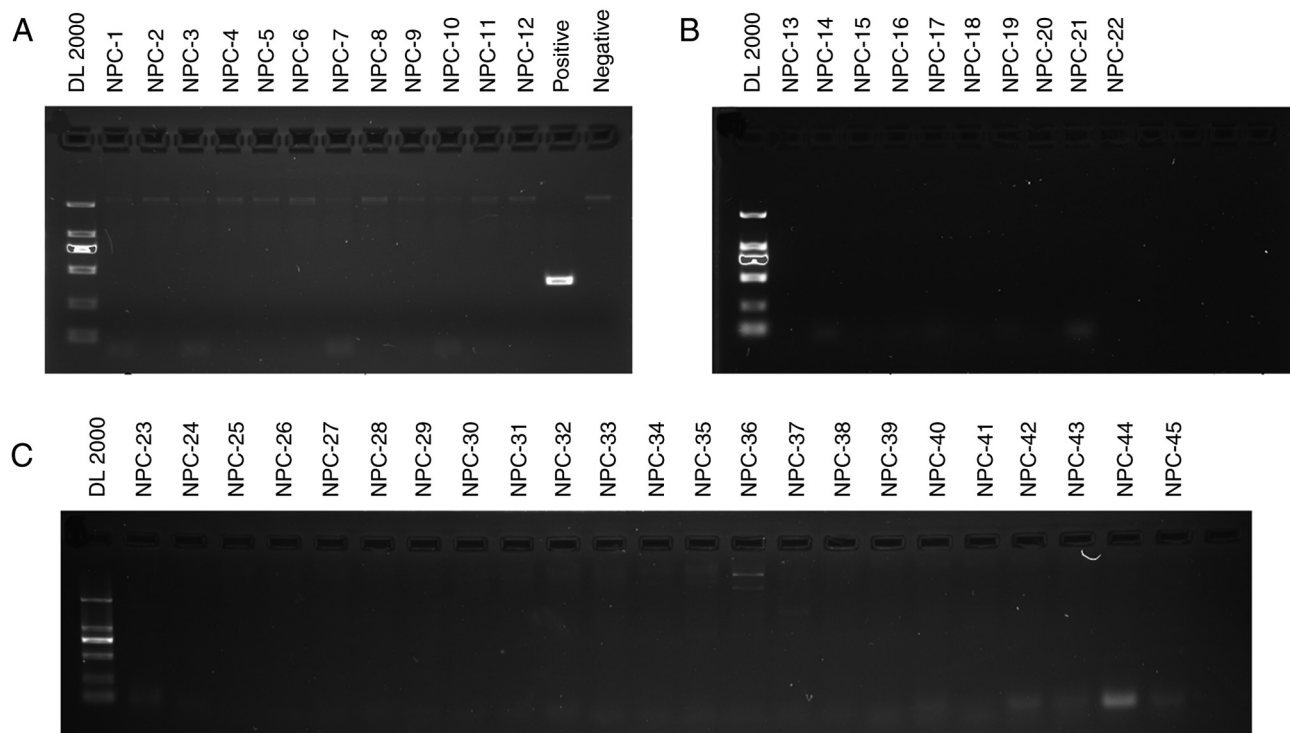


Figure S3. Kaplan-Meier curve showing the 5-year overall survival for *P. gingivalis* positive and *P. gingivalis* negative patients with nasopharyngeal carcinoma. Pg, *Porphyromonas gingivalis*; +, positive; -, negative.

