

Figure S1. Longitudinal data of five biomarkers other than soluble fibrin and D-dimer during the observation period. The colored lines represent data from patients who developed VTE. Data from patients who did not develop VTE are shown with dashed lines for the quartiles and with bold lines for the median. The interquartile range of each biomarker value is filled with light blue shading. FDP, fibrinogen degradation products; VTE, venous thromboembolism.

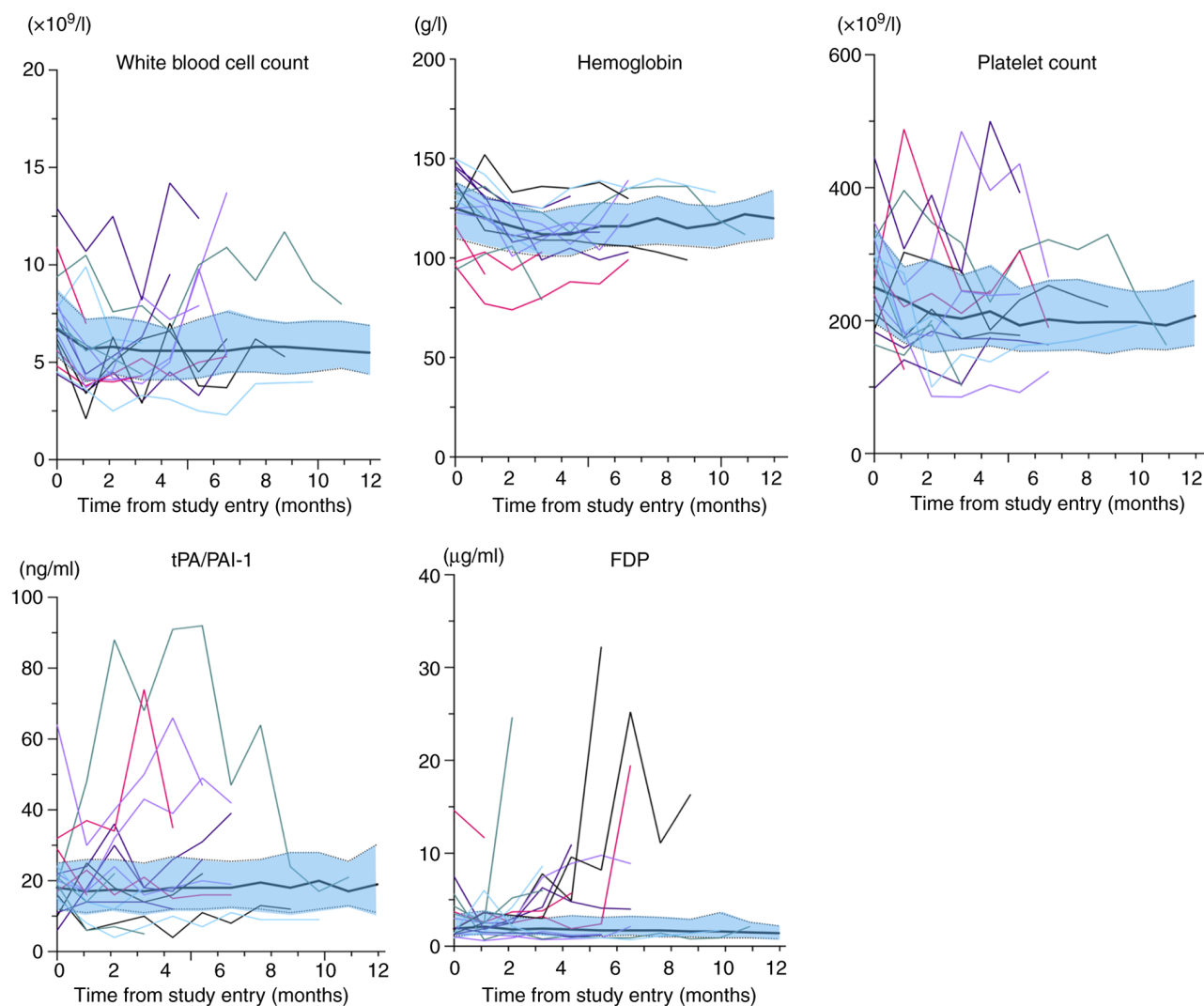


Figure S2. Results of a further analysis of the relationship between OS and the presence or absence of VTE or our proposed score. It was examined whether there was a statistical difference in OS with or without VTE or between scores. (A) Kaplan-Meier plot of OS for all patients. (B) Comparison of OS between patients with VTE and without VTE. (C) Comparison of OS based on our proposed score. OS, overall survival; VTE, venous thromboembolism.

