

Figure S1. Flow cytometric analysis of an isolated sample of cells confirming CD8<sup>+</sup> T cells.

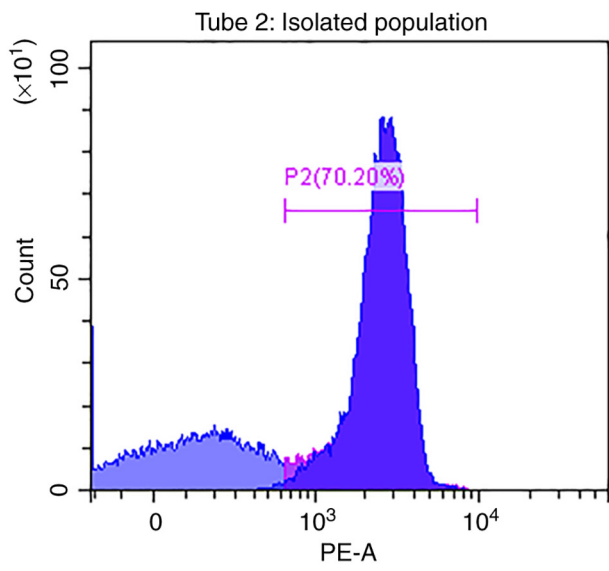


Figure S2. Transfection efficiency of miR-155 upregulation and knockdown using mimics and antagonirs in CD8<sup>+</sup> T cells from all groups. Confirmed efficient upregulation of miR-155 compared to mock (P=0.0008). The same pattern was observed in all groups. \*\*\*P<0.001. miR-155, microRNA-155.

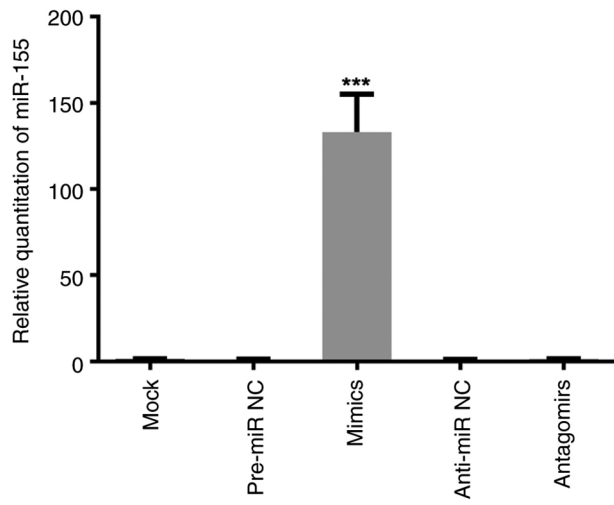


Figure S3. Transfection efficiency of ICAM1 and ITGB2 knockdown using siRNA in CD8<sup>+</sup> T cells from all groups. (A and B) Confirmed efficient knockdown of (A) ICAM1 and (B) ITGB2 compared to the mock group (P=0.0367 and P=0.0105 respectively). \*P<0.05. siRNA, small interfering RNA; ICAM1, intracellular adhesion molecule-1; ITGB2, integrin subunit  $\beta$ 2.

