

Figure S1. Images from the flow cytometry analysis of bone marrow cells before treatment. Markers run: CD5, CD7, CD56, CD8, CD4, CD3, CD2, CD10, CD19, CD20, CD14, CD13, CD64, CD16, CD11b, CD15, CD36, CD33, CD34, CD117, CD71, HLA-DR, CD38, CD138, CD200, CD61, CD45, sIg- $\kappa$  and sIg- $\lambda$ . sIg, cell-surface immunoglobulin; HLA, human leucocyte antigen; granu, granulocyte; lym, lymphocyte; Mono, monocyte; NEG, negative.

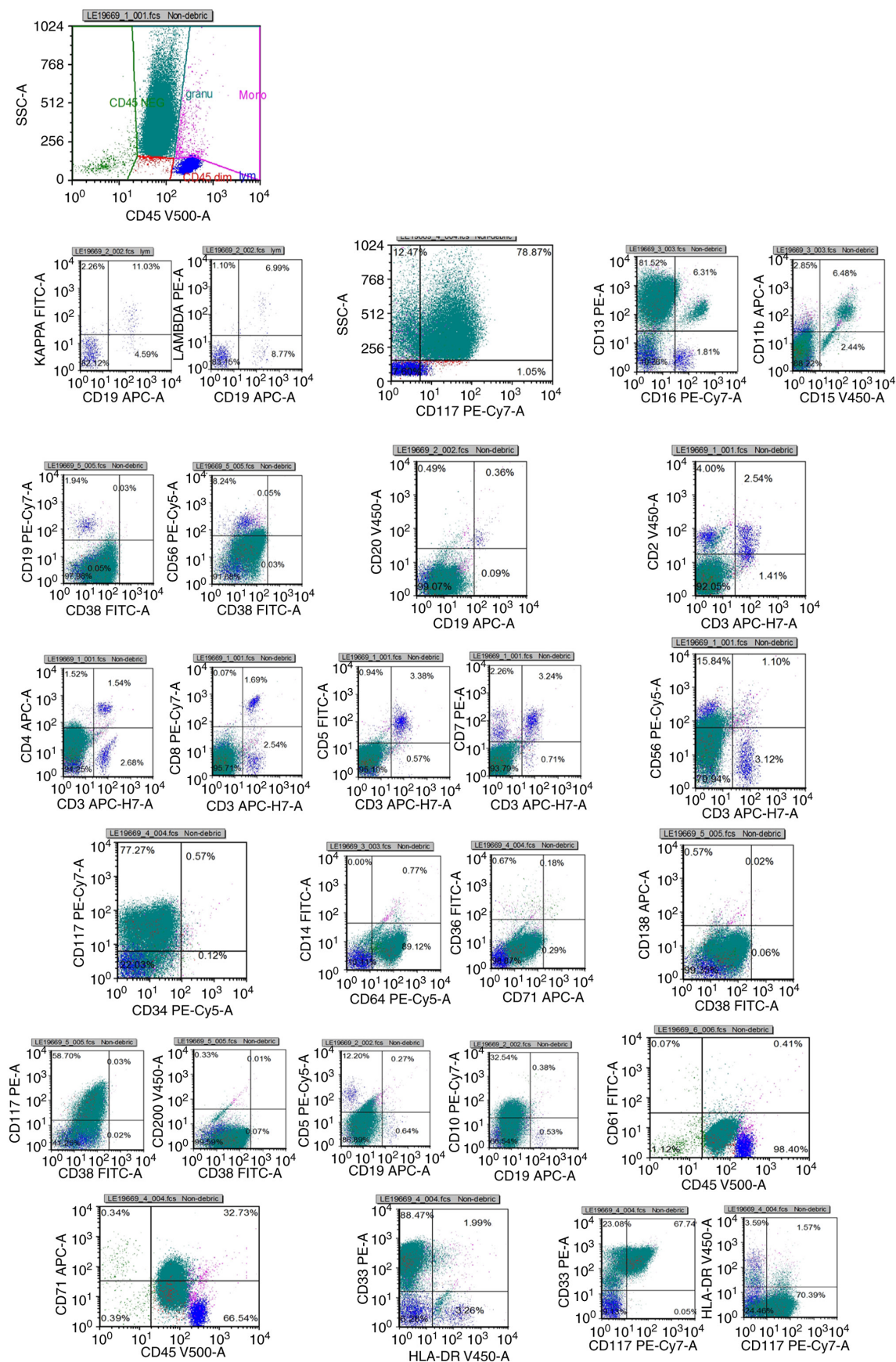


Figure S2. Images from the flow cytometry analysis of bone marrow cells after CR. No promyelocytes with abnormal immunophenotype were found. Markers run: CD58, CD10, CD34, CD19, HLA-DR, CD33, CD117, CD123, CD9, CD71, CD41, and CD45. HLA, human leucocyte antigen.

