

Figure S1. Identification of rat tail genotypes in F0 generation rats. The primers used were as follows: EGE-WL-008-WT-F1/EGE-WL-008-Mut-R; E5L8-003, E5L8-006, E5L8-007, E5L8-024, E5L8-029, E5L8-030, E5L8-057, E5L8-060, E5L8-064, E5L8-067 and E5L8-086 were F0 generation positive rats.

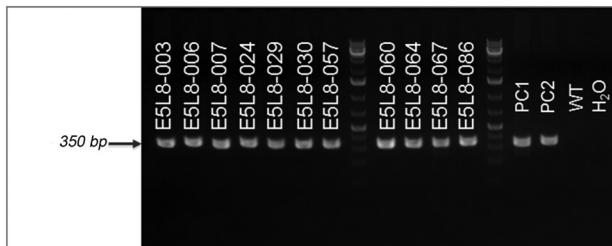


Figure S2. Genotype identification of rat tail in F1 generation rats. The primers used were as follows: EGE-WL-008-WT-F1/EGE-WL-008-WT-R1 and EGE-WL-008-WT-F1/EGE-WL-008-Mut-R; 1E5L8-017, 1E5L8-023, 1E5L8-028, 1E5L8-032, 1E5L8-039 and 1E5L8-040 were F1-positive rats.

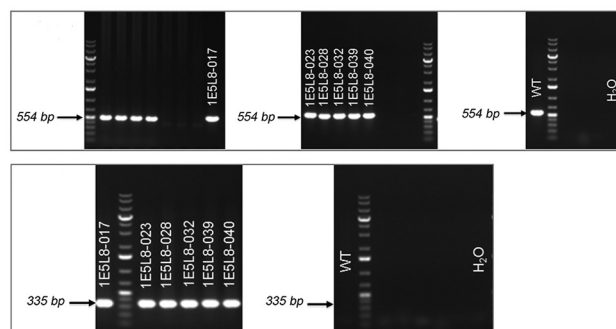


Figure S3. Immunocytochemistry for the expression of cytokeratin 18 (x40 magnification).

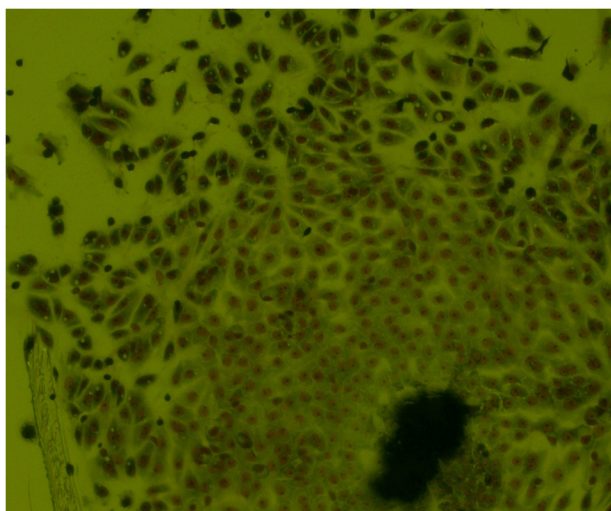


Figure S4. The typical cobblestone appearance of renal tubular epithelial cells (x40 magnification).

