

Figure S1. Peaks obtained in fragment analysis. Lane 1, marker: a mixture of miR-1246l-2l0l, miR-1246l-1l0l and miR-1246l0l0l; lane 2, marker: miR-1246l0l0l; lane 3, a chemically synthesized cDNA (Adpl-miR1246l0l0l cDNA). Protocol I was used. miR/miRNA, microRNA; NSCLC, non-small cell lung cancer; RFUs, relative fluorescent units.

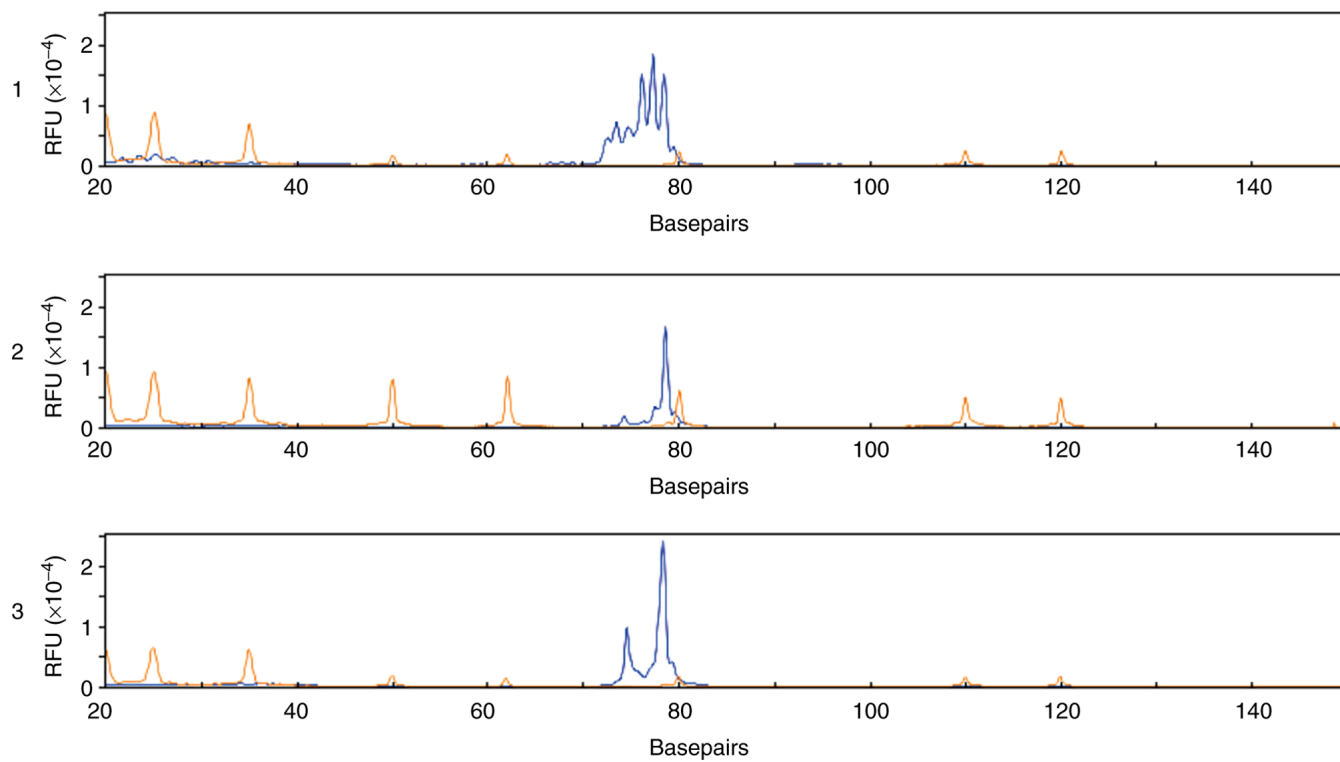


Figure S2. Peaks obtained in fragment analysis. Lane 1, marker: a mixture of miR-1246l-2l0l, miR-1246l-1l0l and miR-1246l0l0l; lanes 2 and 3, the pooled serum sample. Protocol I was used. miR/miRNA, microRNA; RFUs, relative fluorescent units.

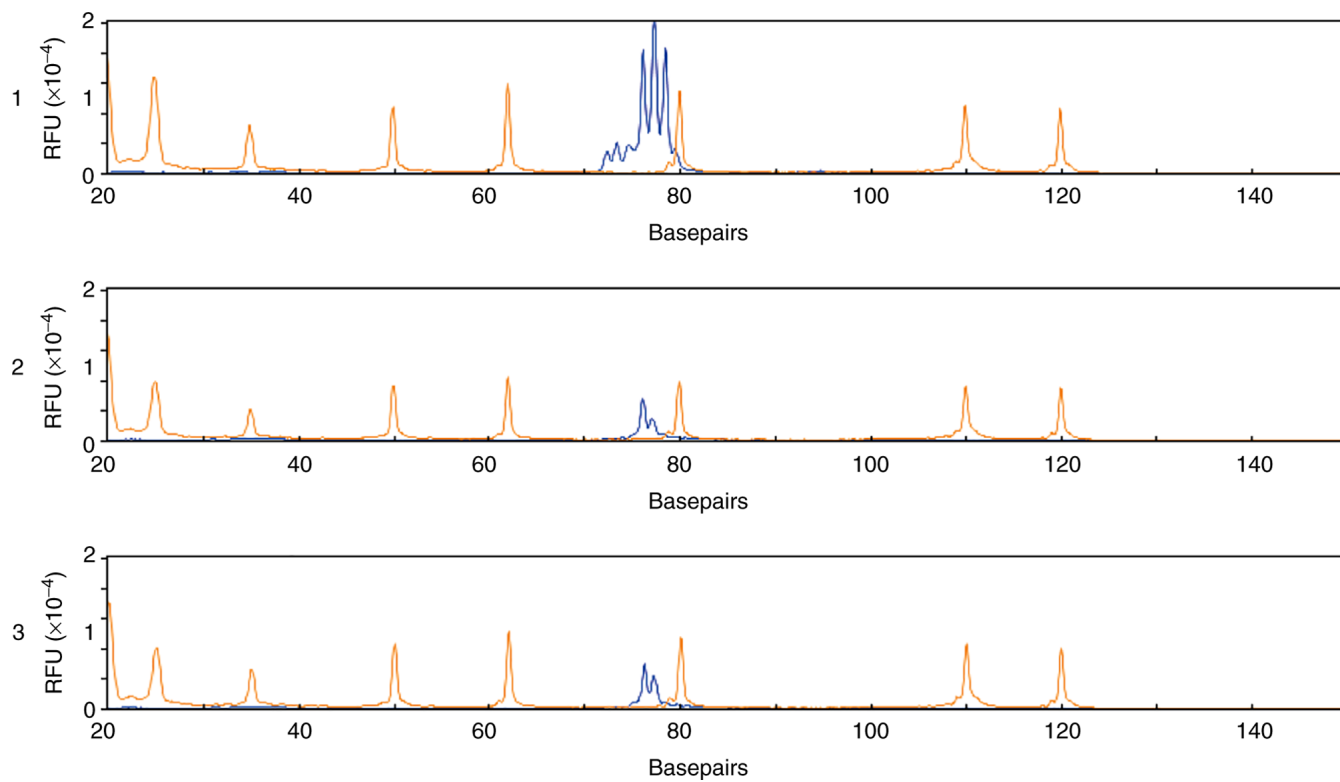


Figure S3. Semi-quantification of fragment analysis using protocol II. Chemically synthesized miR-124610101 was used. miR/miRNA, microRNA; RFUs, relative fluorescent units.

