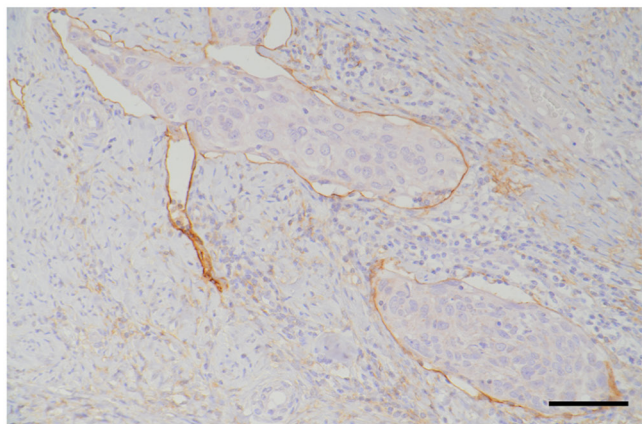
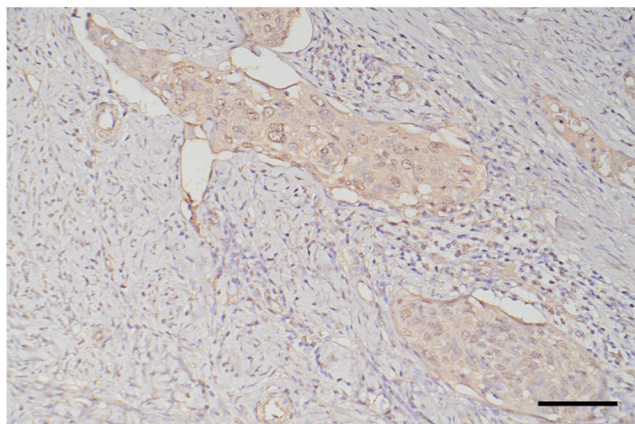


Figure S1. Immunohistochemical staining for AMIGO2 expression in cervical cancer cells invading lymphatic vessels. AMIGO2 expression in cancer cells in D2-40-positive lymphatic vessels was analyzed using serial sections in two cases. Scale bar, 100 μ m. AMIGO2, amphoterin-induced gene and open reading frame 2.

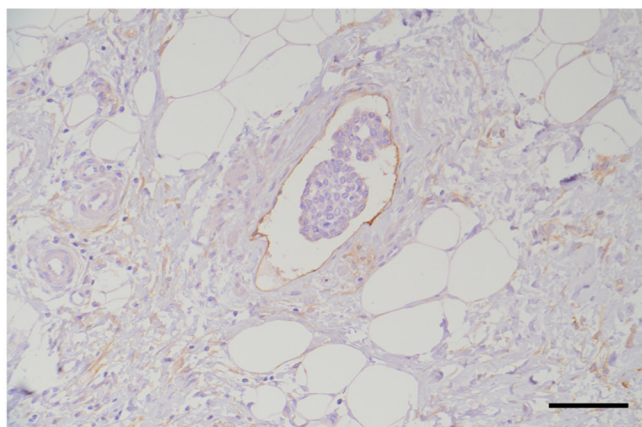
Case 1



D2-40



AMIGO2



Case 2

