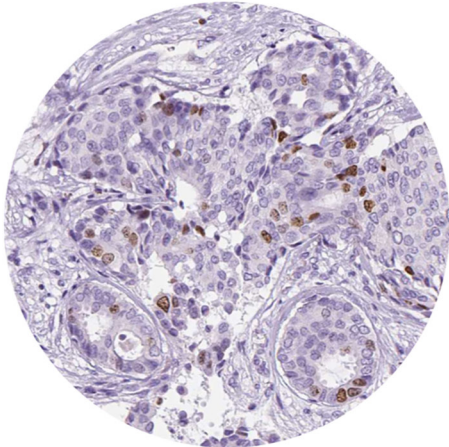


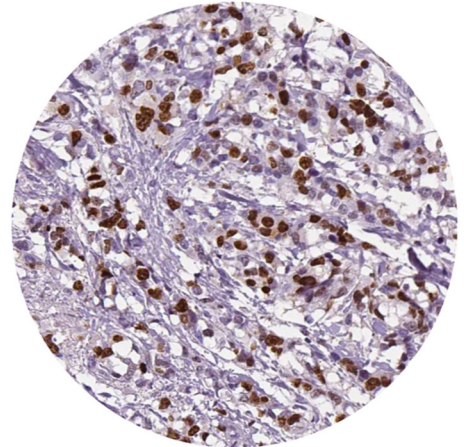
Figure S1. Immunohistochemical analysis of samples derived from patients with breast cancer. The presentations of breast tumor tissues from patients with a (A) Ki-67 level <30%, a (B) Ki-67 level \geq 30%, (C) IHC++ and (D) IHC+++. IHC, immunohistochemistry.

A



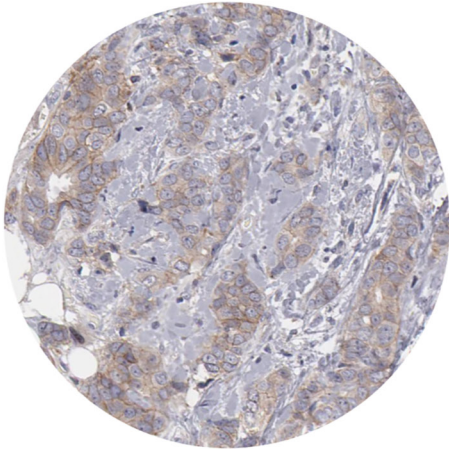
Breast tumor tissue in patients with Ki-67 level <30%

B



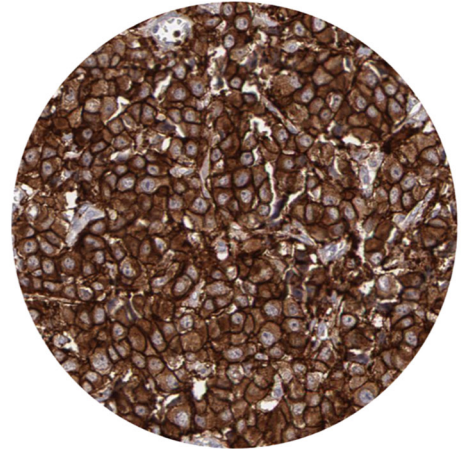
Breast tumor tissue in patients with Ki-67 level \geq 30%

C



Breast tumor tissue in patients with IHC++

D



Breast tumor tissue in patients with IHC+++

Figure S2. Comparison of tpCR between neoadjuvant pyrotinib plus trastuzumab and chemotherapy vs. pyrotinib plus chemotherapy. tpCR, total pathological complete response.

