

Figure S1. Clinical factors related to SOCS2. (A) Clinical factors (ethnicity, TP53 mutation status, nodal metastasis status, smoking habits) associated with SOCS2 in LUAD. (B) Clinical factors (ethnicity, TP53 mutation status, nodal metastasis status, smoking habits) of SOCS2 in LUSC. ***P<0.001, ****P<0.0001. LUAD, lung adenocarcinoma; LUSC, lung squamous cell carcinoma; SOCS2, suppressor of cytokine signaling 2; TCGA, The Cancer Genome Atlas.

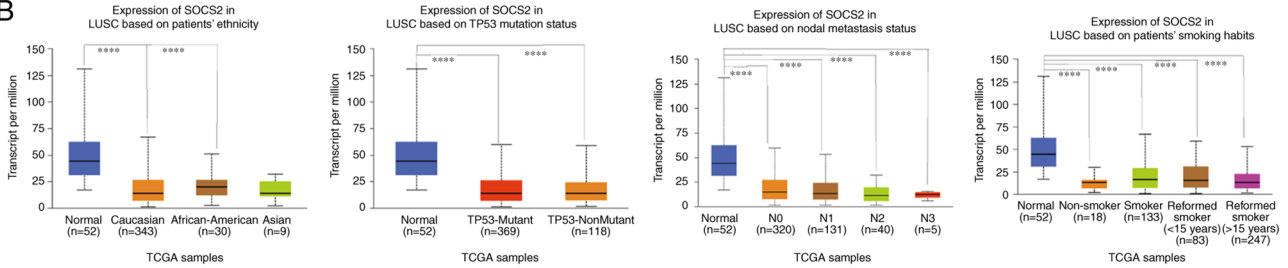
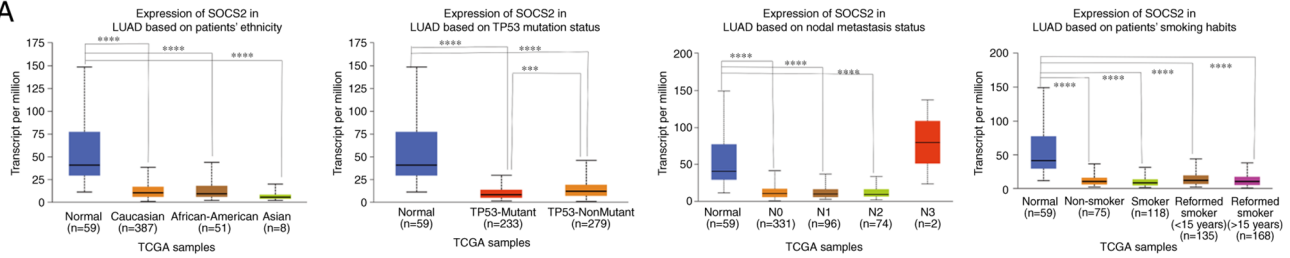


Figure S2. Knockdown effect of (A) shSOCS2 and (B) siSOCS2, as determined by western blot analysis. CT, control; NC, negative control; shSOCS2, short hairpin RNA SOCS2; si, small interfering; SOCS2, suppressor of cytokine signaling 2. The two bands of GAPDH may be due to excessive voltage.

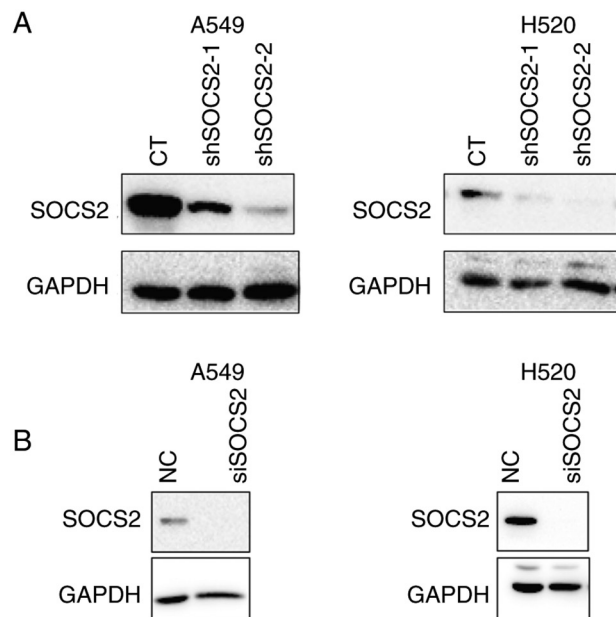


Figure S3. Protein-protein interaction of SOCS2. SOCS2, suppressor of cytokine signaling 2.

