

Figure S1. Diabetes mellitus ORs. (A) Forest plot of diabetes mellitus ORs demonstrated no statistically significant difference between the groups (total OR 1.07, CI 95% 0.58-1.40;  $p$  0.61). (B) Funnel plot of the diabetes mellitus ORs demonstrated no heterogeneity in the groups ( $P=0.56$ , and  $I^2=0\%$ ). ET, endovascular thrombolysis; medical, medical management; OR, odds ratio.

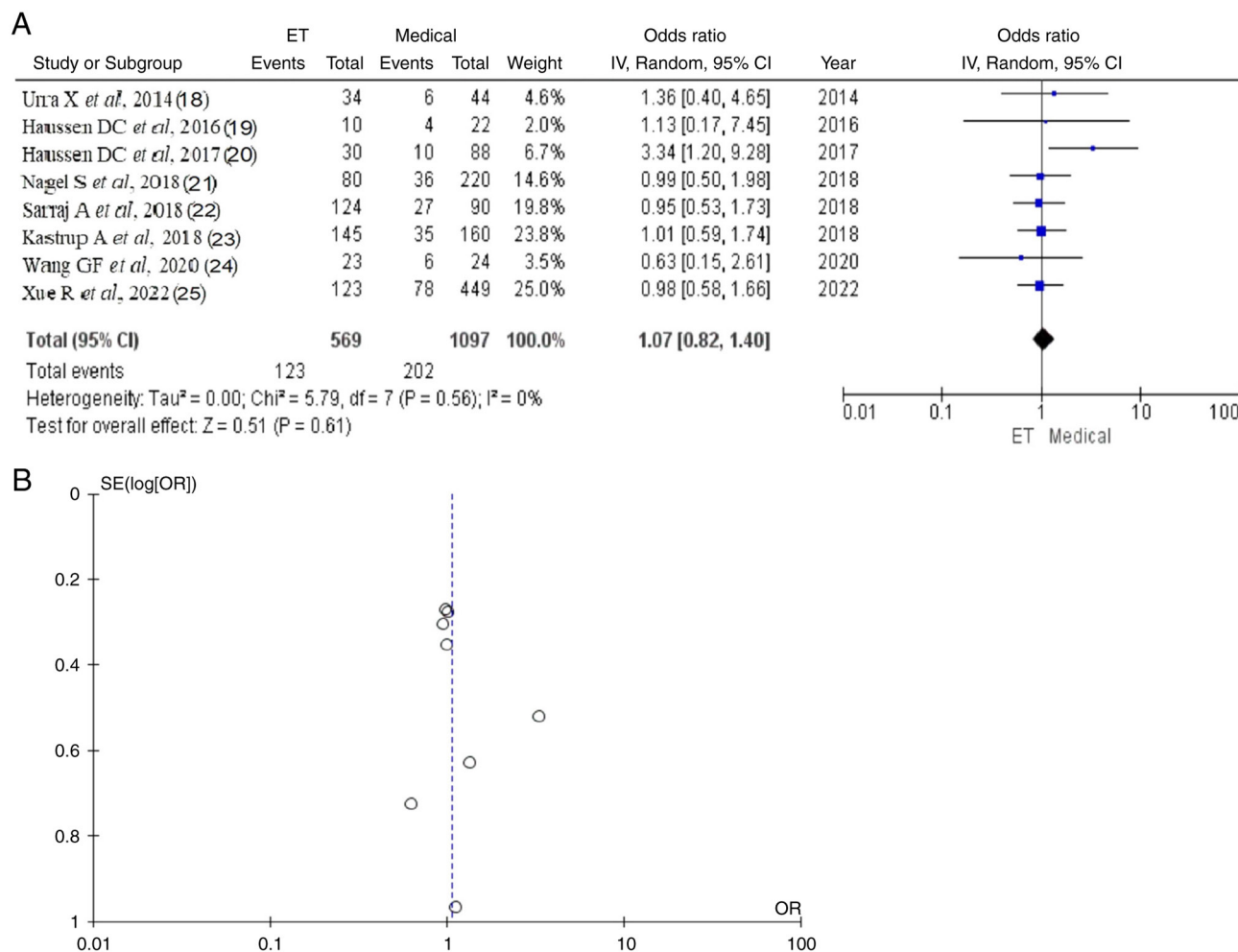


Figure S2. Hypertension ORs. (A) Forest plot hypertension ORs demonstrated no statistically significant results (total OR 1.87, CI 95% 0.68-1.10;  $P=0.23$ ). (B) Funnel plot of the hypertension ORs demonstrated no heterogeneity in the groups ( $P=0.83$  and  $I^2=0\%$ ). ET, endovascular thrombolysis; medical, medical management; OR, odds ratio.

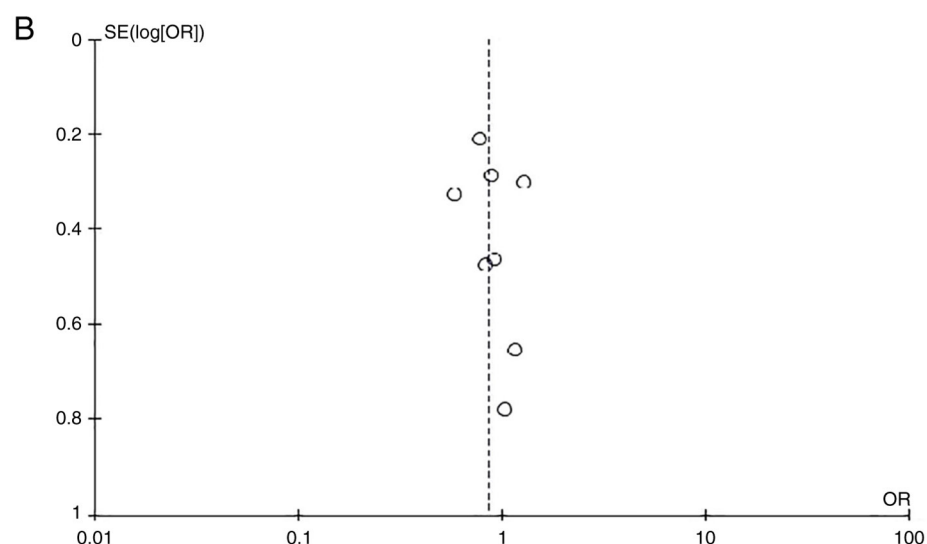
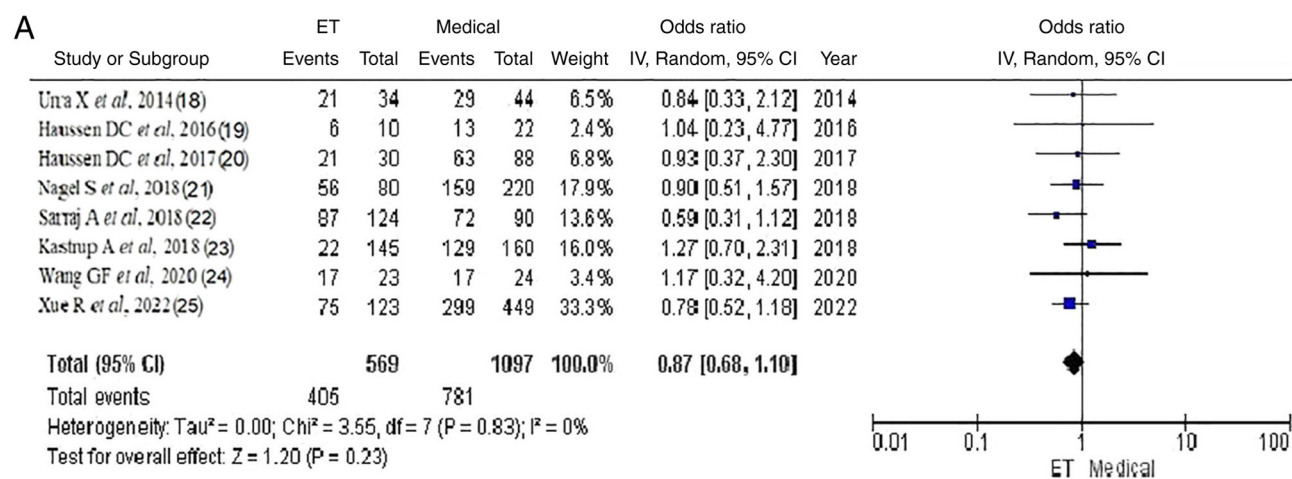


Figure S3. Prior ischemic stroke ORs. (A) Forest plot of prior ischemic stroke ORs demonstrated no statistically significant difference groups (total OR 0.97, CI 95% 0.56-1.70;  $P=0.93$ ). (B) Forest plot of prior ischemic stroke ORs without 'Urta *et al* 2014' (18) article demonstrated no statistically significant difference between the groups (total OR 0.90, CI 95% 0.60-1.36;  $P=0.63$ ). (C) Funnel plot of the prior ischemic stroke ORs between groups, with 'Urta *et al*, 2014'(18) article and with heterogeneity ( $P=0.21$  and  $I^2=32\%$ ). (D) Funnel plot of the prior ischemic stroke ORs between groups, without 'Urta *et al*, 2014'(18) article, and very low heterogeneity ( $P=0.32$  and  $I^2=14\%$ ). Medical, medical management; OR, odds ratio.

