

Figure S1. (A) Forest plot for body mass index. The results demonstrated no statistically significant results (OR, 1.76; 95% CI, 0.55 to 5.67; P=0.34). (B) Funnel plot of the body mass index in the groups, demonstrating high heterogeneity (P=0.06 and I²=72%). The studies depicted are as follows: Luo *et al* (15) and Yang *et al* (16). I², the percentage of total variation across studies that is due to heterogeneity rather than chance; CI, confidence interval; P, P-value; OR, odds ratio.

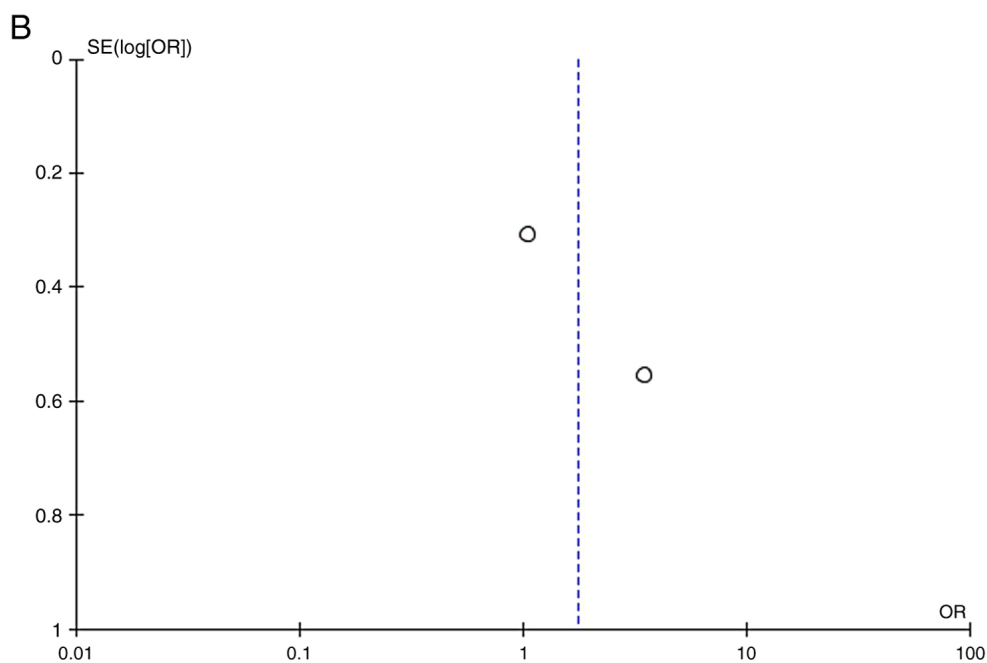
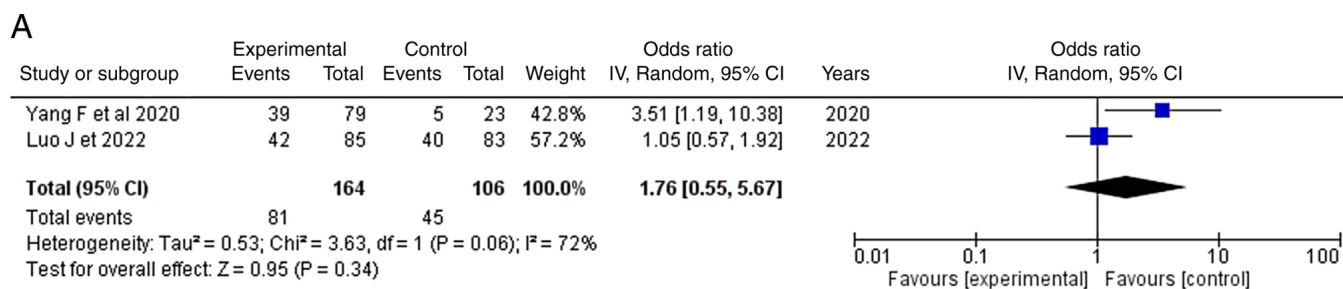


Figure S2. (A) Forest plot for smoking: The results demonstrated no statistically significant difference (OR, 1.57; 95% CI, 0.59 to 4.19; P=0.37). (B) Funnel plot of the same parameter, demonstrating high heterogeneity (P=0.12 and I²=60%). The studies depicted are as follows: Wu *et al* (14) and Yang *et al* (16). I², the percentage of total variation across studies that is due to heterogeneity rather than chance; CI, confidence interval; P, P-value; OR, odds ratio.

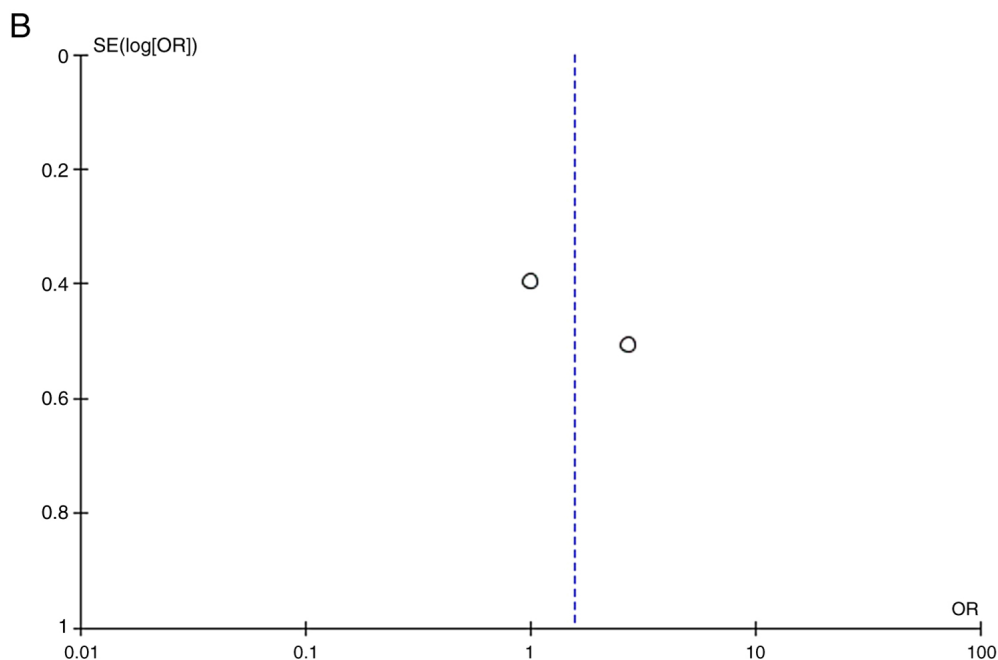
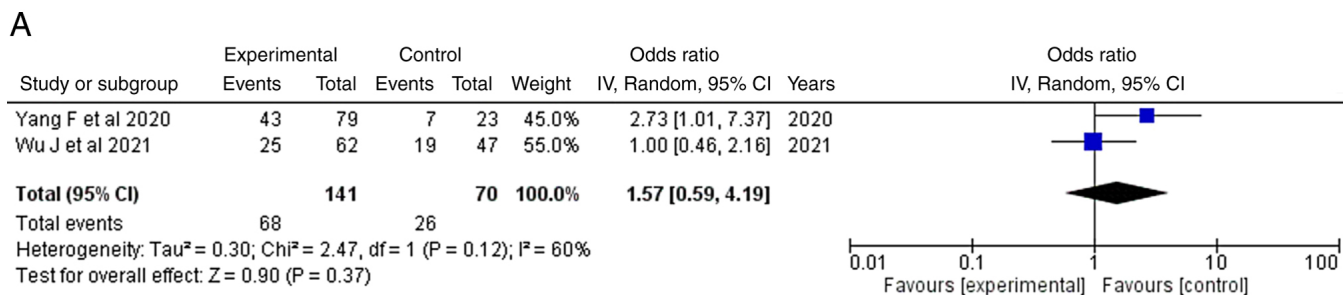


Figure S3. (A) Forest plot for anterior circulation. The Results demonstrated no statistically significant difference (OR, 9.99; 95% CI, 0.41 to 243.1; P=0.16). (B) Funnel plot of the same parameter, demonstrating high heterogeneity (P=0.03 and I²=79%). The studies depicted are as follows: Wu *et al* (14) and Yang *et al* (16). I², the percentage of total variation across studies that is due to heterogeneity rather than chance; CI, confidence interval; P, P-value; OR, odds ratio.

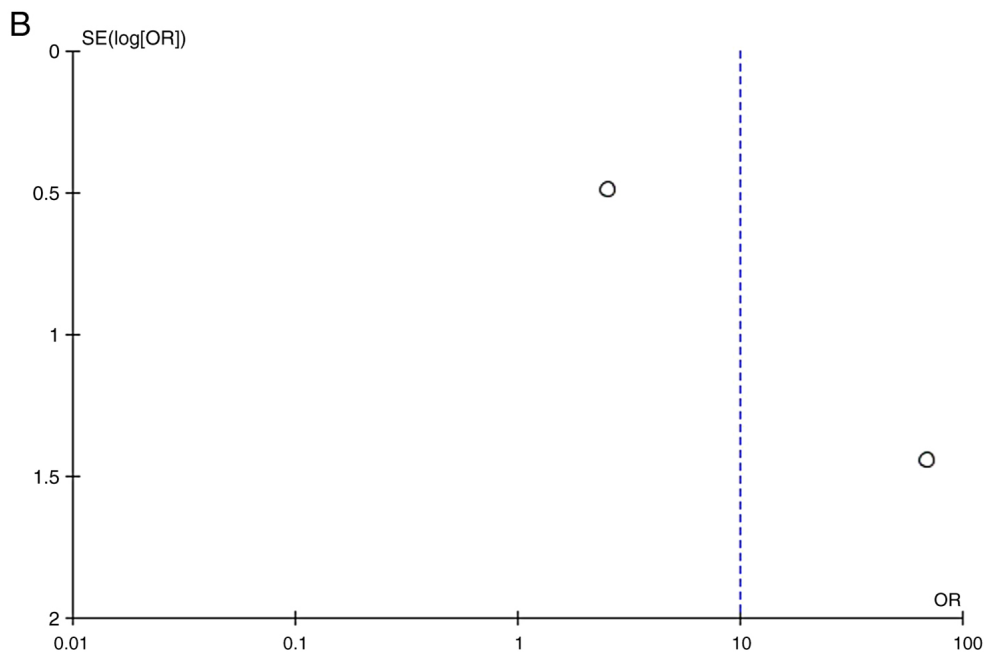
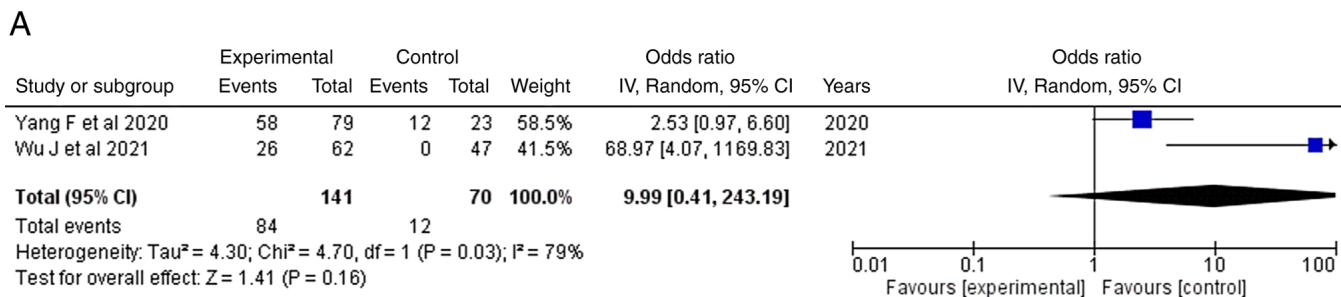


Figure S4. (A) Forest plot for posterior circulation. The results demonstrated no statistically significant difference (OR, 3.09; 95% CI, 0.04 to 256.6; P=0.62). (B) Funnel plot of the same parameter, demonstrating high heterogeneity (P=0.003 and I²=89%). The studies depicted are as follows: Wu *et al* (14) and Yang *et al* (16). I², the percentage of total variation across studies that is due to heterogeneity rather than chance; CI, confidence interval; P, P-value; OR, odds ratio.

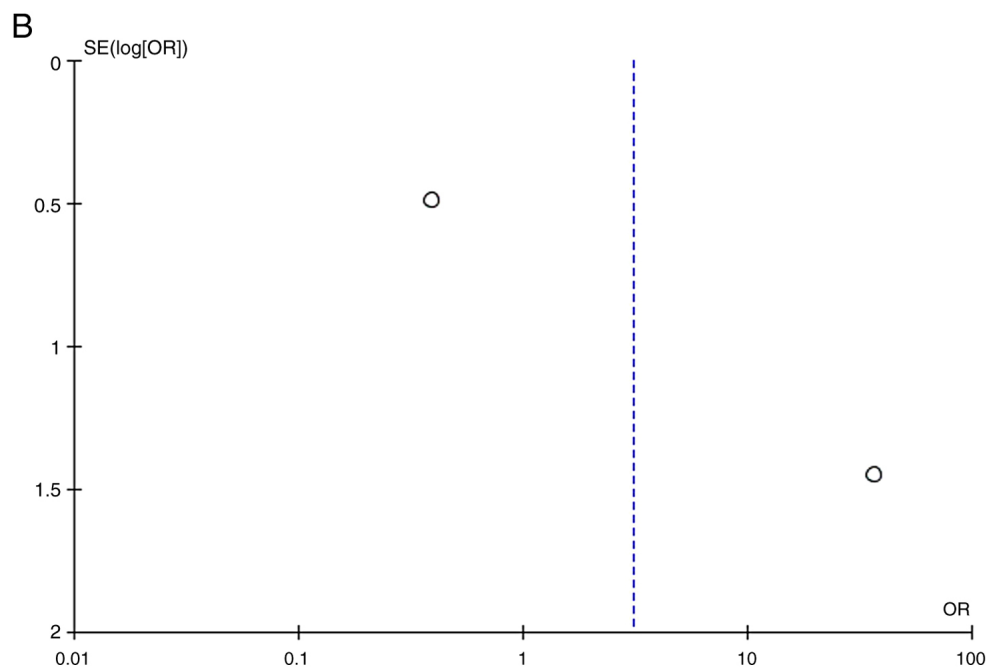
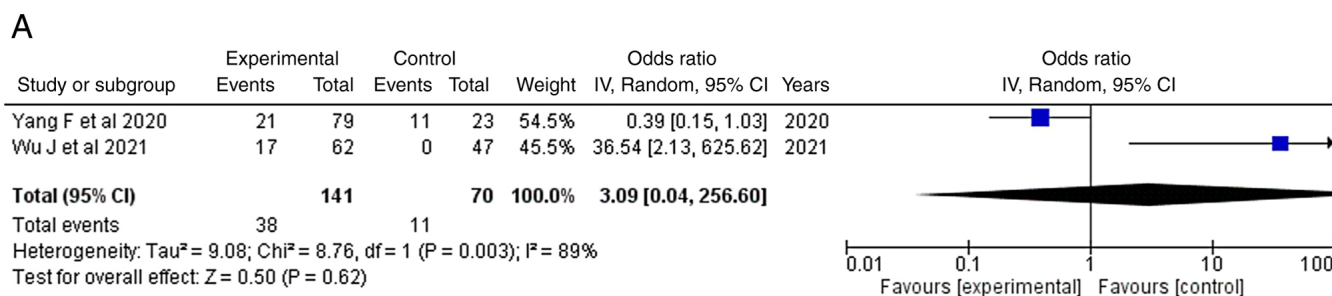


Figure S5. (A) Forest plot for an aneurism size <5 mm. The results demonstrated no statistically significant difference (OR, 5.03; 95% CI, 0.02 to 1310.1; P=0.57). (B) Funnel plot of the same parameter, demonstrating high heterogeneity (P<0.05 and I²=93%). The studies depicted are as follows: Wu *et al* (14) and Yang *et al* (16). I², the percentage of total variation across studies that is due to heterogeneity rather than chance; CI, confidence interval; P, P-value; OR, odds ratio.

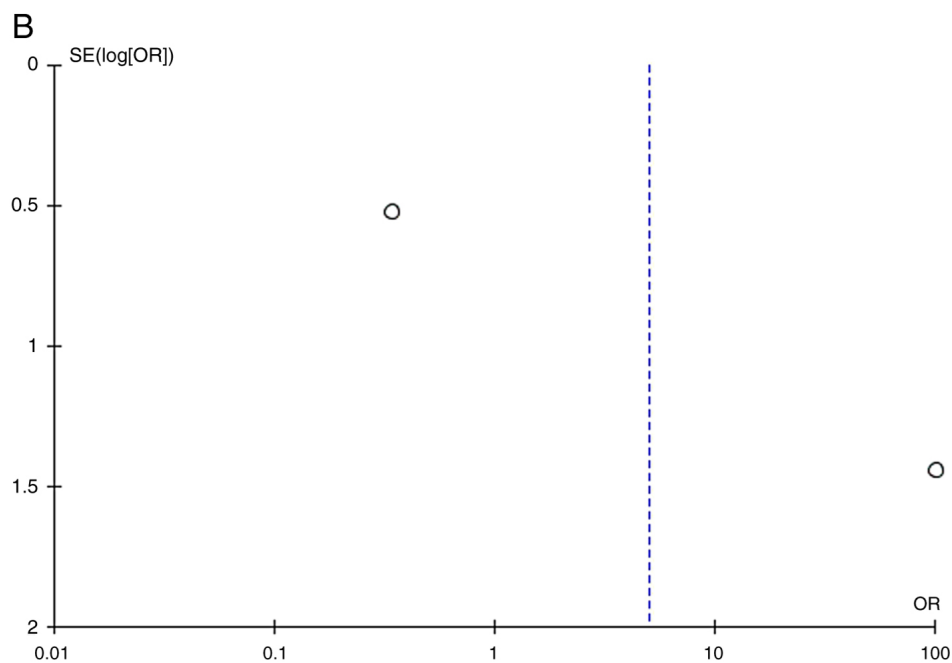
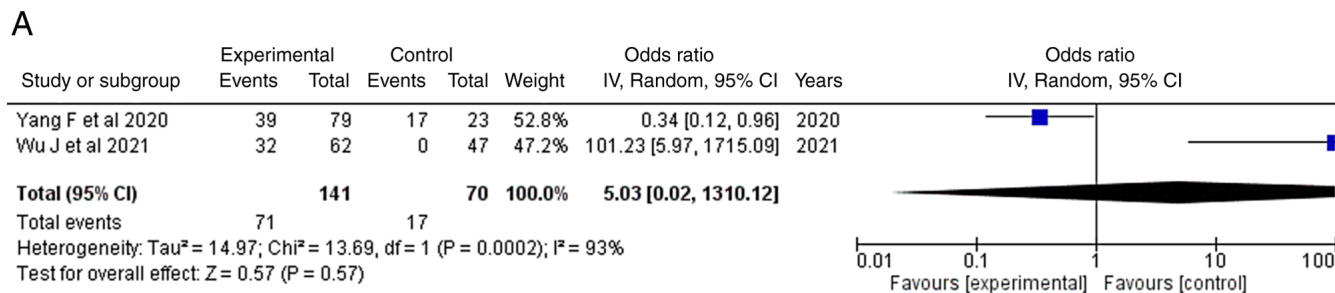


Figure S6. (A) Forest plot for an aneurism size 5-10 mm. The results demonstrated no statistically significant difference (OR, 9.11; 95% CI, 0.29-290.4; P=0.21). (B) Funnel plot of the same parameter, demonstrating high heterogeneity (P<0.05 and I²=81%). The studies depicted are as follows: Wu *et al* (14) and Yang *et al* (16). I², the percentage of total variation across studies that is due to heterogeneity rather than chance; CI, confidence interval; P, P-value; OR, odds ratio.

