

Figure S1. ORR of PD1/PD-L1 inhibitors vs. chemotherapy for advanced GC/GEJC (before sensitivity analysis). GC/GEJC, gastric or gastro-esophageal junction cancer patients; PD-1, programmed cell death 1; PD-L1, programmed cell death ligand 1; ORR, objective response rate; RR, ratio rate; CI, confidence interval.

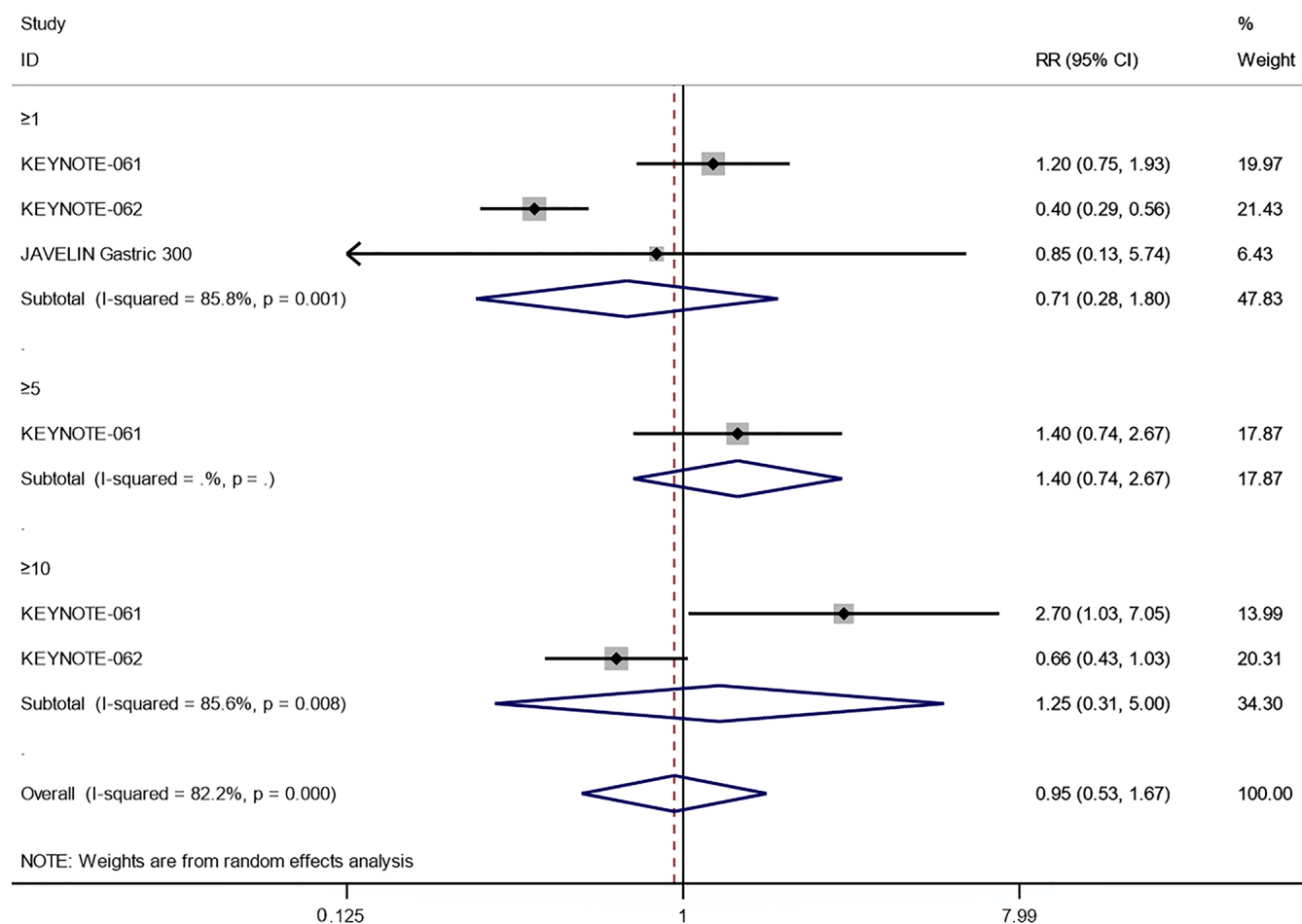


Figure S2. Sensitivity analysis of ORR of PD1/PD-L1 inhibitors vs. chemotherapy for patients with PD-L1 CPS \geq 1. GC/GEJC, gastric or gastro-esophageal junction cancer patients; PD-1, programmed cell death 1; PD-L1, programmed cell death ligand 1; CPS< combined positive score; ORR, objective response rate; CI, confidence interval.

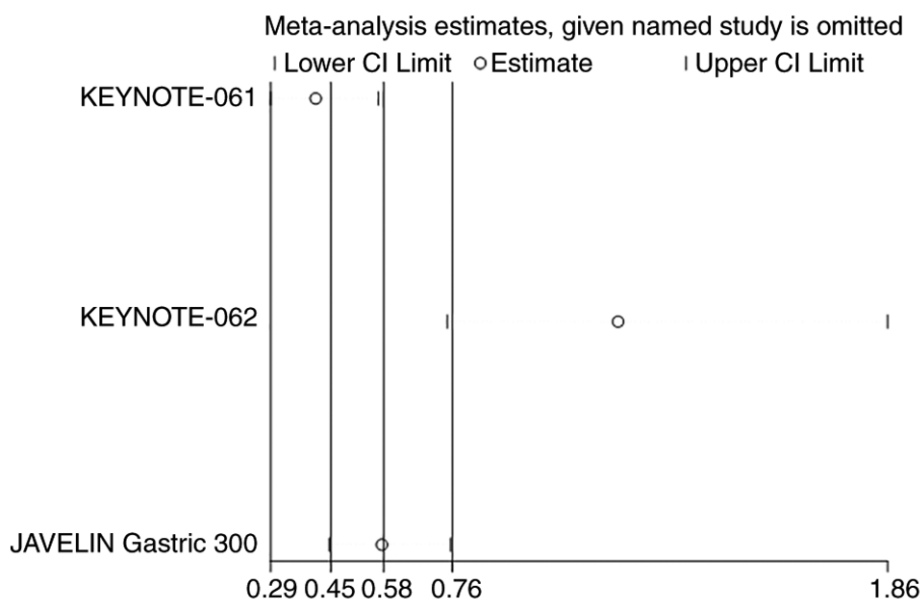


Figure S3. Sensitivity analysis of OS of PD1/PD-L1 inhibitors vs. chemotherapy for patients with PD-L1 CPS \geq 1. GC/GEJC, gastric or gastro-esophageal junction cancer patients; PD-1, programmed cell death 1; PD-L1, programmed cell death ligand 1; CPS< combined positive score; OS, overall survival.

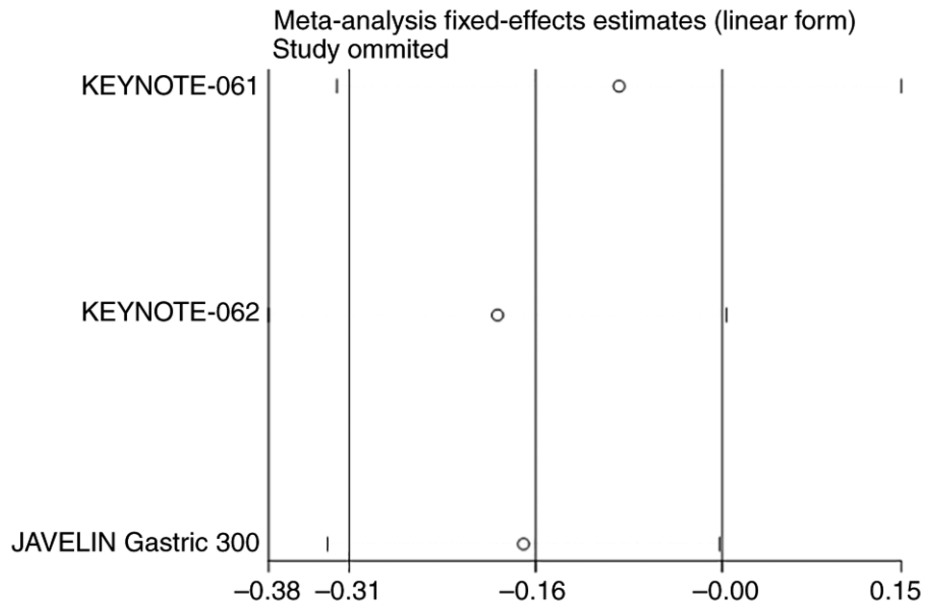


Figure S4. Sensitivity analysis of OS of PD1/PD-L1 inhibitors combined with chemotherapy vs. chemotherapy alone for patients with PD-L1 CPS \geq 1. GC/GEJC, gastric or gastro-esophageal junction cancer patients; PD-1, programmed cell death 1; PD-L1, programmed cell death ligand 1; CPS, combined positive score; OS, overall survival.

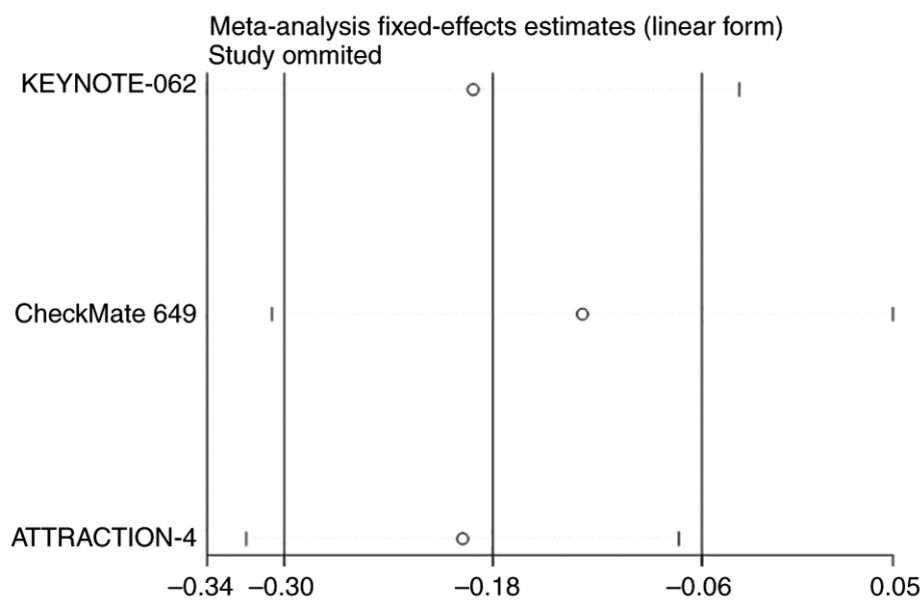


Figure S5. Sensitivity analysis of PFS of PD1/PD-L1 inhibitors vs. chemotherapy for patients with PD-L1 CPS \geq 1. GC/GEJC, gastric or gastro-esophageal junction cancer patients; PD-1, programmed cell death 1; PD-L1, programmed cell death ligand 1; CPS, combined positive score; PFS, progression free survival.

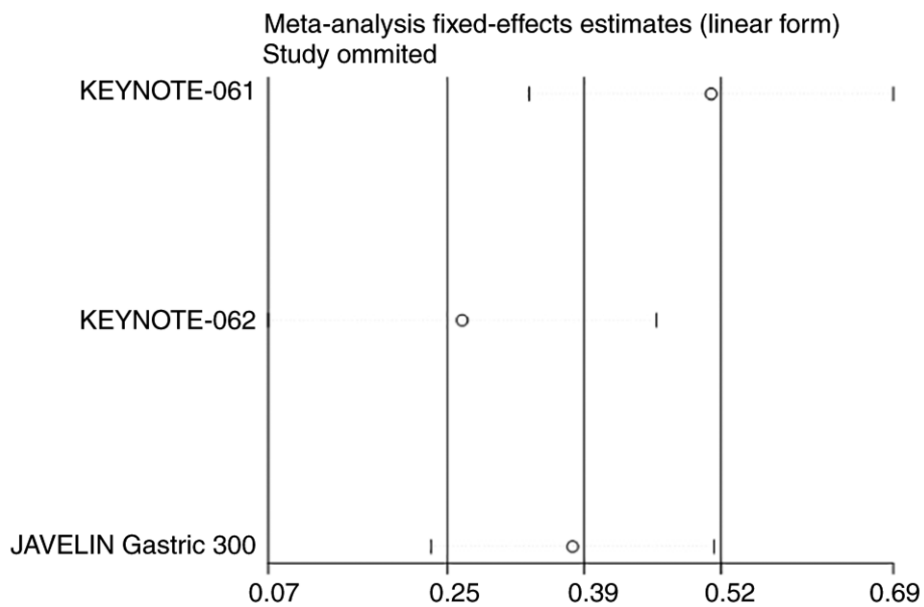


Figure S6. Sensitivity analysis of PFS of PD1/PD-L1 inhibitors combined with chemotherapy vs. chemotherapy alone for patients with PD-L1 CPS \geq 1. GC/GEJC, gastric or gastro-esophageal junction cancer patients; PD-1, programmed cell death 1; PD-L1, programmed cell death ligand 1; CPS, combined positive score; PFS, progression free survival.

