

Figure S1. Kaplan-Meier analysis demonstrates the association between *SLC17A9* expression levels and overall survival, disease-specific survival and progression-free survival in different cancer types from The Cancer Genome Atlas. *SLC17A9*, solute carrier family 17 member 9.

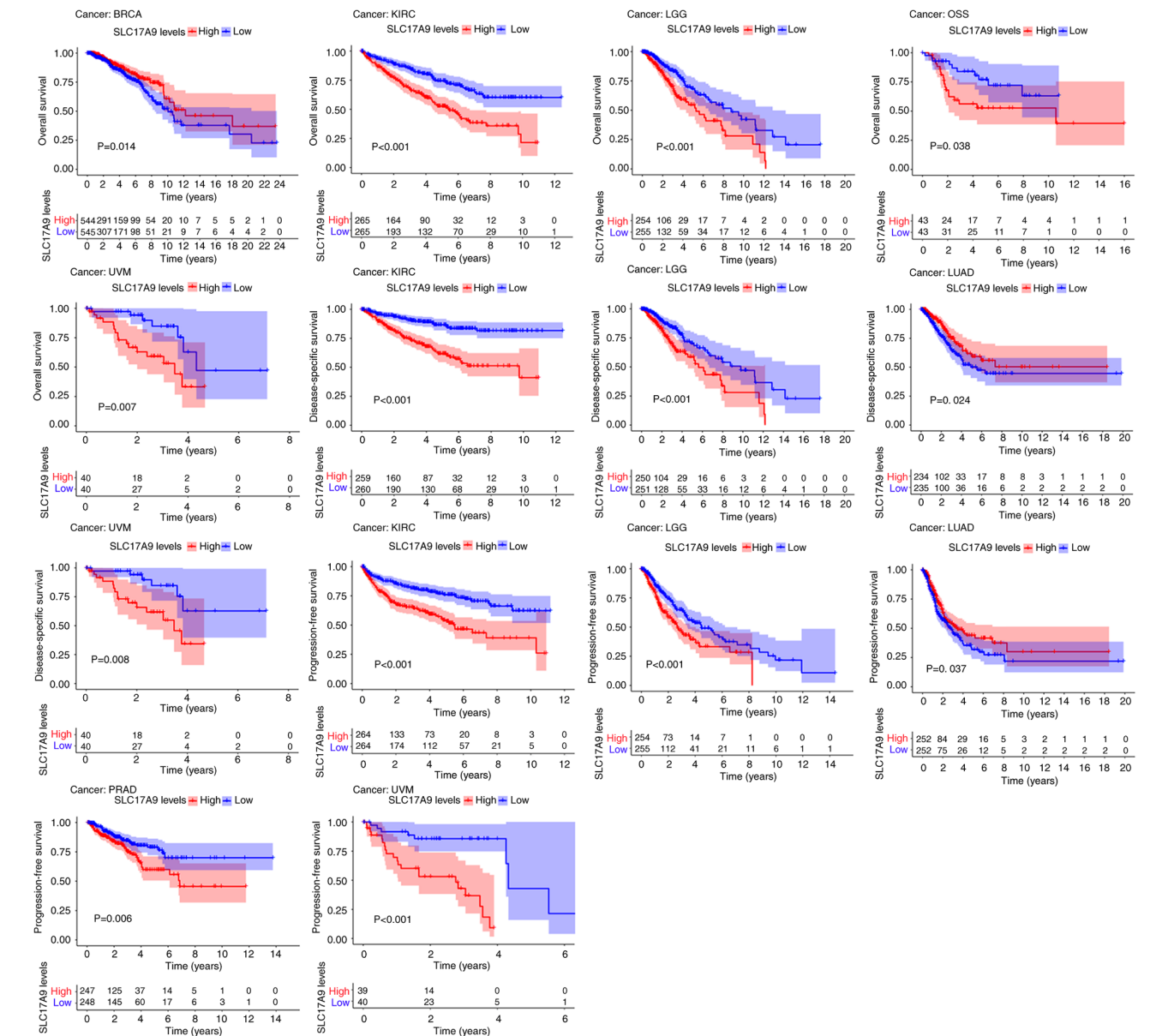


Figure S2. Association between *SLC17A9* expression levels and the prognosis of patients from the immunotherapy cohort using the Kaplan-Meier plotter web-based tool (<https://kmplot.com/analysis/>). (A) Association between *SLC17A9* expression levels and OS of patients in the anti-PD-L1 therapy cohort. (B) Association between *SLC17A9* expression levels and OS of patients with bladder carcinoma in the anti-PD-L1 therapy cohort. *SLC17A9*, solute carrier family 17 member 9; OS, overall survival; anti-PD-L1, antibody directed against programmed cell death-1 ligand 1; HR, hazard ratio.

